

Instrument Innovations!

New Injection Port Can Simplify Life in Your Laboratory

by Donna Lidgett, GC Accessories Product Marketing Manager

- No kinked or broken gas lines.
- Change inlet liners faster, easier, and eliminate touching hot surfaces.
- Excellent for Agilent 5890, 6850, or 6890 GCs; especially advantageous with Agilent GCs equipped with autosamplers.

EZ Twist Top™ Split/Splitless Injection Port for Agilent GCs

Injection port maintenance should be performed prior to installing any capillary column, and on a routine basis, based on the number of injections made and the cleanliness of the samples. For optimum system performance, the injection port liner must be free of sample residue, septum particles, and ferrule fragments, so proper maintenance includes replacing the injection port liner, critical seals, and septum. Peak shape degradation, poor reproducibility, sample decomposition, and ghost peaks all are associated with using a dirty liner. Frequent septum replacement prevents fragmentation and leaks. Multiple injections and continuous exposure to hot injection port surfaces will decompose the septum and can create particles that can fall into the injection port liner, where they become a potential source of ghost peaks, loss of inertness, and occluded carrier gas flow. Therefore, changing septum and inlet liners frequently is essential to maintaining optimum system performance.

Using Restek's new, unique EZ Twist Top™ Injection Port, and Restek Cool Tools (Septum Nut Removal Tool, cat. # 24918, and Inlet Liner Removal Tool, cat. # 20181—order separately), you can reduce maintenance time and frustration, and eliminate tangled gas lines and damage that leads to leaks, while avoiding direct contact with hot metal and glass surfaces.

The gas lines are attached to the EZ Twist Top™ Shell Weldment (bottom) instead of the weldment (top). Once the injection port is installed the gas lines are under the GC cover and do not interfere with routine injection port maintenance, as shown in Figure 1. To remove the weldment and access the liner, simply slip the Weldment Removal Tool (included in the complete injection port kit) over the weldment (Figure 2), twist, and remove the weldment. For speed and efficiency, the weldment stays secured in the tool until you are ready to reattach it. Changing inlet liners in original equipment injection ports was complicated by the gas lines and sampling tray. Our new injection port makes changing the liner a quick and simple task.

Figure 1



The old way: gas lines can be damaged during routine injection port maintenance.



The new way: with the EZ Twist Top™ Injection Port, the gas lines are under the GC cover and are not disturbed during maintenance.

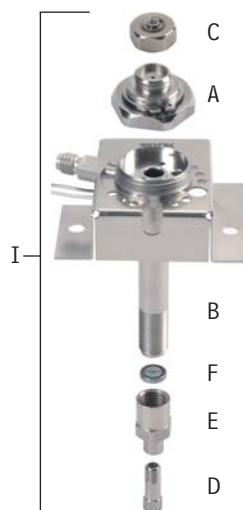
Figure 2



Simply slip the Weldment Removal Tool over the weldment, then twist and remove the weldment. For speed and efficiency, the weldment stays secured in the Weldment Removal Tool until you reattach it.

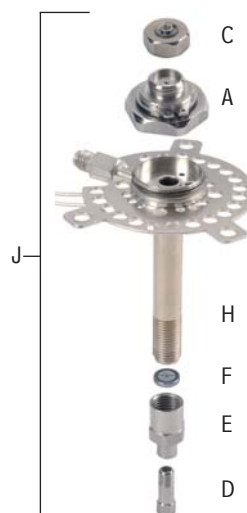
EZ Twist Top™ Split/Splitless Injection Port for Agilent 5890 GCs

Description	qty.	cat.#	price
I) Complete injection port assembly includes: split/splitless weldment, shell weldment, 2 weldment O-rings, Siltek® Dual Vespe!® Ring inlet seal, septum nut, reducing nut, stainless steel capillary nut and weldment tool	kit	22725	\$645
Siltek® complete injection port assembly includes: Siltek® split/splitless weldment, Siltek® shell weldment, 2 weldment O-rings, Siltek® Dual Vespe!® Ring inlet seal, septum nut, reducing nut, stainless steel capillary nut and weldment tool	kit	22726	\$695
A) Split/Splitless Weldment for Agilent 5890/6890/6850 GCs (2 weldment O-rings are installed on the weldment)	ea.	22724	\$165
Siltek® Split/Splitless Weldment for Agilent 5890/6890/6850 GCs (2 weldment O-rings are installed on the weldment)	ea.	22732	\$215
B) Shell Weldment for Agilent 5890 GCs	ea.	22727	\$375
Siltek® Shell Weldment for Agilent 5890 GCs	ea.	22731	\$425
Weldment O-rings	10-pk.	22729	\$5
C) Autosampler & PTV Septum Nut (for 23-gauge needles)	ea.	20631	\$30
D) Stainless Steel Capillary Column Nut (for use with standard 1/16" ferrules)	2-pk.	20883	\$27
E) Reducing Nut	ea.	22078	\$35
F) Siltek® 0.8mm ID Dual Vespe!® Ring Inlet Seal	2-pk.	21242	\$58
	10-pk.	21243	\$264
G) Weldment Removal Tool for Agilent 5890/6890/6850 GCs	ea.	22728	\$165



EZ Twist Top™ Split/Splitless Injection Port for Agilent 6890/6850 GCs

Description	qty.	cat.#	price
J) Complete injection port assembly includes: split/splitless weldment, shell weldment, 2 weldment O-rings, Siltek® Dual Vespe!® Ring inlet seal, septum nut, reducing nut, stainless steel capillary nut and weldment tool	kit	22721	\$695
Siltek® complete injection port assembly includes: Siltek® split/splitless weldment, Siltek® shell weldment, 2 weldment O-rings, Siltek® Dual Vespe!® Ring inlet seal, septum nut, reducing nut, stainless steel capillary nut and weldment tool	kit	22722	\$745
A) Split/Splitless Weldment for Agilent 5890/6890/6850 GCs (2 weldment O-rings are installed on the weldment)	ea.	22724	\$165
Siltek® Split/Splitless Weldment for Agilent 5890/6890/6850 GCs (2 weldment O-rings are installed on the weldment)	ea.	22732	\$215
H) Shell Weldment for Agilent 6890/6850 GCs	ea.	22723	\$405
Siltek® Shell Weldment for Agilent 6890/6850 GCs	ea.	22730	\$455
Weldment O-rings	10-pk.	22729	\$5
C) Autosampler & PTV Septum Nut (for 23-gauge needles)	ea.	20631	\$30
D) Stainless Steel Capillary Column Nut (for use with standard 1/16" ferrules)	2-pk.	20883	\$27
E) Reducing Nut	ea.	22078	\$35
F) Siltek® 0.8mm ID Dual Vespe!® Ring Inlet Seal	2-pk.	21242	\$58
	10-pk.	21243	\$264
G) Weldment Removal Tool for Agilent 5890/6890/6850 GCs	ea.	22728	\$165



EZ Twist Top™ Split/Splitless Injection Port with Optional Split Vent for Agilent 6890/6850 GCs

Description	qty.	cat.#	price
Complete injection port assembly includes: split/splitless weldment, shell weldment, 2 weldment O-rings, Siltek® Dual Vespe!® Ring inlet seal, septum nut, reducing nut, stainless steel capillary nut and weldment tool	kit	22735	\$785
Siltek® complete injection port assembly includes: Siltek® split/splitless weldment, Siltek® shell weldment, 2 weldment O-rings, Siltek® Dual Vespe!® Ring inlet seal, septum nut, reducing nut, stainless steel capillary nut and weldment tool	kit	22736	\$835
Optional Split/Splitless Shell Weldment (for use with large canister type filter)	ea.	22733	\$495
Siltek® Optional Split/Splitless Shell Weldment (for use with large canister type filter)	ea.	22734	\$545

