

20% DISCOUNT

on any stock Rxi™-1ms, Rxi™-5ms, Rxi™-17 or Rxi™-50

Rxi™ Columns

Unsurpassed
inertness



Ultra-low bleed



Guaranteed
reproducibility



Unmatched
performance



HRMalytic **RESTEK** '07
Australian Distributors **ECH**nology
Tel: 03 9762 2034 Fax: 03 9761 1169 www.chromtech.net.au info@chromtech.net.au

RESTEK

Chromatography Products

www.restek.com

Rxi™-1ms Fused Silica Columns

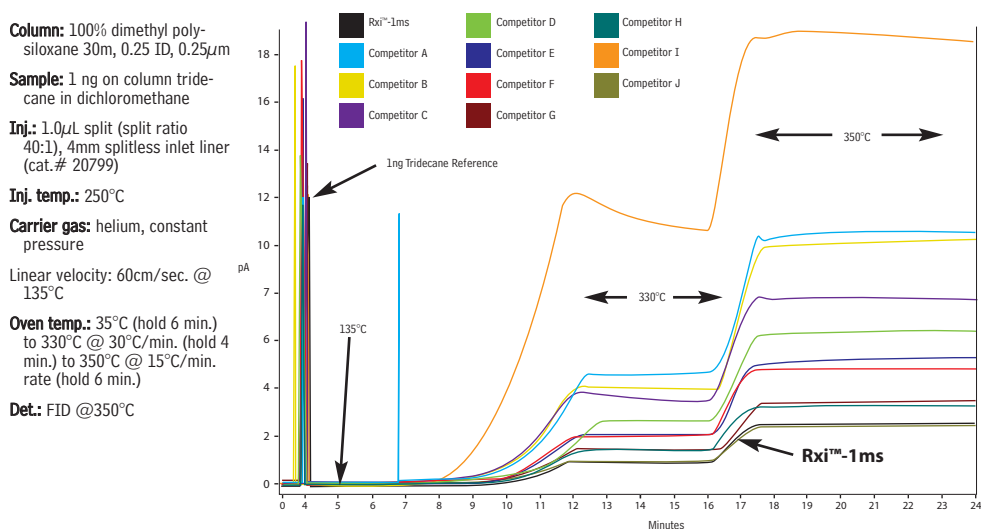
Restek's Exceptionally Inert (Rxi™) Fused Silica Capillary Columns

- Stable at high temperatures; improved signal to noise ratios.
- Excellent inertness for acids and bases; predictable column performance.
- Engineered to assure column-to-column reproducibility.

The combination of ultra-low bleed and unsurpassed inertness make the Rxi™-1ms the best column choice for analyses using a 100% polydimethyl siloxane stationary phase.

We compared the bleed profiles of ten competitor columns at both 330°C and 350°C to the Rxi™-1ms column. At both temperatures the Rxi™-1ms column exhibits the lowest bleed level or equivalent of all the columns tested.

Figure 1 The Rxi™-1ms column has the lowest bleed available, allowing better accuracy and lower detection limits for active compounds.



Columns included in the comparison are BP-1, DB-1, DB-1ms, EQ-1, HP-1, HP-1ms, Rtx-1, **Rxi-1ms**, VF-1ms, ZB-1, and ZB-1ms. The bleed profiles in Figure 1 are labeled randomly.

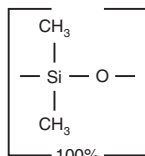
20% OFF

Rxi™-1ms (nonpolar phase, Crossbond® 100% dimethyl polysiloxane)

- General purpose columns for drugs of abuse, essential oils, hydrocarbons, pesticides, PCB congeners or (e.g.) Aroclor® mixes, sulfur compounds, amines, solvent impurities, simulated distillation, oxygenates, gasoline range organics (GRO), refinery gases.
- Ultra-low bleed – improved signal to noise ratio, for better sensitivity and mass spectral integrity.
- Equivalent to USP G2 phase.

similar phases

DB-1, DB-1ms, HP-1, HP-1ms, Ultra-1, SPB-1, Equity-1



ID	df (µm)	temp. limits	15-Meter	30-Meter	60-Meter
0.25mm	0.25	-60 to 330/350°C	13320-R25	13323-R25	13326-R25
	0.50	-60 to 330/350°C	13335-R25	13338-R25	13341-R25
	1.00	-60 to 330/350°C	13350-R25	13353-R25	13356-R25
0.32mm	0.25	-60 to 330/350°C	13321-R25	13324-R25	13327-R25
	0.50	-60 to 330/350°C	13336-R25	13339-R25	13342-R25
	1.00	-60 to 330/350°C	13351-R25	13354-R25	13357-R25
0.53mm	0.50	-60 to 330/350°C		13396-R25	
	1.00	-60 to 330/350°C	13337-R25	13340-R25	
	1.50	-60 to 330/350°C	13352-R25	13355-R25	
0.18mm	0.18	-60 to 330/350°C	13367-R25	13370-R25	13373-R25
	0.20mm	0.18	-60 to 330/350°C	13397-R25	
	0.20mm	0.33	-60 to 330/350°C		13302-R25
					13399-R25

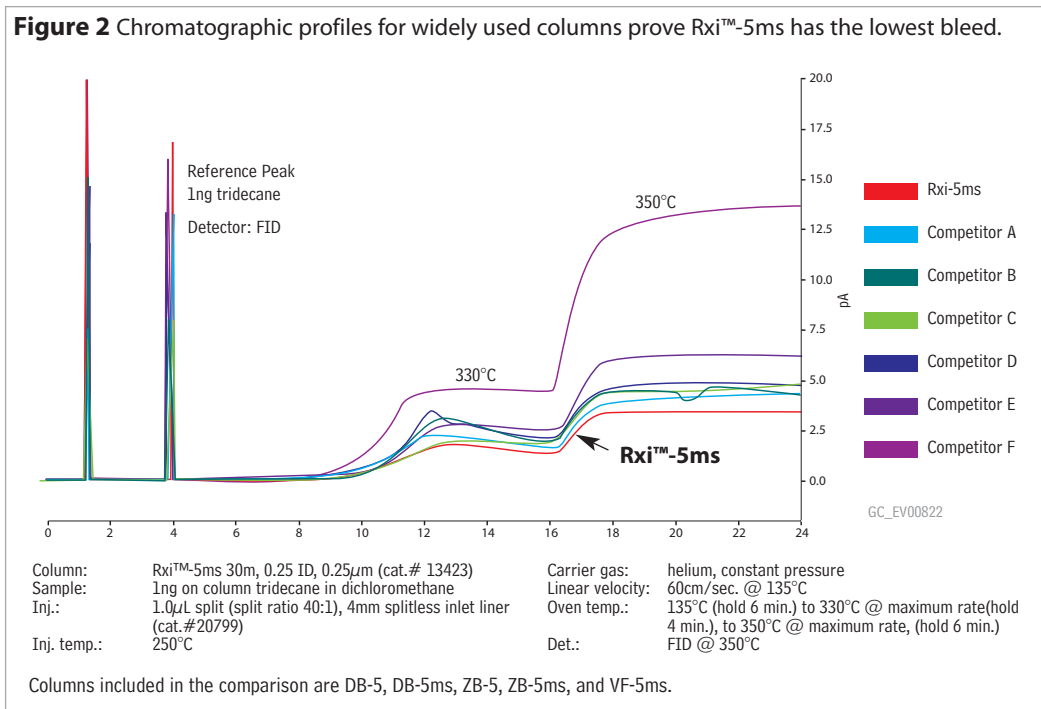
Rxi™-5ms Fused Silica Columns

Restek's Exceptionally Inert (Rxi™) Fused Silica Capillary Columns

- Unsurpassed inertness for low level basic and acidic compounds.
- Ultra-low bleed
- Reliable performance, guaranteed column-to-column reproducibility
- Guaranteed to work perfectly with retention time-locking software.

Ultra Low Bleed

Bleed from Rxi™-5ms columns is negligible, simplifying trace-level GC/MS analysis or detection by electron capture (ECD), nitrogen-phosphorus (NPD), or other sensitive methods. The graph below shows the bleed from 30m x 0.25mm, 0.25µm film columns. Compared to the other columns, including silarylene type phases, the Rxi™-5ms column exhibits the lowest bleed.



Rxi™-5ms (low-polarity phase, Crossbond® 5% diphenyl / 95% dimethyl polysiloxane)

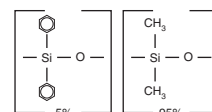
- General purpose columns for semivolatiles, phenols, amines, residual solvents, drugs of abuse, pesticides, PCB congeners or (e.g.) Aroclor® mixes, solvent impurities.
- Equivalent to USP G27 phase.

ID	df (µm)	temp. limits	15-Meter	30-Meter	60-Meter	
0.25mm	0.25	-60 to 330/350°C	13420-R25	13423-R25	13426-R25	
	0.40	-60 to 330/350°C		13481-R25		
	0.50	-60 to 330/350°C	13435-R25	13438-R25	13441-R25	
	1.00	-60 to 330/350°C	13450-R25	13453-R25	13456-R25	
0.32mm	0.25	-60 to 330/350°C	13421-R25	13424-R25	13427-R25	
	0.50	-60 to 330/350°C	13436-R25	13439-R25	13442-R25	
	1.00	-60 to 330/350°C	13451-R25	13454-R25	13457-R25	
0.53mm	0.25	-60 to 330/350°C	13422-R25	13425-R25		
	0.50	-60 to 330/350°C	13437-R25	13440-R25		
	1.00	-60 to 330/350°C	13452-R25	13455-R25		
	1.50	-60 to 330/350°C	13467-R25	13470-R25		
ID	df (µm)	temp. limits	12-Meter	20-Meter	25-Meter	50-Meter
0.18mm	0.18	-60 to 330/350°C		13402-R25		
	0.30	-60 to 330/350°C		13409-R25		
	0.36	-60 to 330/350°C		13411-R25		
0.20mm	0.33	-60 to 330/350°C	13497-R25		13498-R25	13499-R25

20% OFF

similar phases

DB-5, HP-5, HP-5ms, Ultra-2, SPB-5, Equity-5



20% DISCOUNT

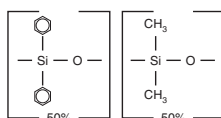
on any stock Rxi™-1ms, Rxi™-5ms, Rxi™-17 or Rxi™-50

Rxi™-17 (mid-polarity phase; Crossbond® 50% diphenyl / 50% dimethyl polysiloxane)

- General purpose columns for pesticides, herbicides, rosin acids, phthalate esters, triglycerides, sterols.

similar phases

DB-17, DB-608



ID	df (µm)	temp. limits	15-Meter	30-Meter
0.25mm	0.25	40 to 280/300°C	13520-R25	13523-R25
	0.50	40 to 280/300°C	13535-R25	13538-R25
	1.00	40 to 280/300°C	13550-R25	13553-R25
0.32mm	0.25	40 to 280/300°C	13521-R25	13524-R25
	0.50	40 to 280/300°C	13536-R25	13539-R25
	1.00	40 to 280/300°C	13551-R25	13554-R25
0.53mm	0.25	40 to 280/300°C	13522-R25	13525-R25
	0.50	40 to 280/300°C	13537-R25	13540-R25
	0.83	40 to 280/300°C		13569-R25
	1.00	40 to 280/300°C	13552-R25	13555-R25
	1.50	40 to 280/300°C	13567-R25	13570-R25

Rxi™-50 (mid-polarity phase; Crossbond® 100% methylphenyl polysiloxane)

- General purpose columns for pesticides, herbicides, rosin acids, phthalate esters, triglycerides, sterols.
- Temperature range: 0°C to 320°C.
- Equivalent to USP G3 phase.

The high thermal stability of Rxi™-50 columns makes dual-column analysis with common phases such as Rxi™-1ms or Rxi™-5ms possible. Between analyses, high temperatures can be used to drive less volatile contaminants off of the column.

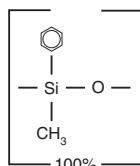
ID	df (µm)	temp. limits*	15-Meter	30-Meter	60-Meter
0.25mm	0.10	0 to 300/320°C	10505-R25	10508-R25	
	0.25	0 to 300/320°C	10520-R25	10523-R25	10526-R25
	0.50	0 to 290/310°C	10535-R25	10538-R25	10541-R25
	1.00	0 to 280/300°C	10550-R25	10553-R25	10556-R25
0.32mm	0.10	0 to 300/320°C	10506-R25	10509-R25	
	0.25	0 to 300/320°C	10521-R25	10524-R25	10527-R25
	0.50	0 to 290/310°C	10536-R25	10539-R25	10542-R25
	1.00	0 to 280/300°C	10551-R25	10554-R25	10557-R25
0.53mm	0.25	0 to 280/300°C	10522-R25		
	0.50	0 to 270/290°C	10537-R25	10540-R25	10543-R25
	0.83	0 to 270/290°C		10569-R25	
	1.00	0 to 260/280°C	10552-R25	10555-R25	10558-R25
	1.50	0 to 250/270°C	10567-R25	10570-R25	10573-R25
ID	df (µm)	temp. limits	10-Meter	20-Meter	40-Meter
0.18mm	0.20	0 to 310/330°C	40501-R25	40502-R25	40503-R25
	0.40	0 to 300/320°C	40510-R25	40511-R25	40512-R25

Restek Trademarks: Crossbond, Rtx, Rxi, Restek logo. For other trademark attributions, please refer to our catalog.



similar phases

HP-50



Offer cannot be combined with any other promotion or discount. **Expires October 31, 2007**