



# New Pinnacle™ DB HPLC Columns

Superior Performance for Basic Compounds

**HROMalytic** +61(0)3 9762 2034  
**ECHnology** Pty Ltd

**Australian Distributors**  
Importers & Manufacturers  
[www.chromtech.net.au](http://www.chromtech.net.au)

Website NEW : [www.chromalytic.com.au](http://www.chromalytic.com.au) E-mail : [info@chromtech.net.au](mailto:info@chromtech.net.au) Tel: 03 9762 2034 . . . in AUSTRALIA



# Pinnacle™ DB HPLC Columns

Superior Performance for Basic Compounds

- ✓ Sharp, symmetrical peaks for basic analytes.
- ✓ Silica manufactured by Restek, for total control of product quality.
- ✓ Narrow bore through preparative-scale formats.

Restek is among the few HPLC column manufacturers who manufacture silica. We believe that to truly control HPLC variables, a manufacturer must control the entire column manufacturing process, beginning at the initial step — making well-characterized, consistently-performing silica.

We are pleased to introduce a new line of HPLC columns, Pinnacle™ DB columns, prepared from our newest silica support. Pinnacle™ DB silica is a highly base-deactivated silica, suitable for a wide range of challenging applications. It has ideal performance characteristics for analyses of basic compounds or basic compounds mixed with other analytes. Our unique manufacturing process enables Pinnacle™ DB silica to resolve and elute basic compounds, such as many pharmaceuticals, without severe peak tailing, and with minimal or no need for mobile phase modifiers.

Column manufacturers often use a pyridine/phenol test mix to demonstrate a column's separation capabilities and indicate the peak shape that can be anticipated

**Figure A** Pyridine/Phenol Test Mix on Pinnacle™ DB C18

Peak List:	Ret. Time (min.)	Conc.
1. uracil	1.643	5.0µg/mL
2. pyridine	3.119	0.1µL/mL
3. phenol	6.969	1.86mg/mL

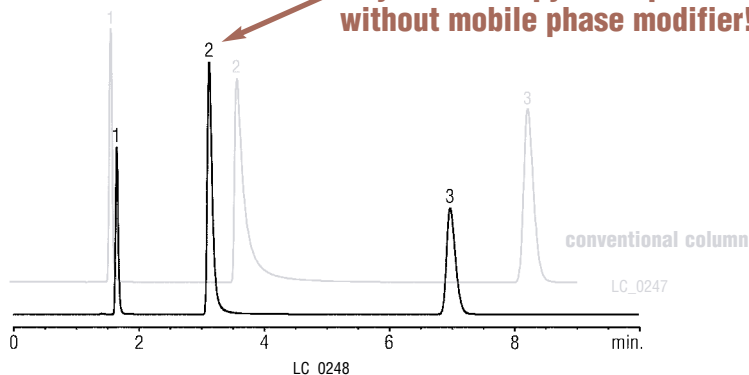
**Sample:**  
Inj.: 5.0µL  
Sample Diluent: mobile phase

**Column:** Pinnacle™ DB C18  
Catalog #: 9414565  
Dimensions: 150 x 4.6mm  
Particle Size: 5µm  
Pore Size: 140Å

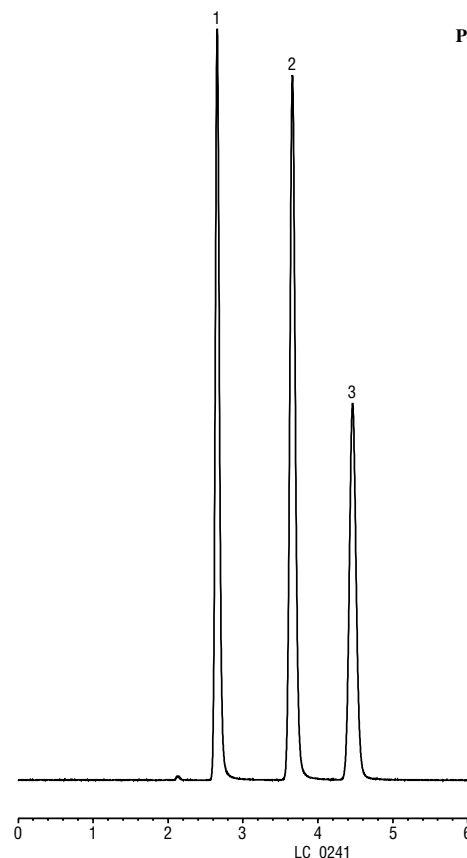
**Conditions:**  
Mobile Phase: A: 20mM potassium phosphate, pH 7.0  
B: acetonitrile  
Isocratic: 80%A:20%B

Flow: 1.0mL/min  
Temp.: ambient  
Det.: UV @ 254nm

**Excellent resolution and sharp, symmetrical pyridine peak - without mobile phase modifier!**



**Figure B** Xanthenes



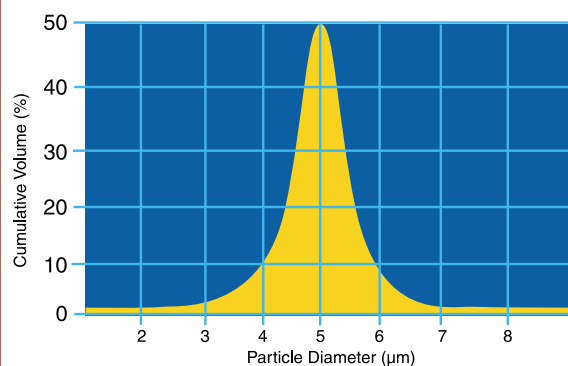
for basic compounds. Figure A shows pyridine/phenol separations from a Pinnacle™ DB C18 and a conventional C18 column. The sharp, symmetric peaks from the Pinnacle™ DB C18 column - without a mobile phase modifier - are what you can expect for many pharmaceutical or other basic analytes. In addition to the monomeric C18 bonded phase, the Pinnacle™ DB column line currently includes a C8 and a cyano bonded phase, and bare silica. Each of the bonded phases is endcapped.

Figure B shows an array of related basic pharmaceutical compounds analyzed on a Pinnacle™ DB C18 column. Note the consistent peak symmetry for these analytes. Often, neutral or acidic compounds complicate analyses of basic pharmaceuticals, as impurities or degradation products. Pinnacle™ DB columns are equally well suited to these challenges.

To ensure the high quality and the reliability that are characteristic of Restek HPLC columns, we established demanding quality control procedures to ensure each Pinnacle™ DB column will perform as described. Figure C is an example analysis of the test mix we use to individually quality check every column.

The Pinnacle™ DB line is available in a wide range of column dimensions, from 1mm narrow bore columns through 50mm preparative-scale columns. If you need sharp, consistent analyses for basic analytes, or bases mixed with acidic or neutral analytes, Pinnacle™ DB columns will more than meet your expectations. For additional information about this new column line please call our Technical Service Team, or, to place an order, call our Customer Service representatives.

Pinnacle DB™ silica features narrow particle distribution, ensuring sharper peaks and greater efficiency for the most demanding applications.



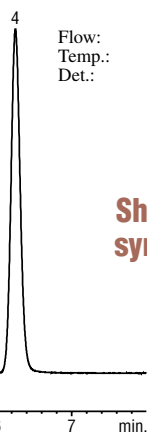
### on Pinnacle™ DB C18

Peak List:	Ret. Time (min.)	Conc.
1. theobromine	2.7	225µg/mL
2. theophylline	3.7	418µg/mL
3. β-hydroxyethyltheophylline	4.6	418µg/mL
4. caffeine	6.25	400µg/mL

**Sample:**  
Inj.: 2µL  
Sample Diluent: mobile phase

**Column:** Pinnacle™ DB C18  
Catalog #: 9414565  
Dimensions: 150 x 4.6 mm  
Particle Size: 5µm  
Pore Size: 140Å

**Conditions:**  
Mobile Phase: A: 20 mmolar KH<sub>2</sub>PO<sub>4</sub> buffer, pH 3.0  
B: acetonitrile  
Isocratic: 90%A:10%B  
Flow: 1.0 mL/min  
Temp.: 27°C  
Det.: UV @ 254nm



**Sharp, consistently symmetrical peaks.**

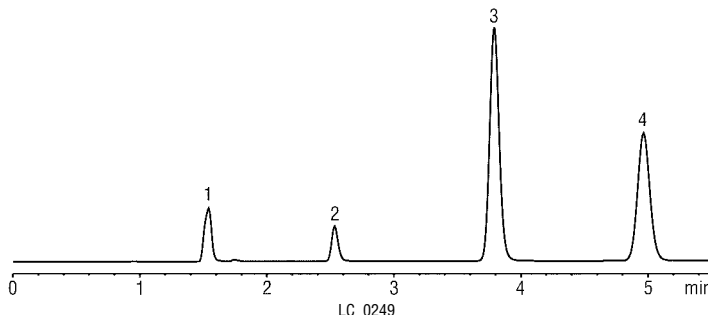
### Figure C Reversed Phase Test Mix on Pinnacle™ DB C18

Peak List:	Conc.
1. uracil	0.02mg/mL
2. benzene	3.0mg/mL
3. naphthalene	0.5mg/mL
4. biphenyl	0.06mg/mL

**Sample:** Reversed Phase Test Mix  
Inj.: 5µL  
Sample Diluent: methanol:water (75:25 v/v)

**Column:** Pinnacle™ DB C18  
Catalog #: 9414565  
Dimensions: 150 x 4.6mm  
Particle Size: 5µm  
Pore Size: 140Å

**Conditions:**  
Mobile Phase: A: water  
B: methanol  
Isocratic: 20%A:80%B  
Run Time: 8 min.  
Flow: 1.0mL/min  
Temp.: ambient  
Det.: UV @ 254nm



**Every column tested to ensure proper peak symmetry and theoretical plate expectations.**

## Pinnacle™ DB C18 5µm Columns (USP L1)

### Physical Characteristics:

particle: 5µm spherical      endcap: yes  
pore size: 140Å              pH: 2.5 - 7.5  
carbon load: 11%            temperature limit: 80°C



### Chromatographic Properties:

Highly base-deactivated spherical silica manufactured by Restek Corp. Monomeric C18 bonding.

Hydrophobic C18 phase suitable for analyses of a wide range of compounds, from acidic through slightly basic. Replaces Hypersil® BDS C18.

Length	1.0mm ID		2.1mm ID		3.2mm ID		4.6mm ID	
	cat.#	cat.#	cat.#	cat.#	cat.#	cat.#	cat.#	
30mm	9414531	9414532	9414533	9414534	9414535	9414536	9414537	
50mm	9414551	9414552	9414553	9414554	9414555	9414556	9414557	
100mm	9414511	9414512	9414513	9414514	9414515	9414516	9414517	
150mm	9414561	9414562	9414563	9414564	9414565	9414566	9414567	
200mm	9414521	9414522	9414523	9414524	9414525	9414526	9414527	
250mm	9414571	9414572	9414573	9414574	9414575	9414576	9414577	

## Pinnacle™ DB C8 5µm Columns (USP L7)

### Physical Characteristics:

particle: 5µm spherical      endcap: yes  
pore size: 140Å              pH: 2.5 - 7.5  
carbon load: 6%              temperature limit: 80°C



### Chromatographic Properties:

Highly base-deactivated spherical silica manufactured by Restek Corp. Monomeric C8 bonding. Similar to Pinnacle™ DB C18, but the shorter alkyl chain provides less hydrophobic retention.

Applications similar to Pinnacle™ DB C18, but with less hydrophobic retention. Less retention can be useful for shortening analysis time, if resolution is adequate. Replaces Hypersil® BDS C8.

Length	1.0mm ID		2.1mm ID		3.2mm ID		4.6mm ID	
	cat.#	cat.#	cat.#	cat.#	cat.#	cat.#	cat.#	
30mm	9413531	9413532	9413533	9413534	9413535	9413536	9413537	
50mm	9413551	9413552	9413553	9413554	9413555	9413556	9413557	
100mm	9413511	9413512	9413513	9413514	9413515	9413516	9413517	
150mm	9413561	9413562	9413563	9413564	9413565	9413566	9413567	
200mm	9413521	9413522	9413523	9413524	9413525	9413526	9413527	
250mm	9413571	9413572	9413573	9413574	9413575	9413576	9413577	

## Pinnacle™ DB Cyano 5µm Columns (USP L10)

### Physical Characteristics:

particle: 5µm spherical      endcap: yes  
pore size: 140Å              pH: 2.5 - 7.5  
carbon load: 4%              temperature limit: 80°C



### Chromatographic Properties:

Highly base-deactivated spherical silica manufactured by Restek Corp. Cyano bonding.

Suitable for analyses of a wide range of compounds, from acidic through slightly basic. Also useful for confirmation of analyses on a C18 or C8 column. Can be used in normal phase or reversed phase mode of separation. Replaces Hypersil® BDS Cyano.

Length	1.0mm ID		2.1mm ID		3.2mm ID		4.6mm ID	
	cat.#	cat.#	cat.#	cat.#	cat.#	cat.#	cat.#	
30mm	9416531	9416532	9416533	9416534	9416535	9416536	9416537	
50mm	9416551	9416552	9416553	9416554	9416555	9416556	9416557	
100mm	9416511	9416512	9416513	9416514	9416515	9416516	9416517	
150mm	9416561	9416562	9416563	9416564	9416565	9416566	9416567	
200mm	9416521	9416522	9416523	9416524	9416525	9416526	9416527	
250mm	9416571	9416572	9416573	9416574	9416575	9416576	9416577	

## Pinnacle™ DB Silica 5µm Columns (USP L3)

### Physical Characteristics:

particle: 5µm spherical      pore size: 140Å  
pH: 2.5 - 7.5                  temperature limit: 80°C



### Chromatographic Properties:

Highly base-deactivated spherical silica manufactured by Restek Corp. Normal phase mode of separation. Replaces Hypersil® BDS.

Length	1.0mm ID		2.1mm ID		3.2mm ID		4.6mm ID	
	cat.#	cat.#	cat.#	cat.#	cat.#	cat.#	cat.#	
30mm	9410531	9410532	9410533	9410534	9410535	9410536	9410537	
50mm	9410551	9410552	9410553	9410554	9410555	9410556	9410557	
100mm	9410511	9410512	9410513	9410514	9410515	9410516	9410517	
150mm	9410561	9410562	9410563	9410564	9410565	9410566	9410567	
200mm	9410521	9410522	9410523	9410524	9410525	9410526	9410527	
250mm	9410571	9410572	9410573	9410574	9410575	9410576	9410577	

To order a 2.1mm, 3.2mm, or 4.6mm column with a Trident™ Integral Inlet Fitting, add "-700" to the catalog number for the column.

Example: 100mm x 4.6mm ID Pinnacle™ DB C18 column with Trident™ Integral Inlet Fitting: 9414515-700

Nominal additional charge

For guard cartridges for these columns, see our catalog.

Restek Trademarks: Pinnacle, Restek logo.

Other trademarks: Hypersil (Hypersil, Life Sciences International Co.)

Lit. Cat.# 59499

**RESTEK**  
Restek Corporation

**HRMalytic** +61(0)3 9762 2034  
**ECH**nology Pty Ltd

**Australian Distributors**  
Importers & Manufacturers  
www.chromtech.net.au

Website NEW : www.chromalytic.com.au E-mail : info@chromtech.net.au Tel: 03 9762 2034 . . . in AUSTRALIA