



Catch the Buzz



Develop More Productive PPCP Methods by Replacing C18 and HILIC Columns with a Single Ultra II® Aromax Column

Testing of pharmaceuticals and personal care products (PPCPs) by EPA Draft Method 1694 requires separate analyses on multiple columns. Labs can simplify this procedure by replacing both C18 and HILIC columns with a single Ultra II® Aromax column.

[Find out more](#)



PETROCHEMICAL

High Temp Analysis: Rxi®-1HT and Rxi®-5HT



Restek's Rxi® technology unifies outstanding inertness, low bleed, and high reproducibility into a single high performance column line. Take variation out of the equation and get the most consistent results for trace level analysis with Rxi® columns. Rxi columns are more stable at high temperatures than any other manufacturer's column, resulting in higher system sensitivity. This low-bleed characteristic is the result of superior stabilization achieved by optimizing polymer cross-linking and surface deactivation technologies.

[Find out more](#)



PHARMACEUTICAL

Rxi®-624Sil MS The "Go To" GC Column for Fast, Effective Volatile Impurities Method Development



Develop impurity methods faster and more efficiently using a single column that combines the selectivity of a 624 with the thermal stability of a 1 or 5 type column. The new Rxi@-624SiI MS column offers good retention of polar compounds, mass spec compatibility, and unsurpassed inertness, making it the most broadly applicable GC column available to the pharmaceutical industry.

[Download Flyer \(1.1mb PDF\)](#)



FOODS, FLAVORS, & FRAGRANCES



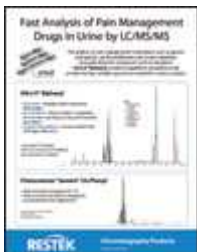
Prevent Fraud in Egg Pasta with Simple Analysis of Cholesterol and Glycerides

Estimating cholesterol in food products is complicated, but often is part of the authentication testing of label claims regarding egg content. The method shown here simplifies fraud detection by incorporating glyceride testing. Easy comparison of the chromatographic profiles of egg and egg product (pasta) samples can be made using an Rtx@-65TG column, which is specifically tested to assure excellent separations and a reliable performance for glycerides.

[Find out more](#)



CLINICAL/FORENSICS



Fast Analysis of Pain Management Drugs in Urine by LC/MS/MS

The analysis of pain management medications, such as opiates and opioids, can be problematic due to poor retention and peak shape for compounds such as morphine. Ultra II@ Biphenyl columns outperform competitors and provide the fast, reliable separations needed for routine analysis.

[Download Brochure \(185kb PDG\)](#)

RESTEK

HROMalytic +61(0)3 9762 2034
ECHnology Pty Ltd
Australian Distributors; Importers & Manufacturers