

THREAD TO BARB & MISC

1/16" NPT Thread to Barb



CT-X-240
1/16" NPT to 1/16" Barb



CT-X-241
1/16" NPT to 3/32" Barb



CT-X-242
1/16" NPT to 1/8" Barb



CT-X-243
1/16" NPT to 5/32" Barb



CT-X-244
1/16" NPT to 3/16" Barb



CT-X-245
1/16" NPT Plug

1/8" NPT Thread to Barb



CT-X-240
1/8" NPT to 1/16" Barb



CT-X-241
1/8" NPT to 3/32" Barb



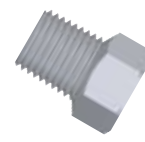
CT-X-242
1/8" NPT to 1/8" Barb



CT-X-243
1/8" NPT to 5/32" Barb



CT-X-244
1/8" NPT to 3/16" Barb



CT-X-242
1/8" NPT Plug

Tube Clamp for 1/8" OD Tubing



CT-X-095
Tube Clamp with Split,
1/8" (3.2mm) OD Tubing

Quick Disconnect for 1/8" OD Tubing



CT-QD-102
Quick Disconnect
for 1/8" OD tubing

1/16" NPT THREAD TO BARB CONNECTORS

CX-240X	1/16" NPT to 1/16" (1.5mm) Barb, PP, 10 pack
CX-241X	1/16" NPT to 3/32" (2.25mm) Barb, PP, 10 pack
CX-242X	1/16" NPT to 1/8" (3mm) Barb, PP, 10 pack
CX-243X	1/16" NPT to 5/32" (4mm) Barb, PP, 10 pack
CX-244X	1/16" NPT to 3/16" (4.75mm) Barb, PP, 10 pack
CX-245X	1/16" NPT Plug, PP, 10 pack

1/8" NPT THREAD TO BARB CONNECTORS

CX-250X	1/8" NPT to 1/16" (1.5mm) Barb, PP, 10 pack
CT-251X	1/8" NPT to 3/32" (2.25mm) Barb, PP, 10 pack
CX-252X	1/8" NPT to 1/8" (3mm) Barb, PP, 10 pack
CX-253X	1/8" NPT to 5/32" (4mm) Barb, PP, 10 pack
CX-254X	1/8" NPT to 3/16" (4.75mm) Barb, PP, 10 pack
CX-255X	1/8" NPT to 1/4" (4.75mm) Barb, PP, 10 pack
CX-256X	1/8" NPT Plug, PP, 10 pack

TUBE CLAMP AND QUICK DISCONNECT

CX-095X	Tube Clamp, White ABS, 10 pack
	Quick Disconnect for 1/8" OD Tubing, each

Positive Shutoff Quick Disconnect

Use the QD-102 quick disconnect for an inline 1/8" OD tubing connection that prevents fluid leaks when disengaged. Turn the mating components to detach with luer-like efficiency. Polypropylene with Viton seals.



QD-102 attached to 1/8" OD tubing

PP = Polypropylene PC = Polycarbonate PE = Polyethylene N = Nylon