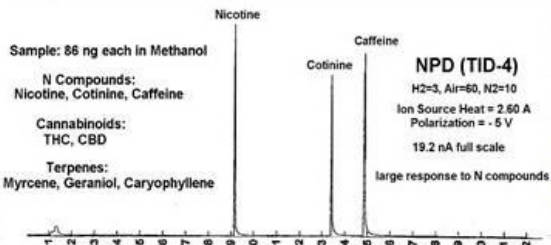


DET's catalytically active TID-10 ceramic Ion Source (\$550) is an easy and inexpensive means of converting NPD equipment to screening analyses for THC, CBD, & Terpenes in Cannabis & Cannabis infused products

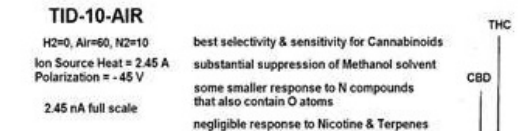
A TID-10 ion source is easily installed into existing NPD equipment on **Thermo Trace 1300, Agilent 6890/7890**, and a few other GC models.

In comparison to other GC detection methods for Cannabis, **TID-10 detection provides compound specific selectivity while requiring only Air or Nitrogen as the detector gas.**

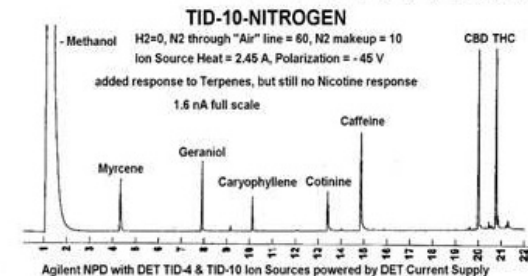
UNIQUE TID-10 THC/CBD & TERPENE SELECTIVITY VS. NPD



Development of a TID-10 type ceramic ion source evolved from DET's method of fabricating electrically heated, ceramic coated ion source elements for NP detection. Unlike glass bead type NPD ion sources, **DET's ceramic sources DO NOT go through a molten physical stage in order to form a robust and durable ionizing surface.** As a result, there are an almost unlimited number of ceramic additives that can be used to affect the catalytic ionizing activity of the surface. **TID-10 is the most active ceramic developed so far.**



For GC analyses of Cannabis and Cannabis infused products, TID-10 Thermionic Surface Ionization Detection provides both **high sensitivity and selectivity for Cannabinoid compounds** using just **Air as the detection gas** environment. If the detector gas is changed to **Nitrogen**, the same equipment provides **selective detection** for many **Terpene compounds** as well.



Best TID-10 signal-to-noise is achieved with an ion source to collector polarization of 45 V or larger as available with NPD electronics on Thermo GC models or from a stand-alone DET Current Supply. Agilent NPD electronics have a lower polarization which still provides TID-10 selectivity, but a lower signal to noise.

DETECTOR Engineering & Technology, inc. 486 N. Wiget Lane, Walnut Creek, CA 94598 USA

HROMalytic +61(0)3 9762 2034
ECHnology Pty Ltd
 Australian Distributors
 Importers & Manufacturers
 www.chromtech.net.au
 Website NEW : www.chromalytic.net.au E-mail : info@chromtech.net.au Tel: 03 9762 2034 . . . IN AUSTRALIA