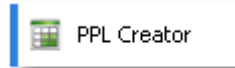




Home >> **Easy Way to Create PPL Files – Programming Spreadsheet**

Easy Way to Create PPL Files – Programming Spreadsheet



There is an easy way to create Pump Programs! Use the PPL Creator spreadsheet which is installed with SyringePumpPro. PPL Creator is supplied by New Era Pumps. It is easy to use but you still need to be familiar with how the pump works, and the pump commands in order to write programs for your pumps.

If your not sure about your particular pump’s brand or model – check out the compatible pump’s page.

Credit: This PPL spreadsheet has taken Barry Cowan owner of New Era Pump Systems a lot of time over the years to create and update.



Pump Programming Spreadsheet

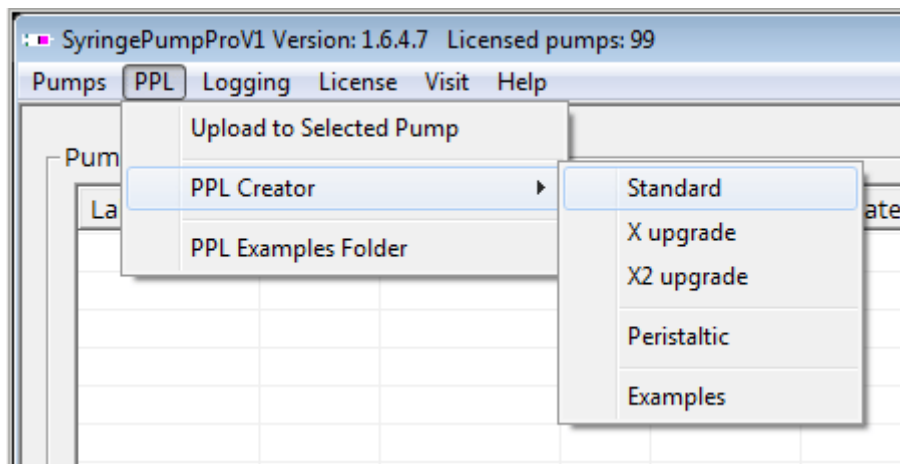
SyringePumpPro installs three versions of the spreadsheets covering the different models of the pumps.

Spreadsheet Name	Target Pumps
<p>Standard PPL Creator.xls</p> <div style="background-color: #92d050; color: white; padding: 5px; display: inline-block; margin-top: 10px;"> Download Standard PPL Creator Spreadsheet </div>	<p>All pumps excluding peristaltic and models with X or X2 upgrades</p> <p>Standard NE-1000, NE-1200, NE-1600, NE-1800, NE-500, NE-4000, NE-4500 models – not using X and X2 upgrade features.</p> <p>NE-1002 micro-fluidic pumps use this spreadsheet with Microfluidic units in selected cell O17.</p>

<p>X and X2 upgrade PPL Creator.xls</p> <p>Download X and X2 upgrade PPL Creator Spreadsheet</p>	<p>X upgrade Pumps</p> <p>Pumps having X and X2 in their part number.</p>
<p>Peristaltic Pump PPL Creator.xls</p> <p>Download Peristaltic PPL Creator Spreadsheet</p>	<p>All Peristaltic pumps</p> <p>Including clear, blue, green heads.</p>
<p>Standard PPL Examples.xls</p> <p>Download Standard PPL Examples Spreadsheet</p>	<p>Program Examples</p> <p>In the pump user manuals there are several example programs. This spreadsheet contains all of the example code for you to work through as a learning exercise and a starting point for your pump programs.</p>

SyringePumpPro installs these spreadsheets

Access these spreadsheets from within SyringePumpPro:

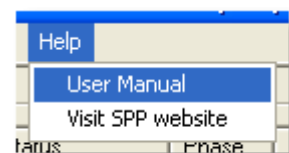


When you have installed SyringePumpPro you can launch the PPL Creator using the start menu entry.

PPL creation requires time spent with the [pump manuals](#) to understand the commands the pumps take.

The PPL spreadsheet is handy because it creates your PPL file for you, by you clicking and selecting the [commands](#) you want. This means no errors when you upload the PPL file. Less frustration and lots of time saved.

See the [User Guide](#) for SyringePumpPro for more details. Help -> User Guide.



[Back to Pump Programming](#) | [Back to FAQs](#)

By SyringePumpPro | January 30th, 2017 | Categories: FAQs, Pump Programming | Tags: NE-1000 NE-1600

NE-1800 NE-4000 New Era

About the Author: SyringePumpPro



As the author of SyringePumpPro products I have been involved with laboratory pumps for about 10 years now. My career spans electronics, avionics, programming, teaching, research and development laboratory experience, and even television.



Take control of your pumps!

Search [input] [magnifying glass icon]

RECENT POSTS

Pump Programming Triggers

Meet the new look New Era Pump Family

New Era Pump Systems Inc

Parts Of A Syringe Pump

Front Panel Controls

MENU

Home

Tour

Compatible Pumps

Pump Manufacturers

Contact Us

Who's Using

Testimonials

About

Blog

Papers Citing SyringePumpPro

Shop

Pricing

Try SyringePumpPro

Find a Distributor

Licensing

Pump Programming Service

Used Pumps

Login

Pumps

Programming

Syringes and Tubing

Manuals

Rates and Specifications

Drawings

Connectivity

Cables

Applications

TAGS

Aladdin

Braintree

Scientific

cables

Chemyx

Cole-Parmer

distributor

diy

dual

Electro-*

Harvard

KDScientific

licence

microscope

NE-300

NE-500

NE-501L

NE-510

NE-1000

NE-1010

See full tags →

© Copyright 2019 SyringePumpPro | All Rights Reserved | [Terms of Use](#) | [Privacy Policy](#)

