

# instrument innovations


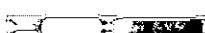

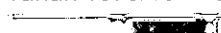

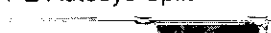
Winter 2000

New Products

Restek designs gas chromatography (GC) consumables to improve instrument performance and to offer alternatives to products only available through a limited list of manufacturers. You'll get more choices and better analyses when you reach for Restek GC Accessories.

## ■ Focal Liners

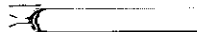
- ✓ Wool at the injection point maximizes vaporization.
- ✓ Dimples ensure wool is placed correctly.
- ✓ Wool can be replaced easily, and stays in position during inlet and during injection.
- ✓ Wool helps "wipe" the needle during injection, thereby removing the sample completely.
- ✓ 100% polymeric deactivation increases inertness to prevent sample adsorption.

Focal Liners	Each	5-Pk.
HP 4mm Split 	21022	21023
Varian 1078/1079 Split 	21024	21025
Shimadzu 17A Split 	21020	21021
Varian 1075/1077 Split 	21030	21031
Fison 5mm Split 	21028	21029
PE Autosys Split 	21026	21027

## ■ Low-Pressure Drop Liner

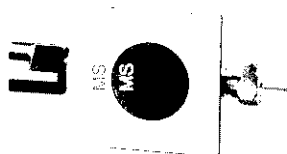
for HP 6890 Split/Splitless Injection Port

- ✓ OD slightly smaller than splitless liner for increased flow during injection.
- ✓ Features dual-taper design for reproducible positioning of wool.
- ✓ Wool allows wiping of the syringe upon injection, removing the sample completely.

Liner	Each	5-Pk.
Low-Pressure Drop 	21032	21033

## ■ EZ-Vent™ 2000 Interface

Our new EZ-Vent™ 2000 interface will revolutionize the way you connect GC columns to the mass spectrometer (MS), and help you avoid lengthy vent and pump-down of your MS system every time you change a column.



The Restek EZ-Vent™ 2000 does not require any additional plumbing. It works on a critical orifice principle, eliminating the need to plumb your MS interfaces with purge gases. Install Restek's EZ-Vent™ 2000 transfer

line and connector and you are ready to run the MS without worrying about pump-down during the next column change.

The EZ-Vent™ 2000 interface is available for Hewlett-Packard 5971, 5972, 5973 and Varian Saturn MS systems. All-metal components are Silcosteel®-coated and the transfer lines are deactivated for maximum inertness to maintain the integrity of your system.

### Features

Column changes take only minutes.

Less expensive than other models with equal performance.

Very low dead volume fittings and small ID tubing

Silcosteel®-coated metal components. All transfer lines are deactivated for maximum inertness.

### Benefits

Save time—spend your time on the science, not the maintenance.

Save money—very cost effective. Previous costs of cool-downs and pump-downs are now wise investments in analytical runs.

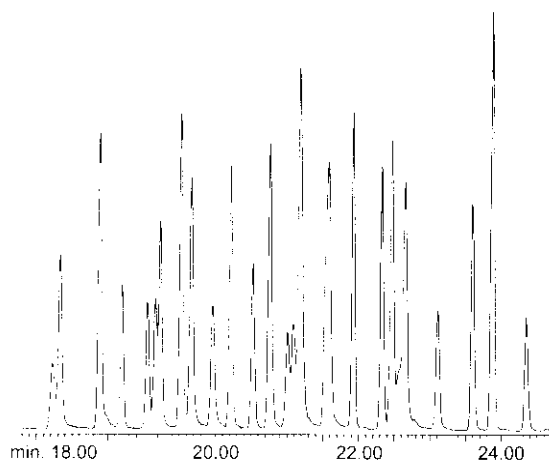
Ensures no band broadening or change in analytical performance.

No adsorption or loss of reactive compounds = more accurate analyses.



www.restekcorp.com

The EZ-Vent™ interface causes no peak broadening and increases the effective length of the column.



30m, 0.25mm ID, 0.5µm Rtx™-5MS (cat.# 12638)  
 4mm single gooseneck liner with FS wool (cat.# 22405)  
 Inj.: 50ng/µL semivolatle standard  
 Oven temp.: 35°C (hold 1 min.) to 300°C @ 10°C/min. (hold 20 min.)  
 Splitless hold time: 1min.  
 Inj. temp.: 300°C  
 Det. temp.: 310°C  
 Det.: HP 5971A MS, full scan  
 Carrier gas: helium @ 15psi

**Restek (U.S.):**  
 phone: 800-356-1688  
 814-353-1300  
 fax: 814-353-1309

**Restek GmbH:**  
 phone: (49) 06172 2797 0  
 restek-gmbh@t-online.de

**Restek France:**  
 phone: (33) 01 60 78 32 10  
 restekfr@club-internet.fr

**Thames Restek U.K., Ltd.:**  
 phone: (44) 01753 624111  
 SALESTHRES@aol.com

Restek Trademarks: EZ-Vent, Silcosteel and Rtx.  
 © Copyright 2000. Restek Corporation

## ■ EZ-Vent™ 2000 Product Listing

### EZ-Vent™ 2000 Interface for HP 5971, 5972, & 5973 MS

Description	Cat.#
Kit includes EZ-Vent™ 2000, 1/16" SS nut, 0.4mm capillary column ferrule and 0.4mm transfer line ferrule, 100µm ID deactivated transfer line, and EZ-Vent™ plug	21013

### EZ-Vent™ 2000 Interface for Varian Saturn MS

Description	Cat.#
Kit includes EZ-Vent™ 2000, 1/16" SS nut, 0.4mm capillary column ferrule and 0.4mm transfer line ferrule, 100µm ID deactivated transfer line, and EZ-Vent™ plug	21014

### Replacement EZ-Vent™ 2000 Ferrules for Connecting Capillary Column to EZ-Vent™

Description	Cat.#
0.4mm ID, 2-pk.	21015
0.5mm ID, 2-pk.	21016

### Replacement EZ-Vent™ 2000 Ferrules for Connecting Transfer Line to EZ-Vent™

Description	Cat.#
0.4mm ID, 2-pk.	21043

### Replacement EZ-Vent™ 2000 Union

Description	Cat.#
Union, each	21017

### Replacement EZ-Vent™ 2000 Transfer Line

Description	Cat.#
Deactivated-100µm ID, 3 ft.	21018

### 1/4- & 5/16-inch Open-End Wrench Installation Tool

Description	Cat.#
Wrench, 2-pk.	20110

Lit. Cat.# 59207-INT

