



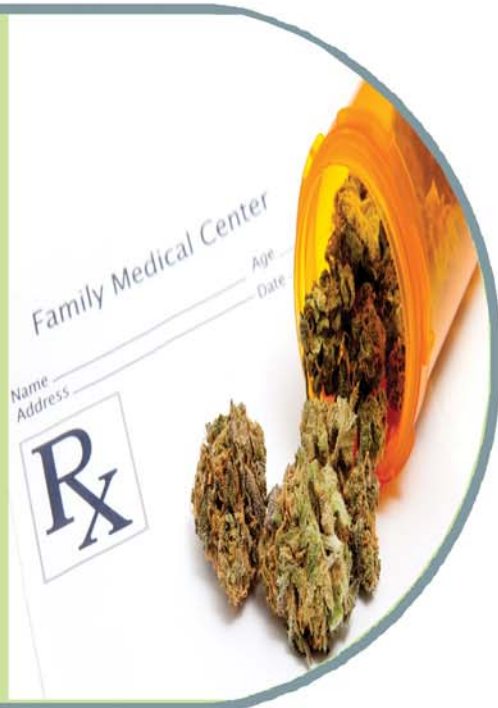
Pharmaceutical

MEDICAL MARIJUANA - CANNABIS



www.dps-instruments.com

Medical cannabis, also referred to as medical marijuana, refers to the use of constituents of cannabis, THC and other cannabinoids, as a physician-recommended form of medicine therapy. The medicinal value of cannabis has several well-documented beneficial effects, such as the amelioration of nausea and vomiting, stimulation of hunger in chemotherapy and AIDS patients, lowered intraocular eye pressure for treating glaucoma, as well as general analgesic pain relieving effects. DPS has configured the portable and rugged Companion Cannabis GC to analyze these cannabinoids in the growing fields, or to aid in blending at the dispensary. Our sensitive PID detector is ideal for identifying THC, CBC, CBG, and CBD and determining their concentrations. The fast heating and rapid cooling column oven in every DPS GC vastly increases your sample throughput. The fully integrated Companion Cannabis GC Analyzer System is small, lightweight, and rugged to go where ever you need it. All DPS systems are modular for expandability, upgrades, and easy service.



Available configurations include:

500-C-107 - Companion Portable Cannabis GC Analyzer (PID, 30m)

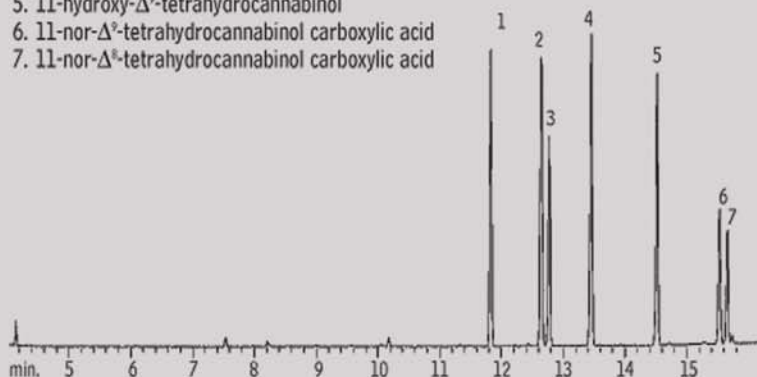


Cannabinoids Rtx[®]-5

1. cannabidiol
2. Δ^8 -tetrahydrocannabinol
3. Δ^9 -tetrahydrocannabinol
4. cannibinol
5. 11-hydroxy- Δ^9 -tetrahydrocannabinol
6. 11-nor- Δ^9 -tetrahydrocannabinol carboxylic acid
7. 11-nor- Δ^8 -tetrahydrocannabinol carboxylic acid

15m, 0.25mm ID, 0.25 μ m Rtx[®]-5 (cat.# 10220)
1.0 μ L splitless injection of cannabinoids
Conc.: 100 μ g/mL

Oven temp.: 50°C (hold 0.5 min.) to 225°C @ 30°C/min,
to 325°C @ 10°C/min.
Inj. temp.: 225°C



Chromatogram courtesy of: Restek Corporation www.restek.com

4/2010
Specifications may change without notice.