



Barry Burger
Innovations Chemist
15+ years of service!

Bonded Packed Column Stationary Phases

- Short conditioning times.
- Low bleed levels.
- Higher sensitivities.
- Longer column lifetimes.
- Unsurpassed inertness for active compounds.

Bonded phases are used in capillary columns because they provide a dramatic increase in column quality. To truly bridge the gap between traditional packed columns and capillary columns, it was necessary to develop bonded liquid phases for packed columns. Packed column chromatographers can expect shorter conditioning times, lower bleed, and longer column lifetimes by using Restek bonded phase packed columns.

Bonded phases also last much longer than nonbonded phases. Bonded phases are more resistant to oxidation than nonbonded phases because of the stronger intermolecular forces produced by cross-linking. Because the material is thoroughly cross-linked, the phase will not sag, as often happens with nonbonded phases. Figure 1 shows a comparison of a bonded and a nonbonded methyl silicone column after 170 temperature cycles. The results show the impressive durability of bonded phases.

Restek's packed columns deliver the 1-2-3 PUNCH!

1. Bonded stationary phases mean short conditioning times, low bleed, and unsurpassed column lifetimes.

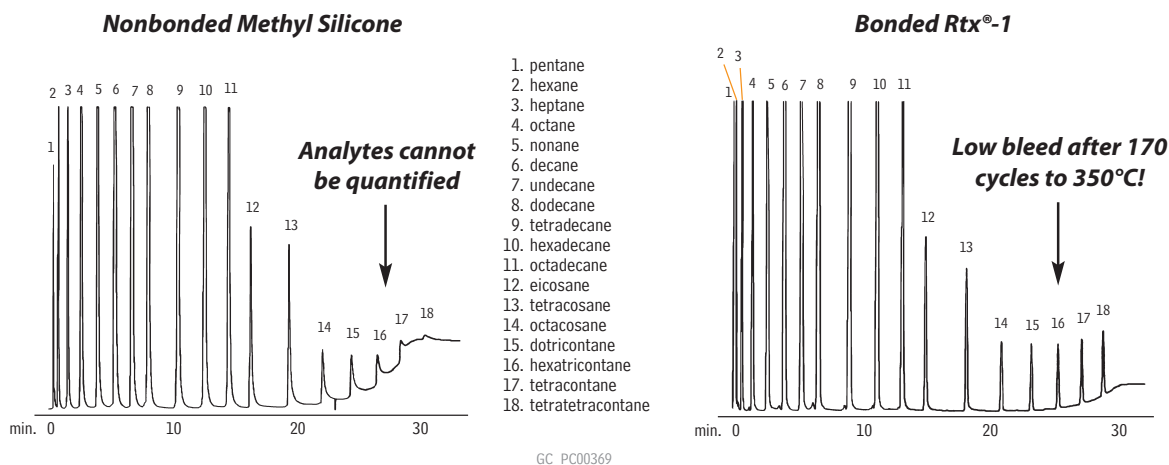
2. SilcoSmooth™ tubing provides the inertness of glass and the durability of stainless steel.

3. Silcoport™ diatomaceous earth provides unsurpassed inertness for trace analysis.

Equivalent Liquid Phases

Rtx®-1	BP-1, CC-1, CP-Sil 5CB, DB-1, DC-200, GE-SF-96, HP-1, HP-101, OV-1, OV-101, RSK-150, RH-1, SE-30, SP-2100, SPB-1, UCC W-98
Rtx®-5	BP-5, CB-5, CC-5, CP-Sil 8CB, DB-5, HP-5, OV-73, SE-52, SE-54, SPB-5, Ultra-5
Stabilwax®	BP-20, CP-Wax, CW-20, DB-Wax, HP-Innowax, PE-Wax, Supelcowax-10

Figure 1 Bonded packed columns exhibit longer lifetime than nonbonded packed columns.



25" x 1/8" x 2mm ID Rtx®-1 Sim Dist 2887 SilcoSmooth™ stainless steel (cat.# 80000-800)
1.0µl direct injection, 1–12% (w/w) each component
Oven temp.: 35°C to 350°C @ 10°C/min. (hold 5 min.)
Inj. & det. temp.: 350°C
Carrier gas: helium @ 25mL/min.
FID sensitivity: 256 x 10⁻¹¹ AFS

cat.# 31674 (1% each listed analyte in CS₂) and cat.# 31675 (5% each, neat) meet requirements of ASTM D2887-01.