

Vanillin on Ultra C8

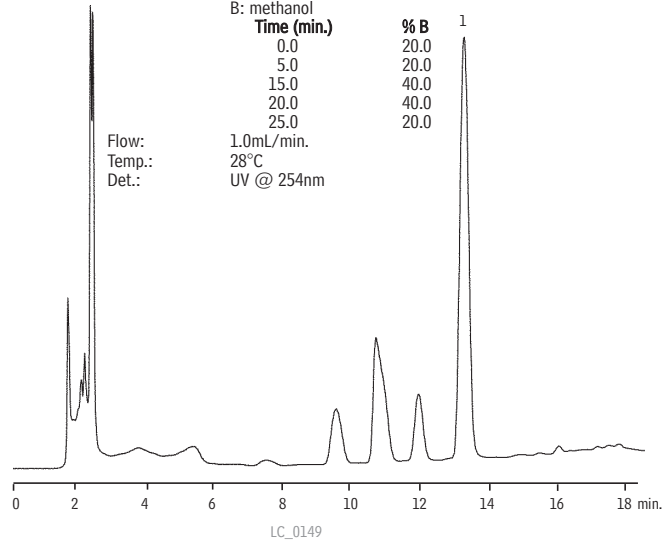
Sample:
Inj.: 10mL
Conc.: 5% solution of
vanilla extract
Solvent: 40% ethanol

Column: Ultra C8
Cat.#: 9103565
Dimensions: 150mm x 4.6mm
Particle size: 5µm
Pore size: 100Å

Conditions:
Mobile phases: A: 1.2% acetic acid in water
B: methanol

Time (min.)	% B
0.0	20.0
5.0	20.0
15.0	40.0
20.0	40.0
25.0	20.0

Flow: 1.0mL/min.
Temp.: 28°C
Det.: UV @ 254nm



Peak List:
1. vanillin

Vanillin and Ethyl Vanillin on Ultra C8

Peak List: **Conc. (mg/mL)**
1. vanillin 0.12
2. ethyl vanillin 0.04

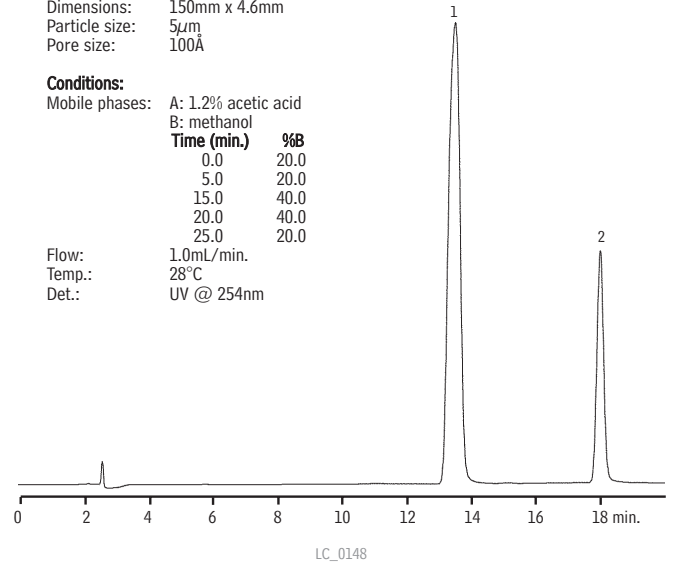
Sample:
Inj.: 10µL
Solvent: 40% ethanol

Column: Ultra C8
Cat.#: 9103565
Dimensions: 150mm x 4.6mm
Particle size: 5µm
Pore size: 100Å

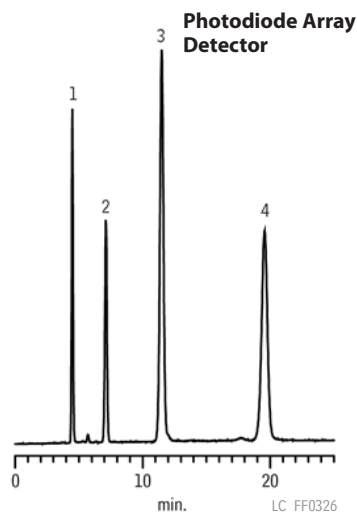
Conditions:
Mobile phases: A: 1.2% acetic acid
B: methanol

Time (min.)	%B
0.0	20.0
5.0	20.0
15.0	40.0
20.0	40.0
25.0	20.0

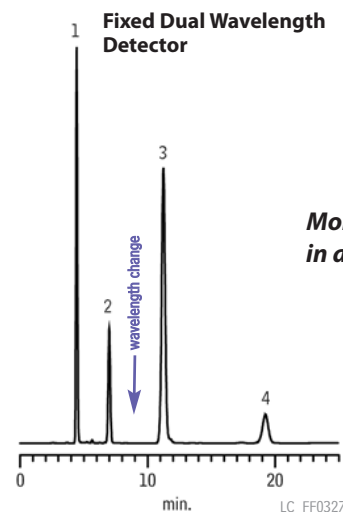
Flow: 1.0mL/min.
Temp.: 28°C
Det.: UV @ 254nm



Sudan Dyes on Ultra Aqueous C18



1. Sudan I
2. Sudan II
3. Sudan III
4. Sudan IV



**Monitor Sudan I, II, III, and IV
in a single, isocratic analysis!**

min. LC_FF0326

Sample:
Inj.: 20µL, mixture of Sudan I, Sudan II, Sudan III, Sudan IV
Conc.: 20µg/mL each component
Sample diluent: methanol

Column: Ultra Aqueous C18
Cat.#: 9178565
Dimensions: 150mm x 4.6mm
Particle size: 5µm
Pore size: 100Å

Conditions:
Mobile phase: methanol:water, 97:3
Flow: 1mL/min.
Temp.: ambient
Det.: UV @ 476/493/512/357nm (left) or UV @ 488/520nm (right)