

Stabilwax® (polar phase; Crossbond® Carbowax® polyethylene glycol)

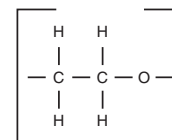
- General purpose columns for FAMES, flavor compounds, essential oils, solvents, xylene isomers, US EPA Method 603 (acrolein/acrylonitrile).
- Resistant to oxidative damage.
- Temperature range: 40°C to 250°C.
- Equivalent to USP G14, G15, G16, G20, G39 phases.

Our polar-deactivated surface tightly binds the Carbowax® polymer and increases thermal stability, relative to competitive columns. The bonding mechanisms produce a column that can be rejuvenated by solvent washing. Compared to silicone stationary phases, PEG phases are more resistant to damage from strongly acidic or basic volatile compounds, including inorganic acids and volatile inorganic bases.

Stabilwax® Columns (fused silica)

(Crossbond® Carbowax® polyethylene glycol)

ID	df (µm)	temp. limits	15-Meter	30-Meter	30-Meter 6/pk.	60-Meter
0.25mm	0.10	40 to 250°C	10605	10608		10611
	0.25	40 to 250°C	10620	10623		10626
	0.50	40 to 250°C	10635	10638		10641
0.32mm	0.10	40 to 250°C	10606	10609		10612
	0.25	40 to 250°C	10621	10624		10627
	0.50	40 to 250°C	10636	10639		10642
	1.00	40 to 240/250°C	10651	10654	10654-600	10657
0.53mm	0.10	40 to 250°C	10607	10610		10613
	0.25	40 to 250°C	10622	10625		10628
	0.50	40 to 250°C	10637	10640		10643
	1.00	40 to 240/250°C	10652	10655	10655-600	10658
	1.50	40 to 230/240°C	10666	10669		10672
2.00	40 to 220/230°C	10667	10670			

Stabilwax® Structuresimilar **phases**

DB-WAX, DB-WAXetr, HP-Wax, HP-Innowax, Supelcowax 10, CP-Wax 52 CB

ordering **note**

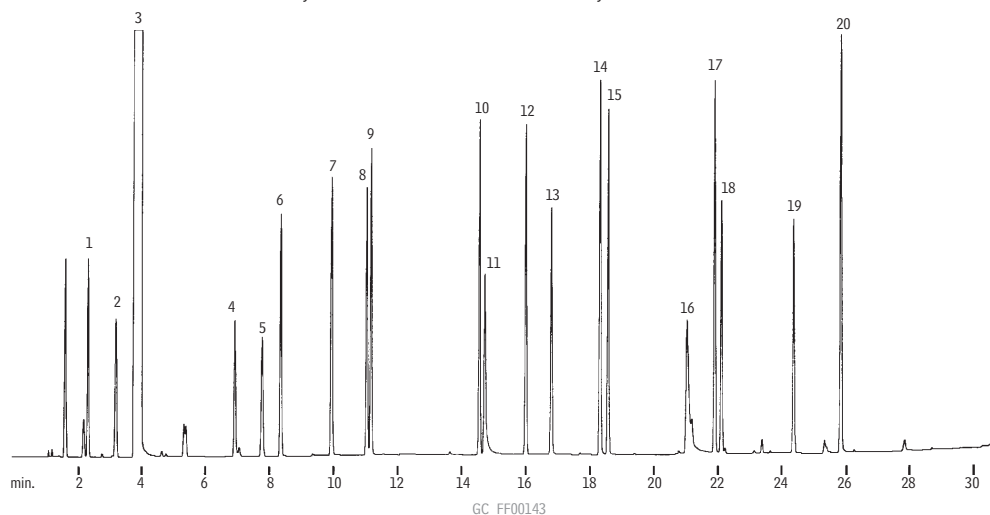
Stabilwax® columns are available with Integra-Guard™ built-in guard columns. Get the protection without the connection! See [page 30](#) for descriptions and ordering information.

also **available****MXT® Columns**

Rugged, flexible, Silcosteel® treated stainless steel tubing; inertness comparable to fused silica tubing. See [page 106](#) for our MXT®-WAX columns.

Synthetic mushroom aroma on a Stabilwax® column.

- | | | |
|---------------------------------|------------------|------------------------|
| 1. acetone | 8. 1-pentanol | 15. octyl alcohol |
| 2. ethyl acetate | 9. 3-octanone | 16. phenylacetaldehyde |
| 3. methylene chloride (solvent) | 10. 3-octanol | 17. α-terpineol |
| 4. hexanal | 11. nonanal | 18. 2,4-nonadienal |
| 5. amyl acetate | 12. 1-octen-3-ol | 19. 2,4-decadienal |
| 6. 1-butanol | 13. furfural | 20. benzyl alcohol |
| 7. 3-methyl-1-butanol | 14. benzaldehyde | |



Column: Stabilwax®, 30m, 0.32mm ID, 1.0µm (cat.# 10654)
 Inj.: 1.0µL split injection of a synthetic mushroom aroma
 Conc.: 10ng per component
 Oven temp.: 40°C to 220°C @ 6°C/min.
 Inj./det. temp.: 260°C
 Carrier gas: hydrogen
 Linear velocity: 40cm/sec.
 FID sensitivity: 4 x 10⁻¹¹ AFS
 Split ratio: 100:1