

Antibiotic Sulfamethoxazole on Allure® Basix

Peak List:

1. sulfamethoxazole

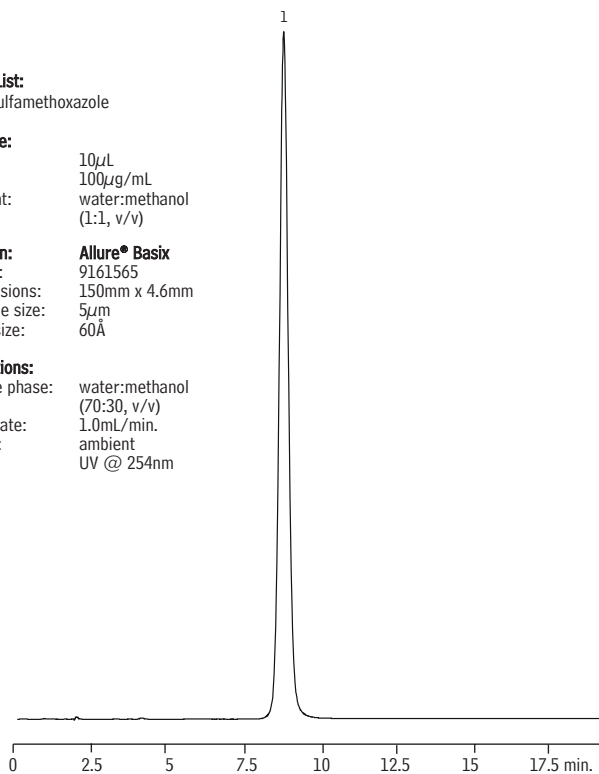
Sample:

Inj.: 10 μ L
 Conc.: 100 μ g/mL
 Solvent: water:methanol
 (1:1, v/v)

Column: Allure® Basix
 Cat.#: 9161565
 Dimensions: 150mm x 4.6mm
 Particle size: 5 μ m
 Pore size: 60Å

Conditions:

Mobile phase: water:methanol
 (70:30, v/v)
 Flow rate: 1.0mL/min.
 Temp.: ambient
 Det.: UV @ 254nm



LC_0066

Antibiotic Sulfamethoxazole, Trimethoprim, and Naphthoate on Allure® C18

Peak List:

1. trimethoprim
2. sulfamethoxazole
3. naphthoate

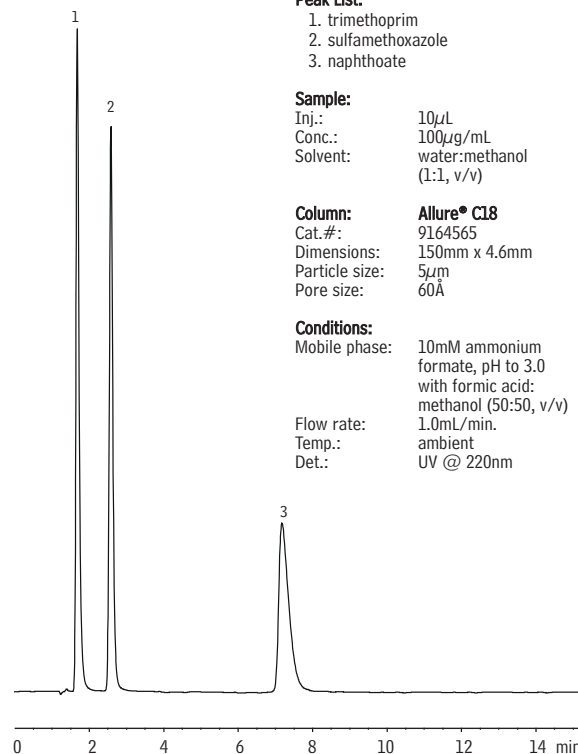
Sample:

Inj.: 10 μ L
 Conc.: 100 μ g/mL
 Solvent: water:methanol
 (1:1, v/v)

Column: Allure® C18
 Cat.#: 9164565
 Dimensions: 150mm x 4.6mm
 Particle size: 5 μ m
 Pore size: 60Å

Conditions:

Mobile phase: 10mM ammonium
 formate, pH to 3.0
 with formic acid:
 methanol (50:50, v/v)
 Flow rate: 1.0mL/min.
 Temp.: ambient
 Det.: UV @ 220nm



LC_0067

Antibiotic Cephaloridine on Ultra IBD
(Reversed Phase)

Peak List:

1. cephaloridine

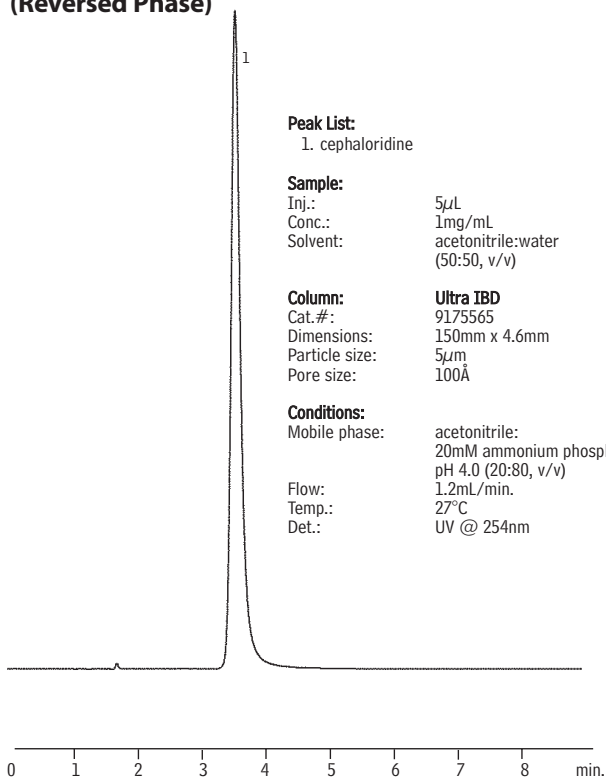
Sample:

Inj.: 5 μ L
 Conc.: 1mg/mL
 Solvent: acetonitrile:water
 (50:50, v/v)

Column: Ultra IBD
 Cat.#: 9175565
 Dimensions: 150mm x 4.6mm
 Particle size: 5 μ m
 Pore size: 100Å

Conditions:

Mobile phase: acetonitrile:
 20mM ammonium phosphate,
 pH 4.0 (20:80, v/v)
 Flow: 1.2mL/min.
 Temp.: 27°C
 Det.: UV @ 254nm



LC_0102

Antidepressants (Tricyclic) on Allure® Basix

Peak List:

1. doxepin
2. nordoxepin
3. amitriptyline
4. imipramine
5. desimipramine
6. nortriptyline
7. protriptyline

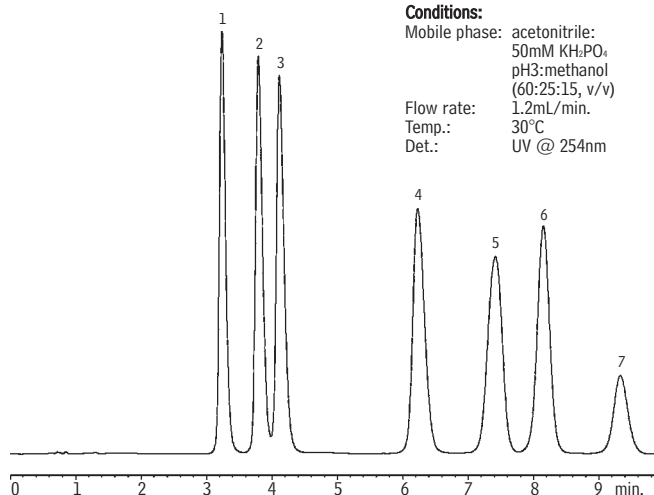
Sample:

Inj.: 10 μ L
 Conc.: 100 μ g/mL each
 Solvent: mobile phase

Column: Allure® Basix
 Cat.#: 9161565
 Dimensions: 150mm x 4.6mm
 Particle size: 5 μ m
 Pore size: 60Å

Conditions:

Mobile phase: acetonitrile:
 50mM KH₂PO₄
 pH3:methanol
 (60:25:15, v/v)
 Flow rate: 1.2mL/min.
 Temp.: 30°C
 Det.: UV @ 254nm



LC_0053