

Laxative Lactulose Concentrate by USP 25: Resolution Solution on Pinnacle™ II Amino

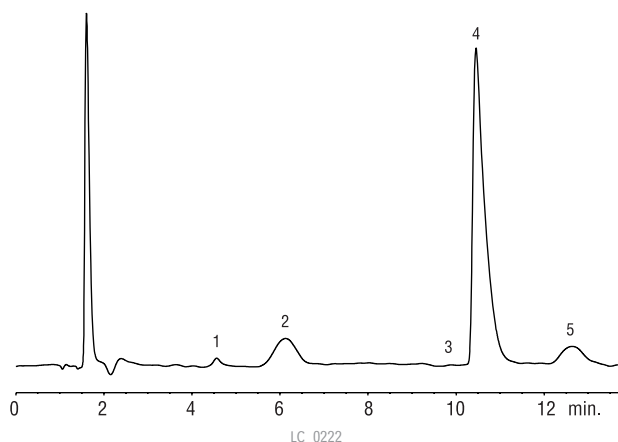
Peak List:	Conc. (mg/mL)	Ret. Time (min.)	RRT	Res. Inj. %	RSD (n=5)
1. fructose	0.4	4.6	0.44	—	—
2. galactose	6.4	6.1	0.58	—	—
3. epi-lactose	unknown	10.0	0.95	—	—
4. lactulose	40	10.5	1.00	1.1	0.3%
5. lactose	4.8	12.7	1.21	2.9	—

Sample:

Inj.: 20µL resolution standard
Solvent: acetonitrile:water (50:50)

Column: Pinnacle™ II Amino
Cat.#: 9217365
Dimensions: 150mm x 4.6mm
Particle size: 3µm
Pore size: 110Å

Conditions:
Mobile phase: 10mM sodium phosphate monobasic in water, pH 4.8: acetonitrile (22:78, v/v)
Flow: 1.3mL/min.
Temp.: 40°C
Det.: refractive index @ 40°C

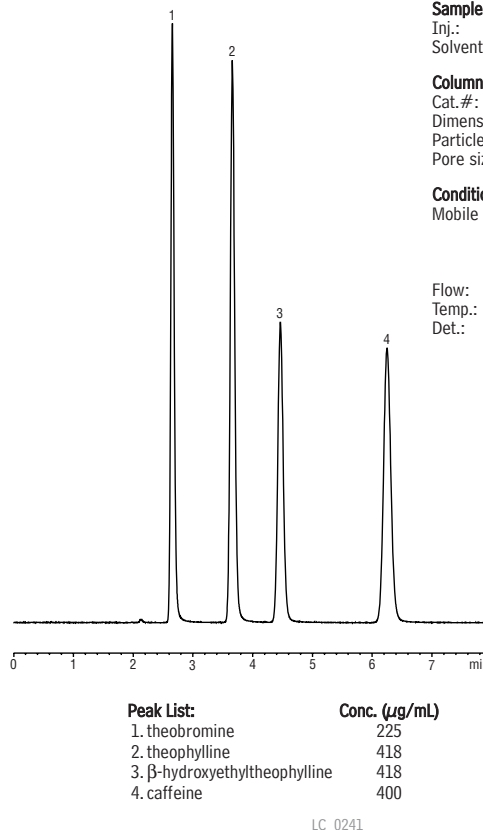


Xanthines on Pinnacle™ DB C18

Sample:
Inj.: 2µL
Solvent: mobile phase

Column: Pinnacle™ DB C18
Cat.#: 9414565
Dimensions: 150mm x 4.6mm
Particle size: 5µm
Pore size: 140Å

Conditions:
Mobile phase: 20mM KH₂PO₄, pH 3.0: acetonitrile (90:10 v/v)
Flow: 1.0 mL/min.
Temp.: 27°C
Det.: UV @ 254nm



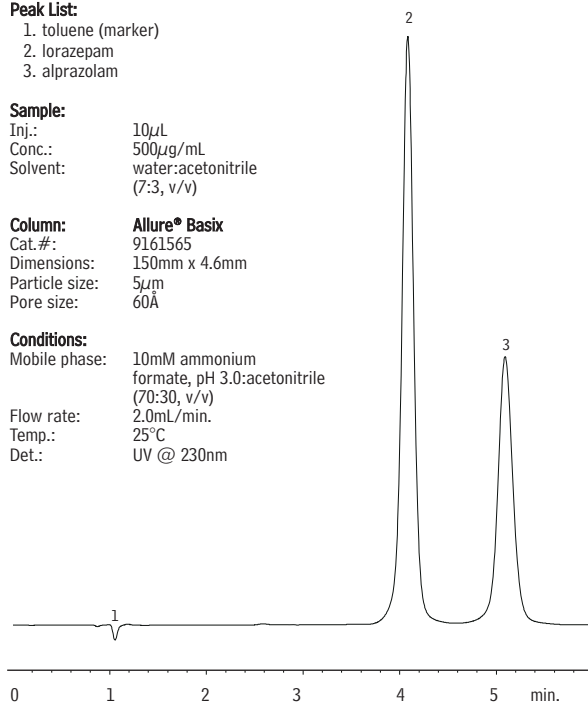
Sedatives Alprazolam and Lorazepam on Allure® Basix

Peak List:
1. toluene (marker)
2. lorazepam
3. alprazolam

Sample:
Inj.: 10µL
Conc.: 500µg/mL
Solvent: water:acetonitrile (7:3, v/v)

Column: Allure® Basix
Cat.#: 9161565
Dimensions: 150mm x 4.6mm
Particle size: 5µm
Pore size: 60Å

Conditions:
Mobile phase: 10mM ammonium formate, pH 3.0:acetonitrile (70:30, v/v)
Flow rate: 2.0mL/min.
Temp.: 25°C
Det.: UV @ 230nm



Sedative Cyclobenzaprine on Allure® Basix

Peak List:
1. toluene (marker)
2. cyclobenzaprine HCl

Sample:
Inj.: 1µL
Conc.: 1.5µg/mL
Solvent: 100% water

Column: Allure® Basix
Cat.#: 9161565
Dimensions: 150mm x 4.6mm
Particle size: 5µm
Pore size: 60Å

Conditions:
Mobile phase: 10mM ammonium formate, pH 3.0: acetonitrile (25:75, v/v)
Flow rate: 1.2mL/min.
Temp.: 30°C
Det.: UV @ 230nm

