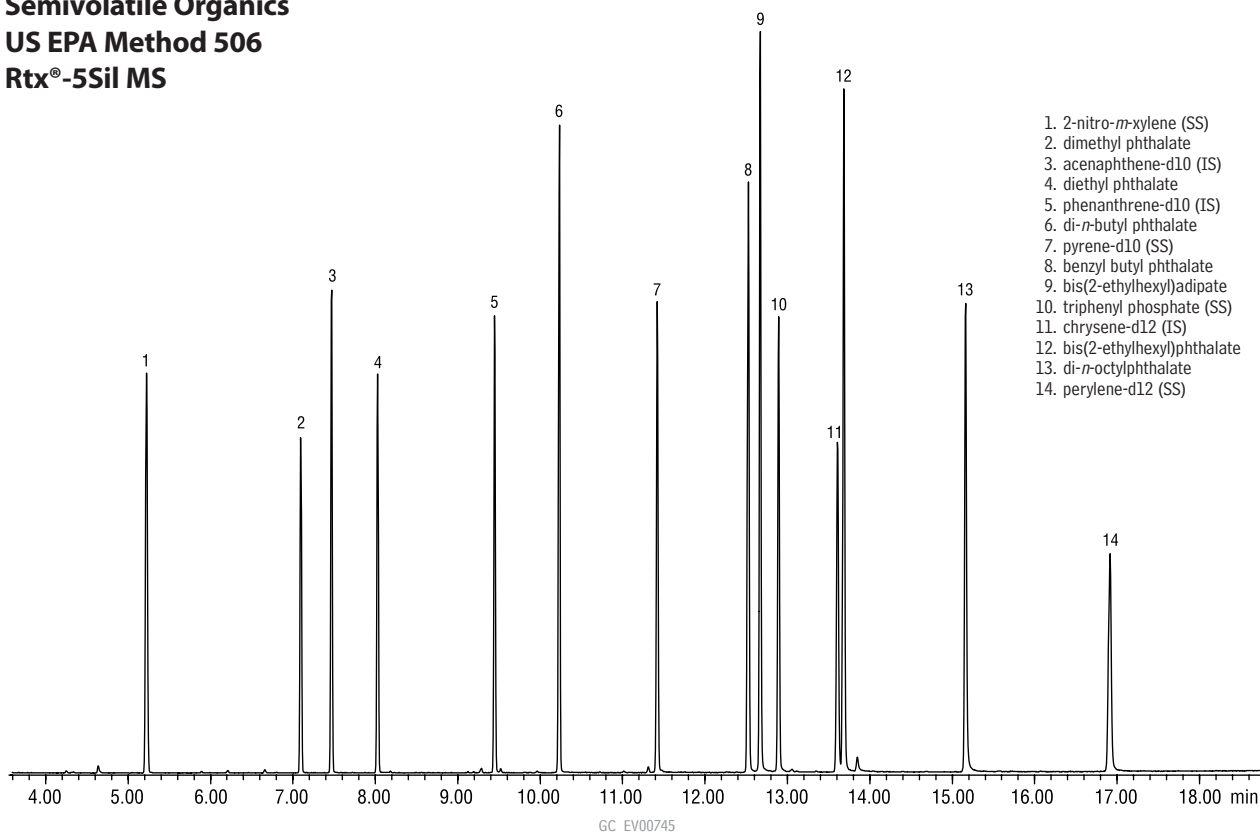


Semivolatile Organics
US EPA Method 506
Rtx®-5Sil MS



1. 2-nitro-*m*-xylene (SS)
2. dimethyl phthalate
3. acenaphthene-d10 (IS)
4. diethyl phthalate
5. phenanthrene-d10 (IS)
6. di-*n*-butyl phthalate
7. pyrene-d10 (SS)
8. benzyl butyl phthalate
9. bis(2-ethylhexyl)adipate
10. triphenyl phosphate (SS)
11. chrysene-d12 (IS)
12. bis(2-ethylhexyl)phthalate
13. di-*n*-octylphthalate
14. perylene-d12 (SS)

Column: Rtx®-5Sil MS, 30m, 0.25mm ID, 0.25 μ m (cat.# 12723)
 Sample: 506 Calibration Mix, 1000 μ g/mL each analyte (cat.# 31845)
 Method 525.2 Internal Standard Mix (cat.# 31825)
 Method 525.2 Surrogate Standard Mix (cat.# 31826)
 Inj.: 1.0 μ L, 20ppm each analyte (10ng on column)
 4mm splitless single gooseneck inlet liner (cat.# 20799)
 splitless hold time 0.40 min., 0.45 min. pressure pulse @ 50psi
 GC: Agilent 6890
 Inj. temp.: 270°C
 Carrier gas: helium, constant flow
 Flow rate: 1.0mL/min.
 Oven temp.: 80°C (hold 0.5 min.) to 260°C @ 18°C/min. (hold 1 min.)
 Det.: Agilent 5973 GC/MS
 Transfer
 line temp.: 280°C
 Scan range: 35–550amu
 Solvent delay: 3 min.
 Tune: DFTPP

a plus 1 story

"Any time I have any type of chromatography question, I know that I can call Restek Technical Service for assistance. Every time I have spoken to them, they have been extremely helpful, and friendly!"

Carisa A. Kelley, Exygen Research