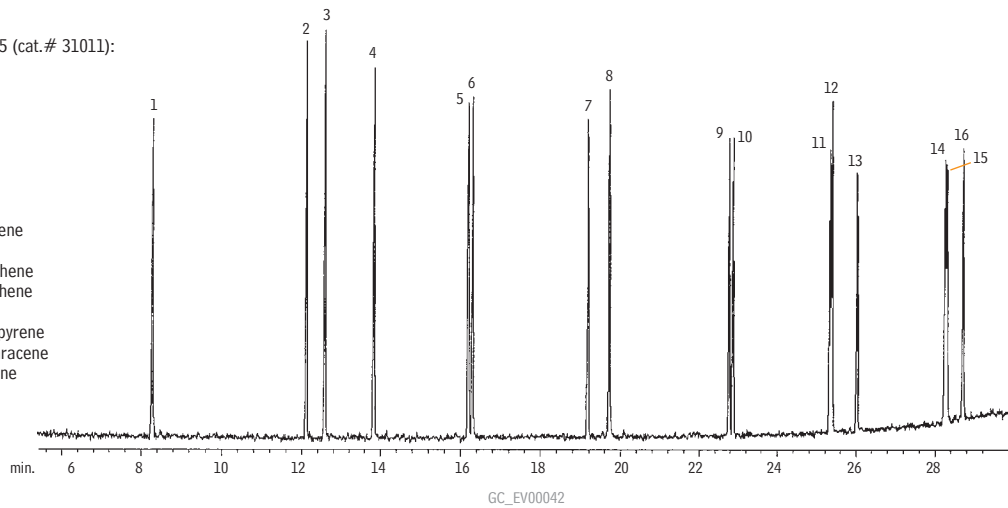


Polycyclic Aromatic Hydrocarbons US EPA Method 8100 MXT®-5

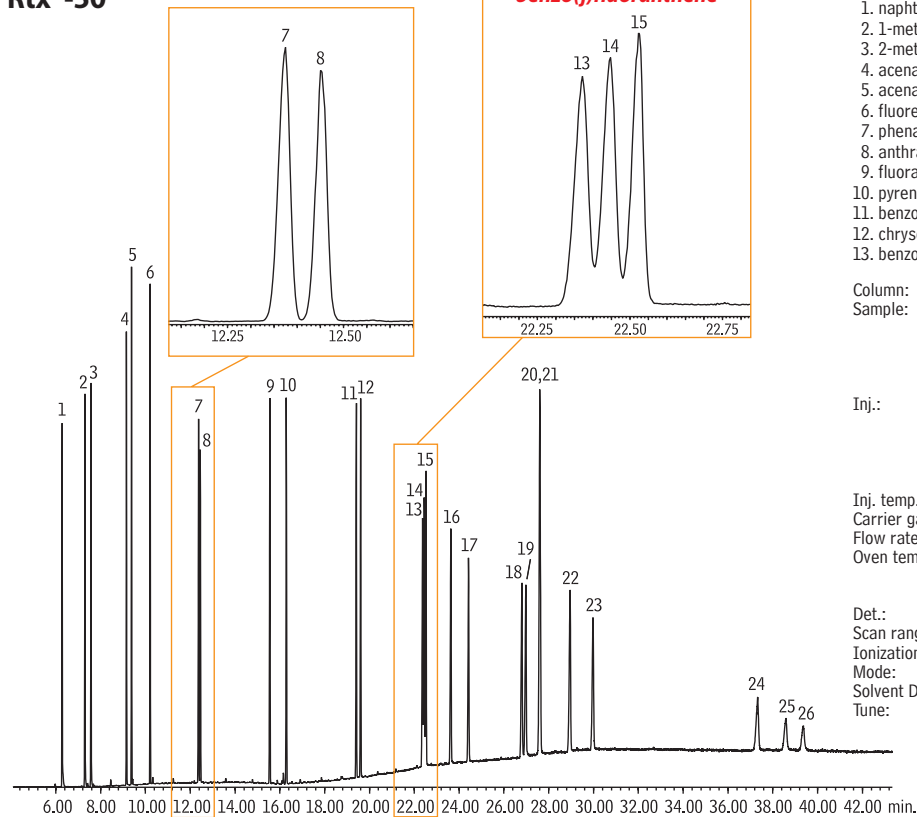
Reference Standards
SV Calibration Mix #5 (cat.# 31011):

1. naphthalene
2. acenaphthylene
3. acenaphthene
4. fluorene
5. phenanthrene
6. anthracene
7. fluoranthene
8. pyrene
9. benzo(a)anthracene
10. chrysene
11. benzo(b)fluoranthene
12. benzo(k)fluoranthene
13. benzo(a)pyrene
14. indeno(1,2,3-cd)pyrene
15. dibenzo(a,h)anthracene
16. benzo(ghi)perylene



Column: MXT®-5, 30m, 0.28mm ID, 0.25 μ m (cat.# 70224)
 Inj.: 1.0 μ L splitless injection of PAHs
 Conc.: 20ng/ μ L
 Oven temp.: 40°C to 325°C @ 10°C/min. (hold 10 min.)
 Inj./det. temp.: 280°C/325°C
 Detector: MS
 Carrier gas: helium
 Linear velocity: 50cm/sec. set @ 325°C
 Splitless hold time: 1 min.

Polycyclic Aromatic Hydrocarbons Rtx®-50



- | | |
|--------------------------|------------------------------|
| 1. naphthalene | 14. benzo(k)fluoranthene |
| 2. 1-methylnaphthalene | 15. benzo(j)fluoranthene |
| 3. 2-methylnaphthalene | 16. benzo(a)pyrene |
| 4. acenaphthylene | 17. 3-methylcholanthrene |
| 5. acenaphthene | 18. dibenzo(a,h)acridine |
| 6. fluorene | 19. dibenzo(a,j)acridine |
| 7. phenanthrene | 20. indeno(1,2,3-cd)pyrene |
| 8. anthracene | 21. dibenzo(a,h)anthracene |
| 9. fluoranthene | 22. benzo(ghi)perylene |
| 10. pyrene | 23. 7H-dibenzo(c,g)carbazole |
| 11. benzo(a)anthracene | 24. dibenzo(a,e)pyrene |
| 12. chrysene | 25. dibenzo(a,i)pyrene |
| 13. benzo(b)fluoranthene | 26. dibenzo(a,h)pyrene |

Column: Rtx®-50, 30m, 0.25mm ID, 0.25 μ m (cat.# 10523)
 Sample: PAH Mix, 20 μ g/mL each compound
 SV Calibration Mix #5/610 PAH Mix (cat.# 31011)
 PAH Supplement Mix for Method 8100 (cat.# 31857)
 1-methylnaphthalene (cat.# 31283)
 2-methylnaphthalene (cat.# 31285)
 Inj.: 1.0 μ L (20ng on-column concentration),
 pulsed splitless: pulse 20psi @ 0.3 min.,
 40mL/min. @ 0.2 min.,
 4mm Drilled Uniliner® (hole near top)
 inlet liner (cat.# 21055)
 Inj. temp.: 300°C
 Carrier gas: helium, constant flow
 Flow rate: 1.2mL/min.
 Oven temp.: 90°C (hold 2.0 min.) to 215°C @ 25°C/min. to
 220°C @ 2.5°C/min. to 300°C @ 10°C/min. to
 320°C @ 2.5°C/min. (hold 15 min.)
 Det.: MS
 Scan range: 50-550amu
 Ionization: EI
 Mode: scan
 Solvent Delay: 4.0 min.
 Tune: DFTPP

new!