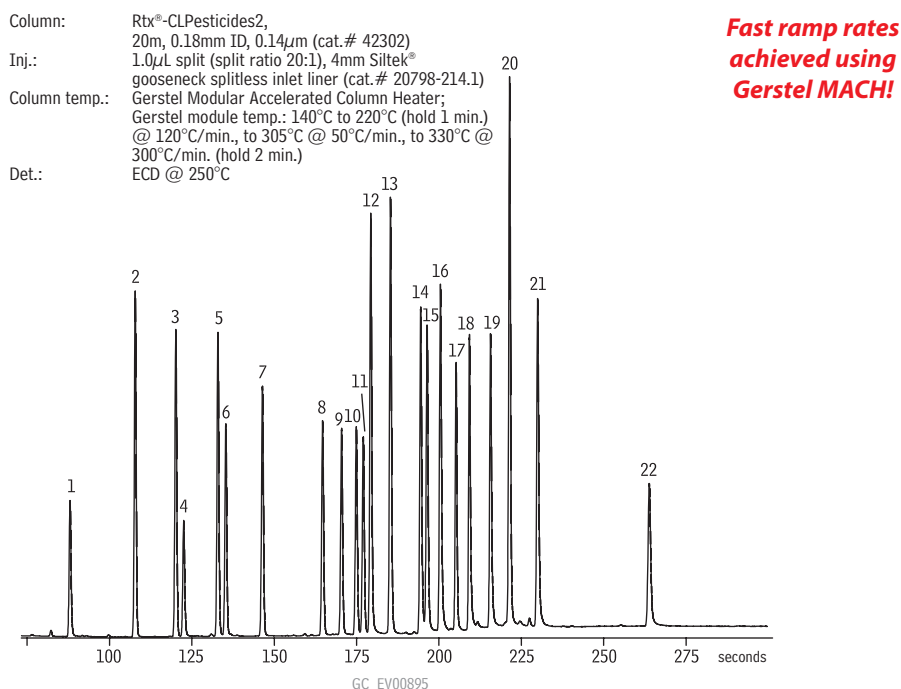
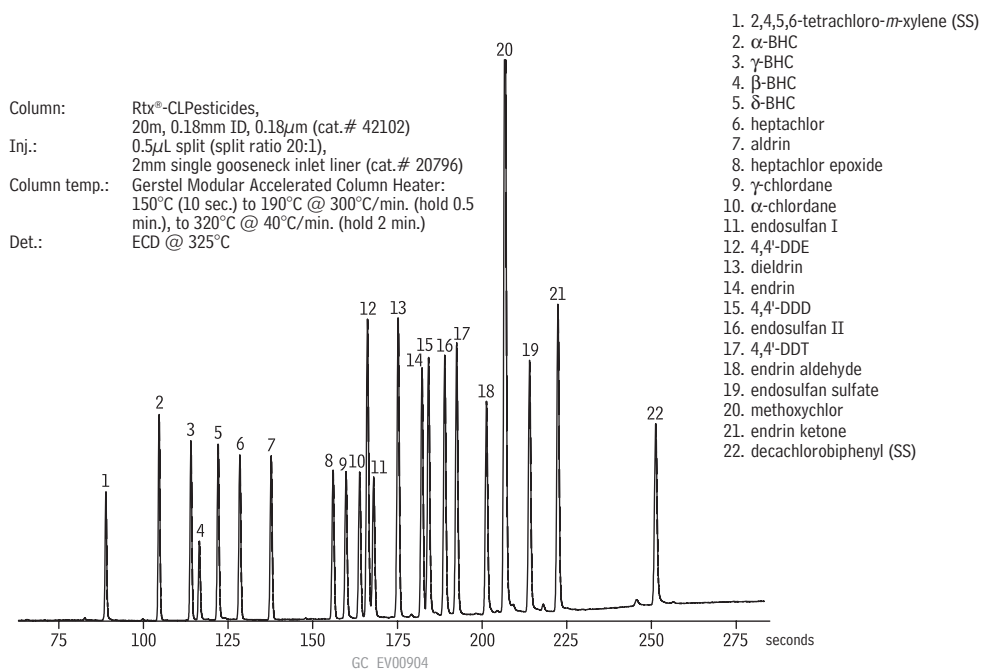


Organochlorine Pesticides

US EPA Method 8081

Rtx®-CLPesticides & Rtx®-CLPesticides2

new!



Sample: Organochlorine Pesticide Mix AB #2 (8-80 μ g/mL each component
in hexane/toluene 1:1, cat.# 32292),
Pesticide Surrogate Mix (200 μ g/mL each component in acetone, cat.# 32000)
Inj.: 0.5 μ L split (split ratio 20:1), 2mm single gooseneck inlet liner (cat.# 20796)
Inj. temp.: 250°C
Carrier gas: helium, constant flow
Flow rate: 1.5mL/min.
Oven temp.: 275°C