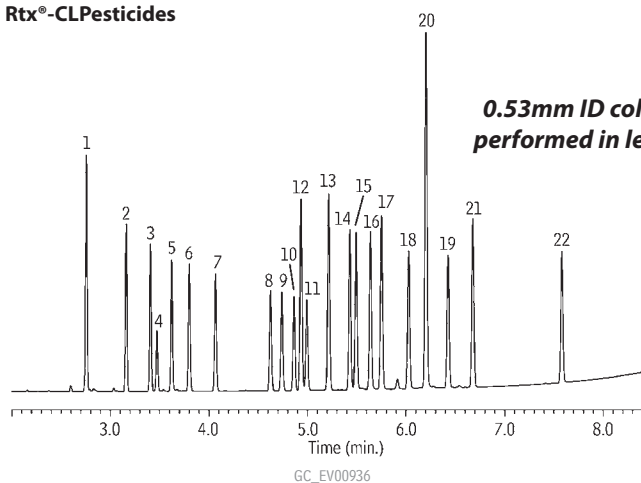


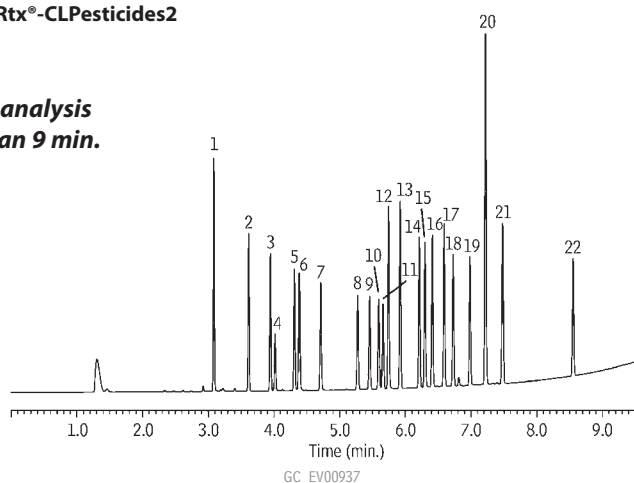
## Organochlorine Pesticide Mix AB #2 Rtx<sup>®</sup>-CLPesticides and Rtx<sup>®</sup>-CLPesticides2

new!

### Rtx<sup>®</sup>-CLPesticides



### Rtx<sup>®</sup>-CLPesticides2



Columns: Rtx<sup>®</sup>-CLPesticides, 30m, 0.53mm ID, 0.50 $\mu$ m (cat.# 11140) and Rtx<sup>®</sup>-CLPesticides2, 30m, 0.53mm ID, 0.42 $\mu$ m (cat.# 11340) with 5m x 0.53mm ID Rxi<sup>®</sup> deactivated guard tubing (cat.# 10054), connected using Siltek<sup>®</sup> Treated Universal "Y" Press-Tight<sup>®</sup> connector (cat.# 20486)

Sample: Organochlorine Pesticide Mix AB #2, 8-80 $\mu$ g/mL each component in hexane/toluene (cat.# 32292), Pesticide Surrogate Mix, 200 $\mu$ g/mL each component in acetone (cat.# 32000)

Inj.: 1.0 $\mu$ L splitless (hold 0.3 min.), 4mm single gooseneck inlet liner (cat.# 20799)

Inj. temp.: 250°C

Carrier gas: helium, constant flow

Linear velocity: 45cm/sec. @ 120°C

Oven temp.: 120°C to 200°C @ 45°C/min. to 230°C @ 12.5°C/min. to 325°C (hold 2 min.) @ 30°C/min.

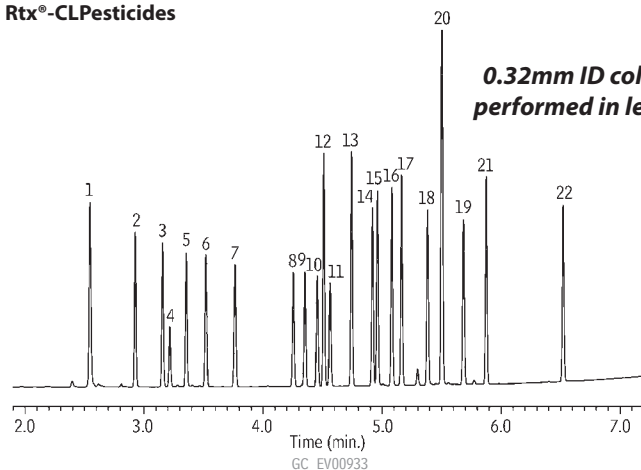
Det.: ECD @ 330°C

- |                                               |                             |
|-----------------------------------------------|-----------------------------|
| 1. 2,4,5,6-tetrachloro- <i>m</i> -xylene (SS) | 12. 4,4'-DDE                |
| 2. $\alpha$ -BHC                              | 13. dieldrin                |
| 3. $\gamma$ -BHC                              | 14. endrin                  |
| 4. $\beta$ -BHC                               | 15. 4,4'-DDD                |
| 5. $\delta$ -BHC                              | 16. endosulfan II           |
| 6. heptachlor                                 | 17. 4,4'-DDT                |
| 7. aldrin                                     | 18. endrin aldehyde         |
| 8. heptachlor epoxide (isomer B)              | 19. endosulfan sulfate      |
| 9. $\gamma$ -chlordane                        | 20. methoxychlor            |
| 10. $\alpha$ -chlordane                       | 21. endrin ketone           |
| 11. endosulfan I                              | 22. decachlorobiphenyl (SS) |

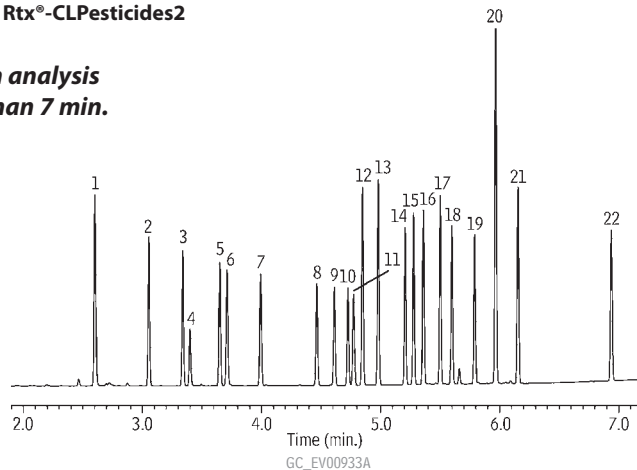
## Organochlorine Pesticide Mix AB #2 Rtx<sup>®</sup>-CLPesticides and Rtx<sup>®</sup>-CLPesticides2

new!

### Rtx<sup>®</sup>-CLPesticides



### Rtx<sup>®</sup>-CLPesticides2



Columns: Rtx<sup>®</sup>-CLPesticides, 30m, 0.32mm ID, 0.32 $\mu$ m (cat.# 11141) and Rtx<sup>®</sup>-CLPesticides2, 30m, 0.32mm ID, 0.25 $\mu$ m (cat.# 11324) with 5m x 0.32mm ID Rxi<sup>®</sup> deactivated guard tubing (cat.# 10039), connected using Deactivated Universal "Y" Press-Tight<sup>®</sup> connector (cat.# 20405-261)

Sample: Organochlorine Pesticide Mix AB #2, 8-80 $\mu$ g/mL each component in hexane/toluene (cat.# 32292), Pesticide Surrogate Mix, 200 $\mu$ g/mL each component in acetone (cat.# 32000)

Inj.: 1.0 $\mu$ L splitless (hold 0.3 min.), 4mm single gooseneck inlet liner (cat.# 20799)

Inj. temp.: 250°C

Carrier gas: helium, constant flow

Linear velocity: 60cm/sec. @ 120°C

Oven temp.: 120°C to 200°C @ 45°C/min. to 230°C @ 15°C/min. to 330°C (hold 2 min.) @ 30°C/min.

Det.: ECD @ 330°C

- |                                               |                             |
|-----------------------------------------------|-----------------------------|
| 1. 2,4,5,6-tetrachloro- <i>m</i> -xylene (SS) | 12. 4,4'-DDE                |
| 2. $\alpha$ -BHC                              | 13. dieldrin                |
| 3. $\gamma$ -BHC                              | 14. endrin                  |
| 4. $\beta$ -BHC                               | 15. 4,4'-DDD                |
| 5. $\delta$ -BHC                              | 16. endosulfan II           |
| 6. heptachlor                                 | 17. 4,4'-DDT                |
| 7. aldrin                                     | 18. endrin aldehyde         |
| 8. heptachlor epoxide (isomer B)              | 19. endosulfan sulfate      |
| 9. $\gamma$ -chlordane                        | 20. methoxychlor            |
| 10. $\alpha$ -chlordane                       | 21. endrin ketone           |
| 11. endosulfan I                              | 22. decachlorobiphenyl (SS) |