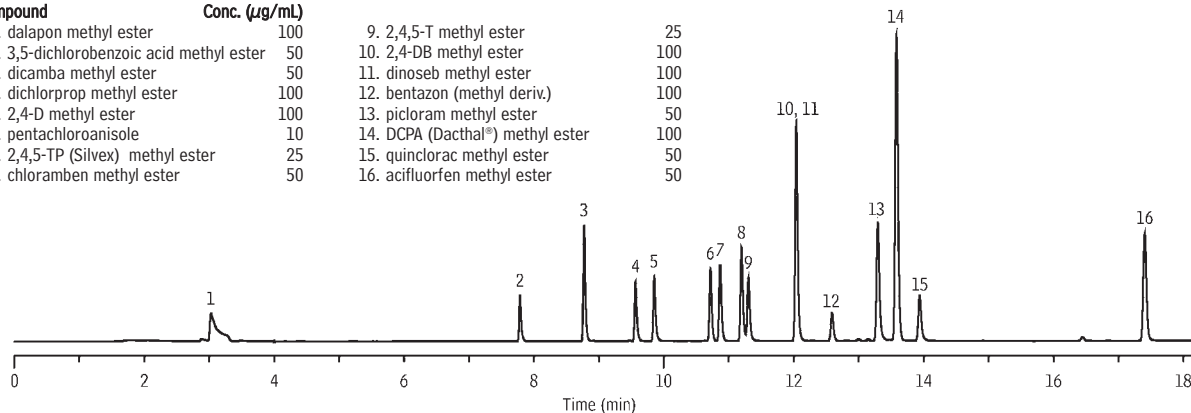


Chlorophenoxyacid Herbicides (methyl esters)

US EPA Method 515 by GC/ECD

Rtx®-440

Compound	Conc. (µg/mL)	Compound	Conc. (µg/mL)
1. dalapon methyl ester	100	9. 2,4,5-T methyl ester	25
2. 3,5-dichlorobenzoic acid methyl ester	50	10. 2,4-DB methyl ester	100
3. dicamba methyl ester	50	11. dinoseb methyl ester	100
4. dichlorprop methyl ester	100	12. bentazon (methyl deriv.)	100
5. 2,4-D methyl ester	100	13. picloram methyl ester	50
6. pentachloroanisole	10	14. DCPA (Dacthal®) methyl ester	100
7. 2,4,5-TP (Silvex) methyl ester	25	15. quinclorac methyl ester	50
8. chloramben methyl ester	50	16. acifluorfen methyl ester	50



GC_EV00756

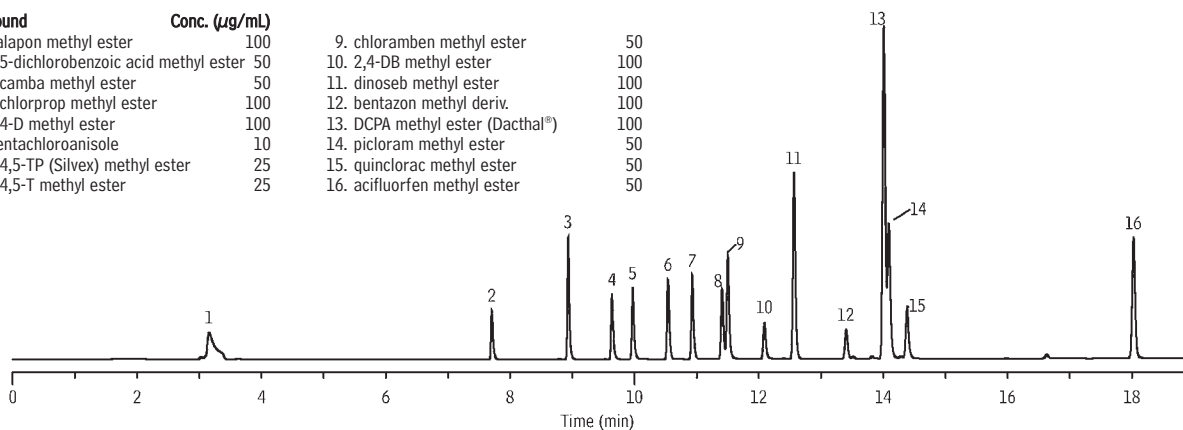
Column: Rtx®-440, 30m, 0.32mm ID, 0.25µm (cat.# 12924)
 Sample: 10-100µg/mL each methyl ester in MTBE (cat.# 32444)
 Inj.: 1.0µL splitless (hold 0.45 min.), 4mm Silitex® double gooseneck splitless inlet liner (cat.# 20784-214.1)
 Inj. temp.: 225°C
 Carrier gas: helium, constant pressure
 Inlet pressure: 10.5psi set @ 70°C
 Oven temp.: 70°C (hold 1 min.) to 210°C @ 20°C/min. (hold 1 min.) to 300°C @ 5°C/min.
 Det.: ECD @ 320°C

Chlorophenoxyacid Herbicides (methyl esters)

US EPA Method 515 by GC/ECD

Rtx®-CLPesticides2

Compound	Conc. (µg/mL)	Compound	Conc. (µg/mL)
1. dalapon methyl ester	100	9. chloramben methyl ester	50
2. 3,5-dichlorobenzoic acid methyl ester	50	10. 2,4-DB methyl ester	100
3. dicamba methyl ester	50	11. dinoseb methyl ester	100
4. dichlorprop methyl ester	100	12. bentazon methyl deriv.	100
5. 2,4-D methyl ester	100	13. DCPA methyl ester (Dacthal®)	100
6. pentachloroanisole	10	14. picloram methyl ester	50
7. 2,4,5-TP (Silvex) methyl ester	25	15. quinclorac methyl ester	50
8. 2,4,5-T methyl ester	25	16. acifluorfen methyl ester	50



GC_EV00755

Column: Rtx®-CLPesticides2, 30m, 0.32mm ID, 0.25µm (cat.# 11324)
 Sample: 10-100µg/mL each methyl ester in MTBE (cat.# 32444)
 Inj.: 1.0µL splitless (hold 0.45 min.), 4mm Silitex® double gooseneck splitless inlet liner (cat.# 20784-214.1)
 Inj. temp.: 225°C
 Carrier gas: helium, constant pressure
 Inlet pressure: 10.5psi set @ 70°C
 Oven temp.: 70°C (hold 1 min.) to 210°C @ 20°C/min. (hold 1 min.) to 300°C @ 5°C/min.
 Det.: ECD @ 320°C