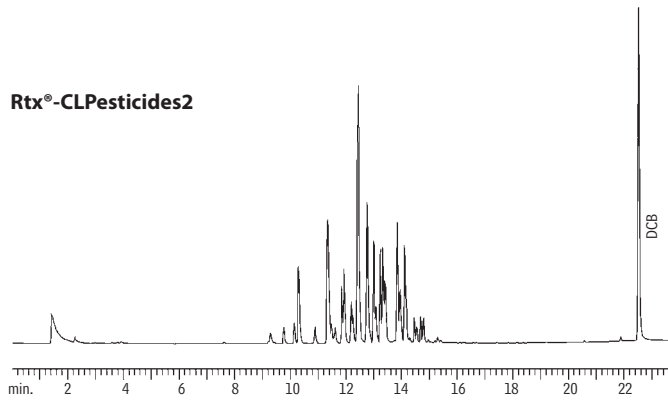
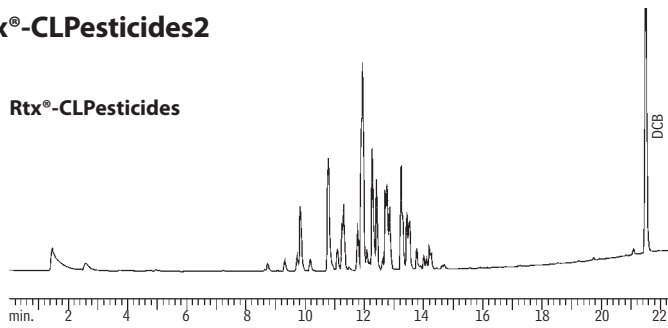


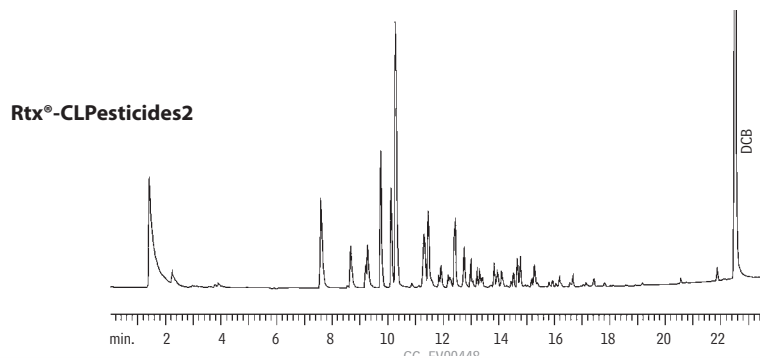
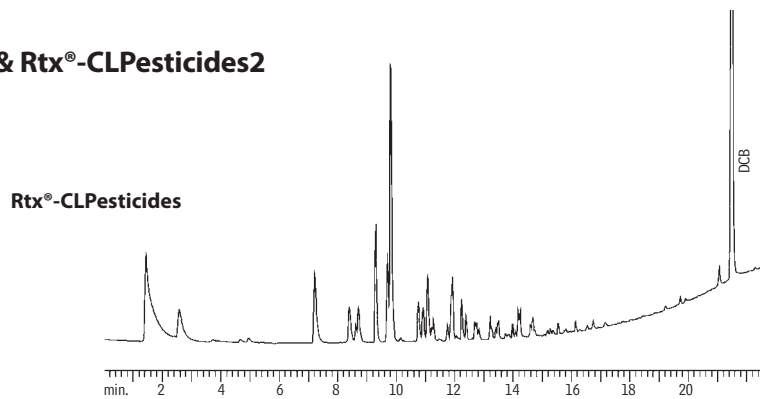
**Aroclor 1016 PCBs
Rtx[®]-CLPesticides & Rtx[®]-CLPesticides2**



GC_EV00440

Columns: Rtx[®]-CLPesticides, 30m, 0.32mm ID, 0.50 μ m (cat.# 11139)
 Rtx[®]-CLPesticides2, 30m, 0.32mm ID, 0.25 μ m (cat.# 11324)
 Inj.: 0.5 μ L direct injection, 160pg on-column concentration
 Oven temp.: 120°C (hold 1 min.) to 300°C @ 9°C/min. (hold 10 min.)
 Inj. temp.: 210°C
 Det.: ECD with anode purge, 310°C
 Carrier gas: helium

**Aroclor 1221 PCBs
Rtx[®]-CLPesticides & Rtx[®]-CLPesticides2**



GC_EV00440