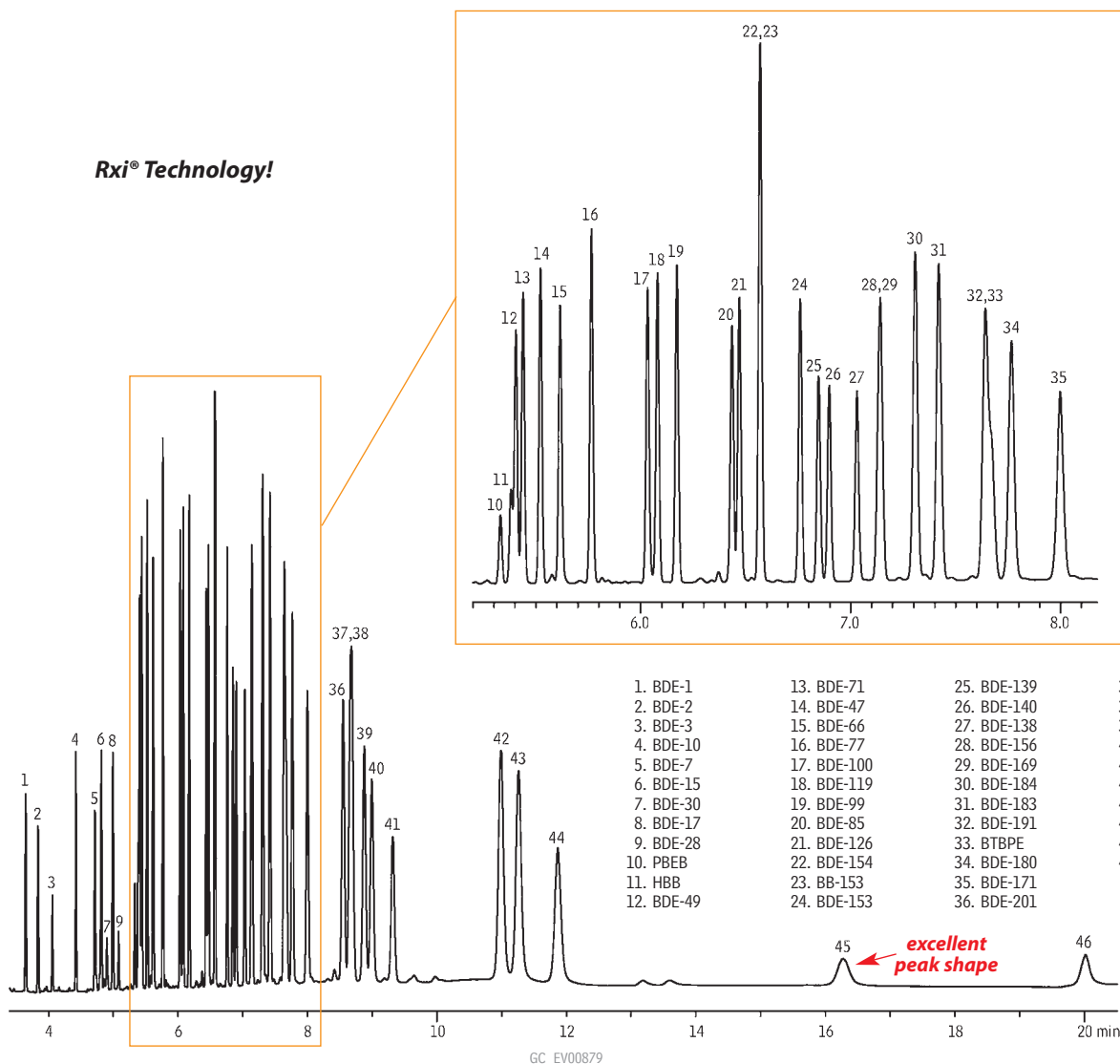


**BFR-PAR Mix**  
**Rxi®-5ms**

**new!**

**Rxi® Technology!**



Column: Rxi®-5ms, 15m, 0.25mm ID, 0.25µm (cat.# 13420)  
 Sample: Wellington BFR-PAR Mix (Wellington Laboratories Inc., Guelph, Ontario, Canada; Wellington cat.# BFR-PAR)  
 Inj.: 1.0µL splitless (hold 1 min.), 4mm Siltek® gooseneck inlet liner (cat.# 20798-214.1)  
 Inj. temp.: 220°C  
 Carrier gas: helium, constant flow  
 Linear velocity: 40cm/sec. @ 100°C  
 Oven temp.: 100°C (hold 1 min.) to 295°C @ 25°C/min. (hold 7 min.)  
 Det.: ECD @ 300°C

Searching for a chromatogram?  
[www.restek.com](http://www.restek.com)

GC APPLICATIONS | ENVIRONMENTAL

