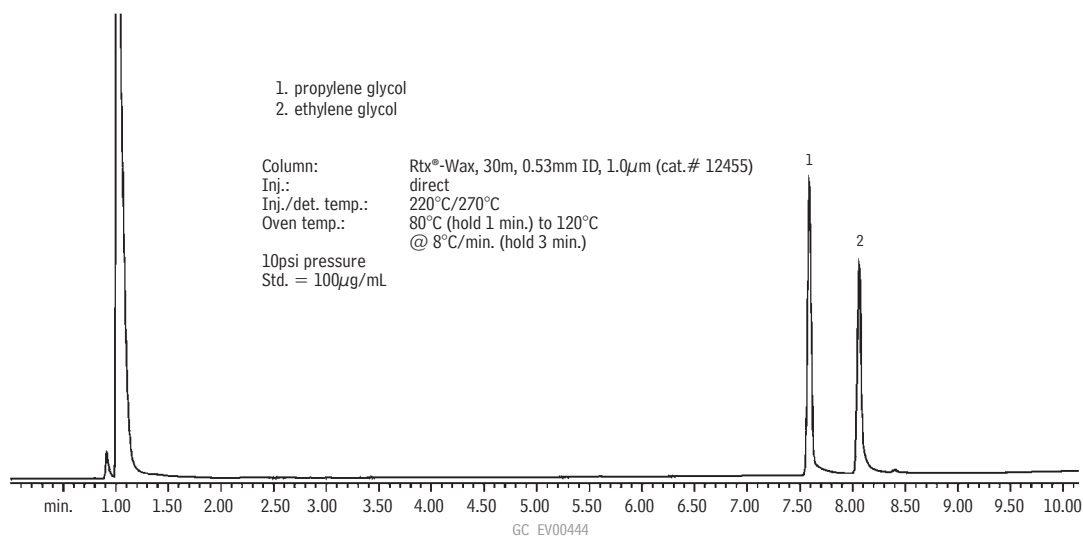
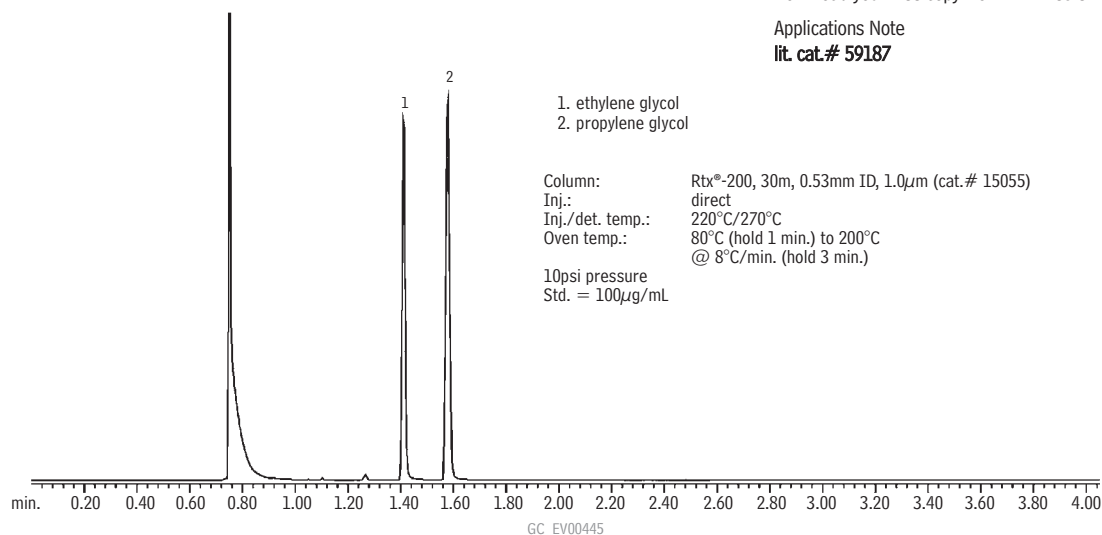


Glycols  
Rtx®-WaxGlycols  
Rtx®-200

## free literature

## Techniques to Optimizing GC Analysis of Ethylene Glycol in Water

*Avoid the problems that aqueous samples can create*

Direct injections of water-based samples, such as samples containing ethylene glycol, can cause problems for chromatographers. This 4-page note alerts analysts to the potential for poor peak shape, sample carryover, and FID flameout, and describes approaches to follow to avoid these problems. With care, detection limits of 1-10ppm ethylene glycol can be attained.

Download your free copy from [www.restek.com](http://www.restek.com).

Applications Note

lit. cat.# 59187