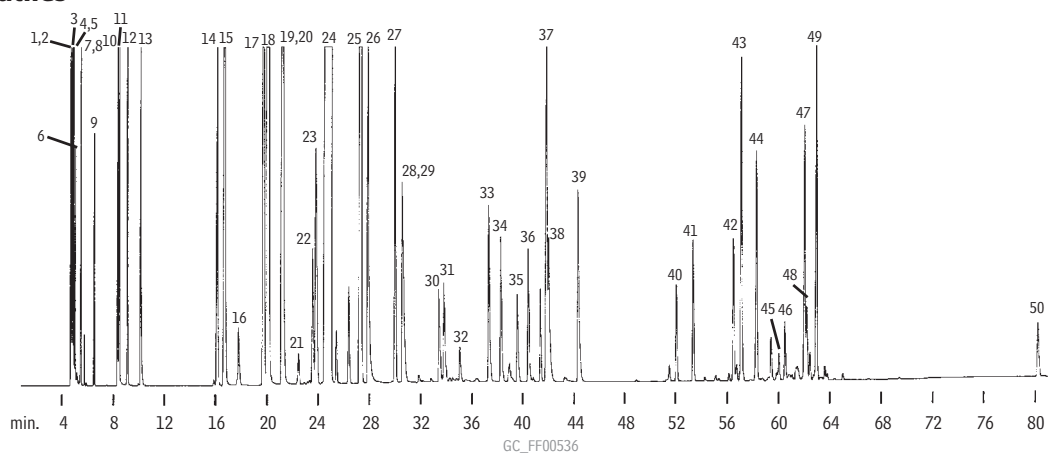


## Flavor Volatiles

Rtx®-1

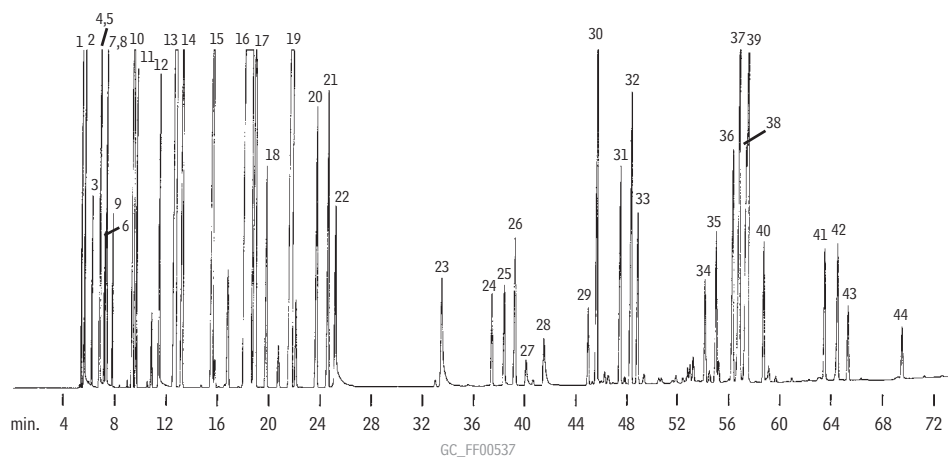


- |                       |                             |                                   |                                     |  |
|-----------------------|-----------------------------|-----------------------------------|-------------------------------------|--|
| 1. methanol           | 11. ethylbutyrate           | 21. $\alpha$ -phellandrene        | 31. <i>trans</i> -limonene monoxide | 41. geranyl acetate                      |
| 2. acetaldehyde       | 12. furfural                | 22. $\alpha$ -terpinene           | 32. citronellal                     | 42. $\alpha$ -ionone                     |
| 3. ethanol            | 13. <i>trans</i> -2-hexenal | 23. <i>p</i> -cymene              | 33. terpinene-4-ol                  | 43. $\beta$ -caryophyllene               |
| 4. acetone            | 14. $\alpha$ -thujene       | 24. $\delta$ -limonene            | 34. $\alpha$ -terpineol             | 44. <i>trans</i> - $\alpha$ -bergamotene |
| 5. isopropyl alcohol  | 15. $\alpha$ -pinene        | 25. $\gamma$ -terpinene           | 35. decanal                         | 45. BHA                                  |
| 6. methylene chloride | 16. camphene                | 26. octanol                       | 36. d & l carveol                   | 46. $\beta$ -ionone                      |
| 7. hexane             | 17. sabinene                | 27. terpinolene                   | 37. neral                           | 47. valencene                            |
| 8. ethyl acetate      | 18. $\beta$ -pinene         | 28. nonanal                       | 38. carvone                         | 48. $\gamma$ -elemene                    |
| 9. ethyl propionate   | 19. octanal                 | 29. linalool                      | 39. geranial                        | 49. $\beta$ -bisabolene                  |
| 10. <i>n</i> -hexanal | 20. myrcene                 | 30. <i>cis</i> -limonene monoxide | 40. neryl acetate                   | 50. nootketone                           |

Column: Rtx®-1, 60m, 0.53mm ID, 0.50 $\mu$ m (cat.# 10143)  
 Sample: 0.8 $\mu$ L split injection of a flavor volatiles test mix  
 Oven temp.: 70°C (hold 15 min.) to 190°C @ 2°C/min. (hold 5 min.)  
 Inj./det. temp.: 220°C/260°C  
 Carrier gas: helium  
 Linear velocity: 20cm/sec. set @ 70°C  
 FID sensitivity: 64 x 10<sup>-11</sup> AFS  
 Split ratio: 20:1

## Flavor Volatiles

Stabilwax®



- |                       |                             |                                   |  |                      |
|-----------------------|-----------------------------|-----------------------------------|--|----------------------|
| 1. hexane             | 10. $\alpha$ -pinene        | 19. $\gamma$ -terpinene           | 28. decanal                              | 37. valencene        |
| 2. acetaldehyde       | 11. ethylbutyrate           | 20. <i>p</i> -cymene              | 29. linalool                             | 38. geranial         |
| 3. acetone            | 12. <i>n</i> -hexanal       | 21. terpinolene                   | 30. octanol                              | 39. carvone          |
| 4. methanol           | 13. $\beta$ -pinene         | 22. octanal                       | 31. <i>trans</i> - $\alpha$ -bergamotene | 40. geranyl acetate  |
| 5. ethyl acetate      | 14. sabinene                | 23. nonanal                       | 32. $\beta$ -caryophyllene               | 41. d/l carveol      |
| 6. isopropyl alcohol  | 15. myrcene                 | 24. <i>cis</i> -limonene monoxide | 33. terpinene-4-ol                       | 42. $\alpha$ -ionone |
| 7. ethanol            | 16. $\delta$ -limonene      | 25. <i>trans</i> -limonene        | 34. neral                                | 43. d/l carveol      |
| 8. methylene chloride | 17. 1,8-cineole             | 26. furfural                      | 35. $\alpha$ -terpineol                  | 44. $\beta$ -ionone  |
| 9. ethyl propionate   | 18. <i>trans</i> -2-hexenal | 27. citronellal                   | 36. neryl acetate                        |                      |

Column: Stabilwax®, 60m, 0.53mm ID, 0.50 $\mu$ m (cat.# 10643)  
 Sample: 0.8 $\mu$ L split injection of a flavor volatiles test mix  
 Oven temp.: 70°C (hold 15 min.) to 190°C @ 2°C/min. (hold 5 min.)  
 Inj./det. temp.: 220°C/260°C  
 Carrier gas: helium  
 Linear velocity: 20cm/sec. set @ 70°C  
 FID sensitivity: 64 x 10<sup>-11</sup> AFS  
 Split ratio: 20:1