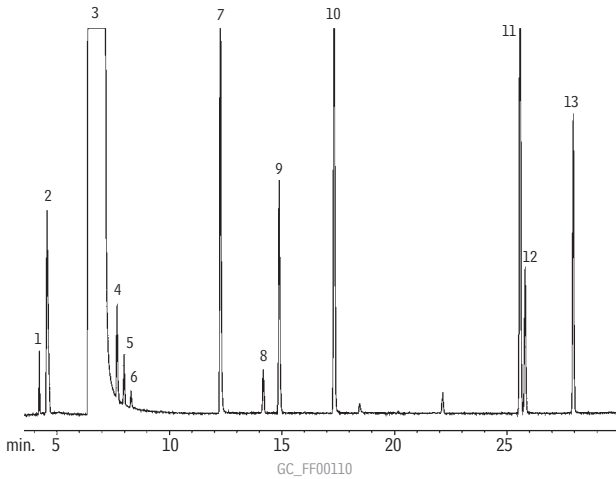


**Rum
Rtx®-1301**

- | | |
|------------------|-------------------------|
| 1. acetaldehyde | 9. sec-butanol |
| 2. methanol | 10. isobutanol |
| 3. ethanol | 11. isoamyl alcohol |
| 4. acetone | 12. active amyl alcohol |
| 5. ethyl formate | 13. n-amyl alcohol |
| 6. isopropanol | |
| 7. n-propanol | |
| 8. ethyl acetate | |

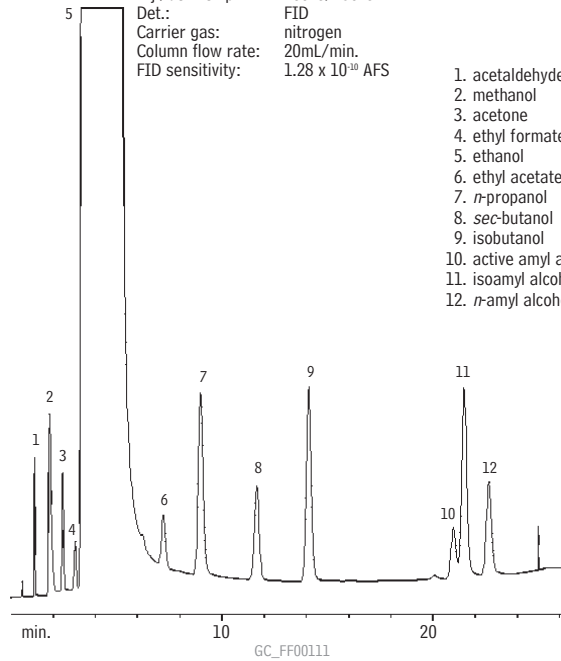


Column: Rtx®-1301, 60m, 0.25mm ID, 1.4µm (cat.# 16016)
 Inj.: 1.0µL split injection using a Cyclosplitter® inlet liner (cat.# 20706)
 Conc.: neat
 Oven temp.: 35°C (hold 5 min.) to 100°C @ 1°C/min.
 Inj./det. temp.: 150°C/200°C
 Carrier gas: hydrogen @ 40cm/sec.
 Split ratio: 100:1

**Rum
CarboBlack B**

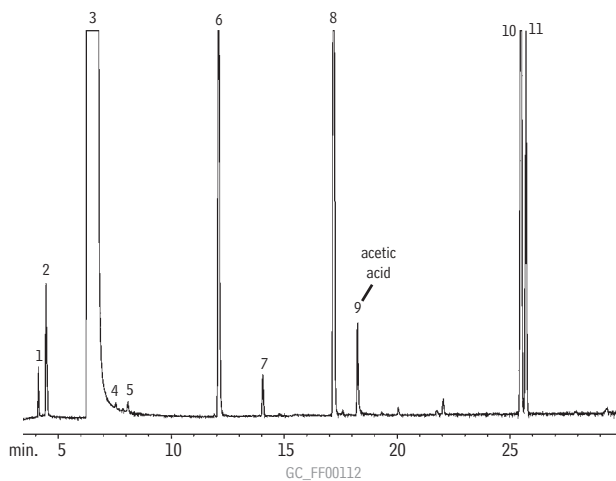
Column: 5% Carbowax® 20M 80/120 CarboBlack B, 2m, 1/8" OD, 2mm ID SilcoSmooth™ tubing (cat.# 80105)
 Inj.: 0.5µL on-column injection, neat
 Oven temp.: 65°C (hold 5 min.) to 150°C @ 4°C/min.
 Inj./det. temp.: 200°C/250°C
 Det.: FID
 Carrier gas: nitrogen
 Column flow rate: 20mL/min.
 FID sensitivity: 1.28 x 10¹⁰ AFS

1. acetaldehyde
2. methanol
3. acetone
4. ethyl formate
5. ethanol
6. ethyl acetate
7. n-propanol
8. sec-butanol
9. isobutanol
10. active amyl alcohol
11. isoamyl alcohol
12. n-amyl alcohol



**Scotch
Rtx®-1301**

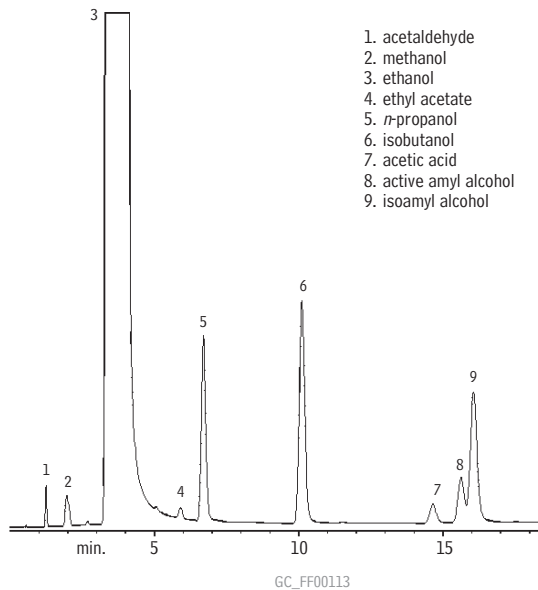
- | | |
|-----------------|-------------------------|
| 1. acetaldehyde | 7. ethyl acetate |
| 2. methanol | 8. isobutanol |
| 3. ethanol | 9. acetic acid |
| 4. acetone | 10. isoamyl alcohol |
| 5. isopropanol | 11. active amyl alcohol |
| 6. n-propanol | |



Column: Rtx®-1301, 60m, 0.25mm ID, 1.4µm (cat.# 16016)
 Inj.: 1.0µL split injection using a Cyclosplitter® inlet liner (cat.# 20706)
 Conc.: neat
 Oven temp.: 35°C (hold 5 min.) to 100°C @ 1°C/min.
 Inj./det. temp.: 150°C/200°C
 Carrier gas: hydrogen @ 40cm/sec.
 Split ratio: 100:1

**Scotch
CarboBlack B**

1. acetaldehyde
2. methanol
3. ethanol
4. ethyl acetate
5. n-propanol
6. isobutanol
7. acetic acid
8. active amyl alcohol
9. isoamyl alcohol



Column: 5% Carbowax® 20M 80/120 CarboBlack B, 2m, 1/8" OD, 2mm ID SilcoSmooth™ tubing (cat.# 80105)
 Inj.: 0.5µL on-column injection, neat
 Oven temp.: 70°C to 150°C @ 4°C/min.
 Inj./det. temp.: 200°C/250°C
 Det.: FID
 Carrier gas: nitrogen
 Column flow rate: 20mL/min.
 FID sensitivity: 1.28 x 10¹⁰ AFS

