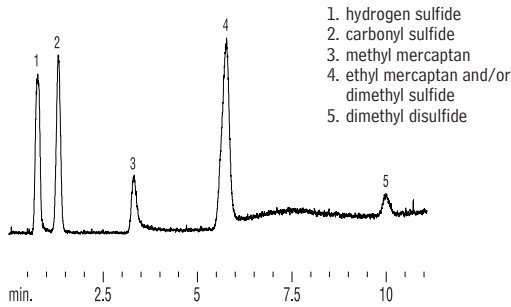


Sulfur Compounds in Beverage Grade CO₂
Rt™-XLSulfur



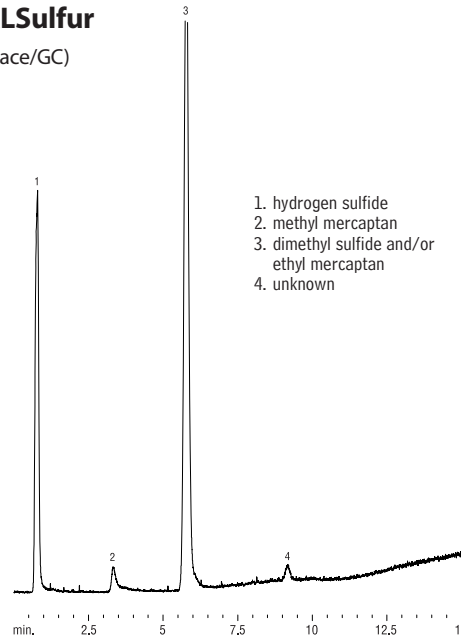
- 1. hydrogen sulfide
- 2. carbonyl sulfide
- 3. methyl mercaptan
- 4. ethyl mercaptan and/or dimethyl sulfide
- 5. dimethyl disulfide

GC_FF00491

Column: Rt™-XLSulfur, 100/120 mesh, 1m, 0.75mm ID Sulfinert® tubing (cat.# 19806)
 Conc.: sulfur standard @ 20ppb each in CO₂
 Inj.: 1cc sample loop, 6-port Valco® valve
 Carrier gas: helium
 Flow rate: 10mL/min. @ ambient temp.
 Oven temp.: 60°C to 260°C @ 15°C/min. (hold 5 min.)
 Det. sensitivity: SCD, attn. x 1
 Det. temp.: 800°C

Sulfur Compounds in Beer
Rt™-XLSulfur

(Headspace/GC)



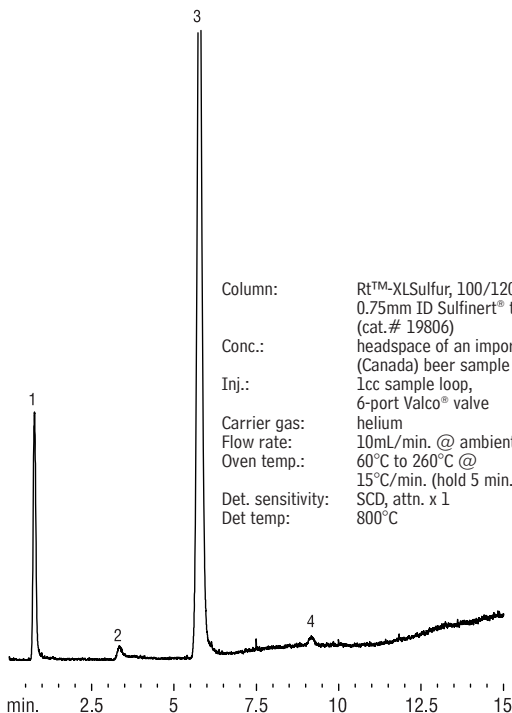
- 1. hydrogen sulfide
- 2. methyl mercaptan
- 3. dimethyl sulfide and/or ethyl mercaptan
- 4. unknown

GC_FF00494

Column: Rt™-XLSulfur, 100/120 mesh, 1m, 0.75mm ID Sulfinert® tubing (cat.# 19806)
 Conc.: headspace of a domestic (US) beer sample
 Inj.: 1cc sample loop, 6-port Valco® valve
 Carrier gas: helium
 Flow rate: 10mL/min. @ ambient temp.
 Oven temp.: 60°C to 260°C @ 15°C/min. (hold 5 min.)
 Det. sensitivity: SCD, attn. x 1
 Det. temp.: 800°C

Sulfur Compounds in Beer
Rt™-XLSulfur

(Headspace/GC)



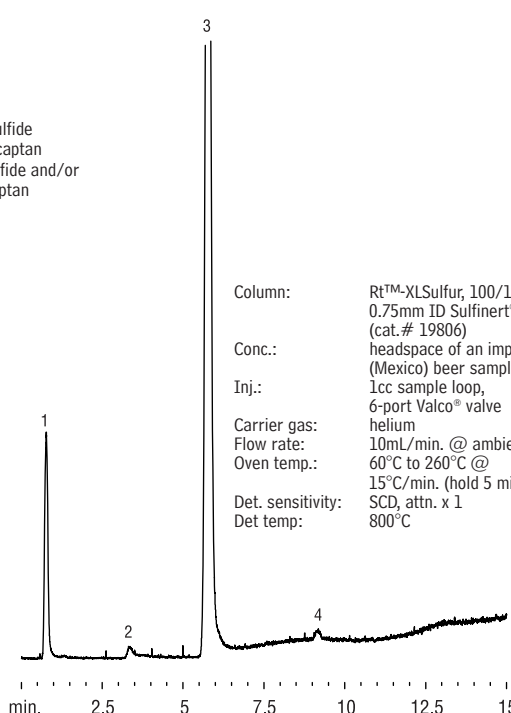
- 1. hydrogen sulfide
- 2. methyl mercaptan
- 3. dimethyl sulfide and/or ethyl mercaptan
- 4. unknown

GC_FF00487

Column: Rt™-XLSulfur, 100/120 mesh, 1m, 0.75mm ID Sulfinert® tubing (cat.# 19806)
 Conc.: headspace of an imported (Canada) beer sample
 Inj.: 1cc sample loop, 6-port Valco® valve
 Carrier gas: helium
 Flow rate: 10mL/min. @ ambient temp.
 Oven temp.: 60°C to 260°C @ 15°C/min. (hold 5 min.)
 Det. sensitivity: SCD, attn. x 1
 Det temp.: 800°C

Sulfur Compounds in Beer
Rt™-XLSulfur

(Headspace/GC)



Column: Rt™-XLSulfur, 100/120 mesh, 1m, 0.75mm ID Sulfinert® tubing (cat.# 19806)
 Conc.: headspace of an imported (Mexico) beer sample
 Inj.: 1cc sample loop, 6-port Valco® valve
 Carrier gas: helium
 Flow rate: 10mL/min. @ ambient temp.
 Oven temp.: 60°C to 260°C @ 15°C/min. (hold 5 min.)
 Det. sensitivity: SCD, attn. x 1
 Det temp.: 800°C

GC_FF00483

