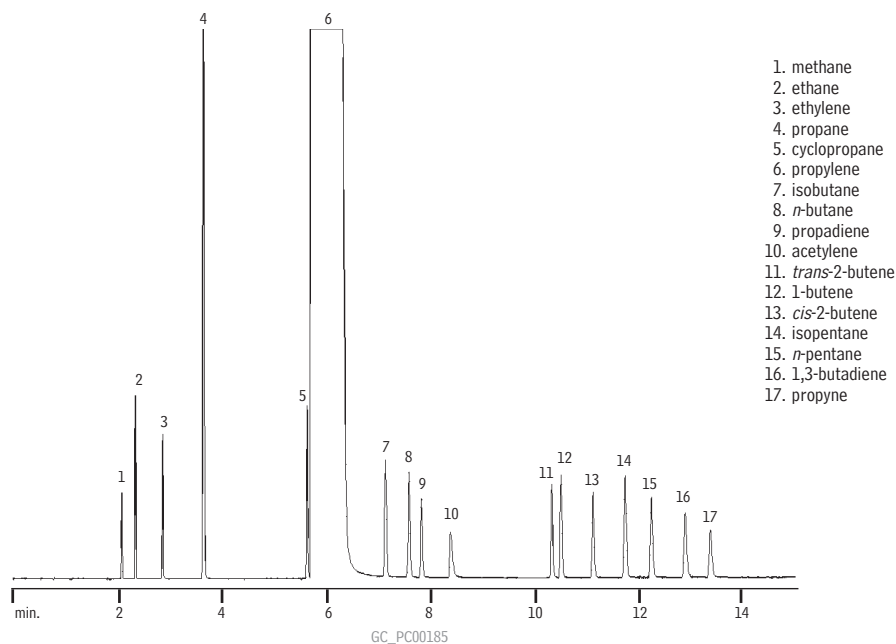


## Propylene Purity

### Rt™-Alumina

(PLOT)



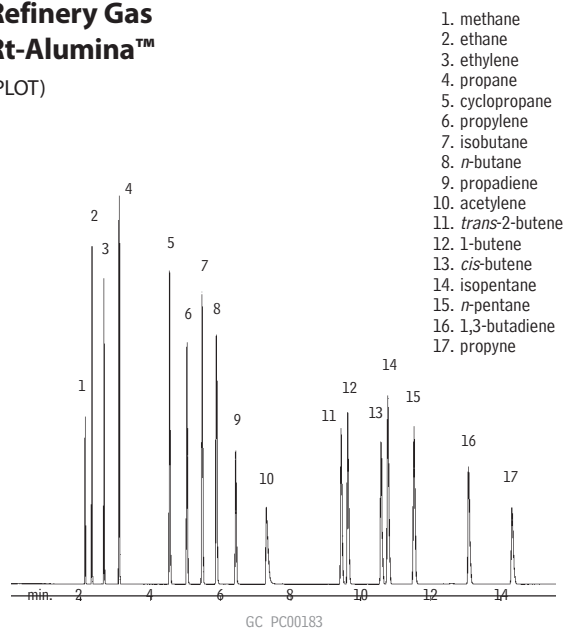
1. methane
2. ethane
3. ethylene
4. propane
5. cyclopropane
6. propylene
7. isobutane
8. *n*-butane
9. propadiene
10. acetylene
11. *trans*-2-butene
12. 1-butene
13. *cis*-2-butene
14. isopentane
15. *n*-pentane
16. 1,3-butadiene
17. propyne

Column: Rt™-Alumina, 50m, 0.53mm ID (cat.# 19701)  
 Inj.: 100µL hydrocarbon mix (gas-tight syringe)  
 Oven temp.: 40°C (hold 3 min.) to 120°C @ 10°C/min. (hold 5 min.)  
 Inj./det. temp.: 200°C  
 Carrier gas: helium  
 Linear velocity: 37.5cm/sec. set @ 80°C  
 Split flow: 60mL/min.  
 FID sensitivity: 1.28 x 10<sup>10</sup> AFS

## Refinery Gas

### Rt-Alumina™

(PLOT)



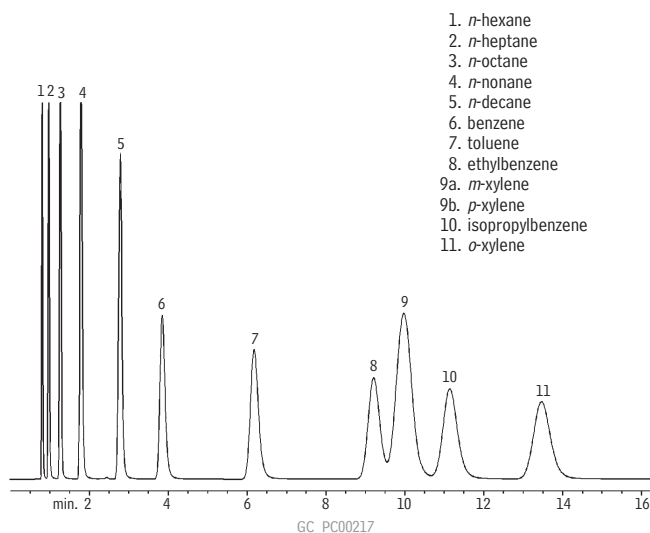
1. methane
2. ethane
3. ethylene
4. propane
5. cyclopropane
6. propylene
7. isobutane
8. *n*-butane
9. propadiene
10. acetylene
11. *trans*-2-butene
12. 1-butene
13. *cis*-butene
14. isopentane
15. *n*-pentane
16. 1,3-butadiene
17. propyne

Column: Rt™-Alumina, 50m, 0.53mm ID (cat.# 19701)  
 Inj.: 100µL hydrocarbon mix split injection, 1000ppm (gas-tight syringe)  
 Oven temp.: 40°C to 120°C @ 5°C/min. (hold 5 min.)  
 Inj./det. temp.: 200°C  
 Carrier gas: helium  
 Linear velocity: 37.5cm/sec. set @ 80°C (5.0mL/min.)  
 Split flow: 60mL/min.  
 FID sensitivity: 1.28 x 10<sup>10</sup> AFS

## Aromatics, Aliphatics

### 10% TCEP 100/120 Chromosorb® PAW

(packed)



1. *n*-hexane
2. *n*-heptane
3. *n*-octane
4. *n*-nonane
5. *n*-decane
6. benzene
7. toluene
8. ethylbenzene
- 9a. *m*-xylene
- 9b. *p*-xylene
10. isopropylbenzene
11. *o*-xylene

Column: 10% TCEP on 100/120 Chromosorb® PAW, 2.5m, 1/8" OD, 2mm ID SilcoSmooth™ tubing (cat.# 80126)  
 Sample size: 0.1mL neat  
 Oven temp.: 80°C  
 Inj./det. temp.: 200°C/250°C  
 Carrier gas: nitrogen  
 Flow rate: 20mL/min.  
 FID sensitivity: 128 x 10<sup>10</sup> AFS