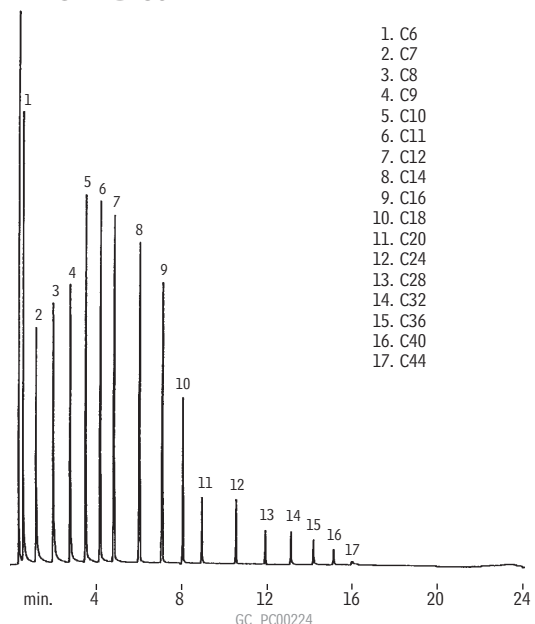


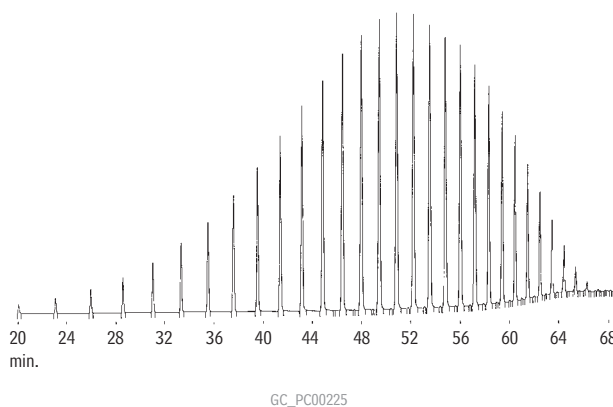
Simulated Distillation (Standard Calibration) MXT®-1 Sim Dist



1. C6
2. C7
3. C8
4. C9
5. C10
6. C11
7. C12
8. C14
9. C16
10. C18
11. C20
12. C24
13. C28
14. C32
15. C36
16. C40
17. C44

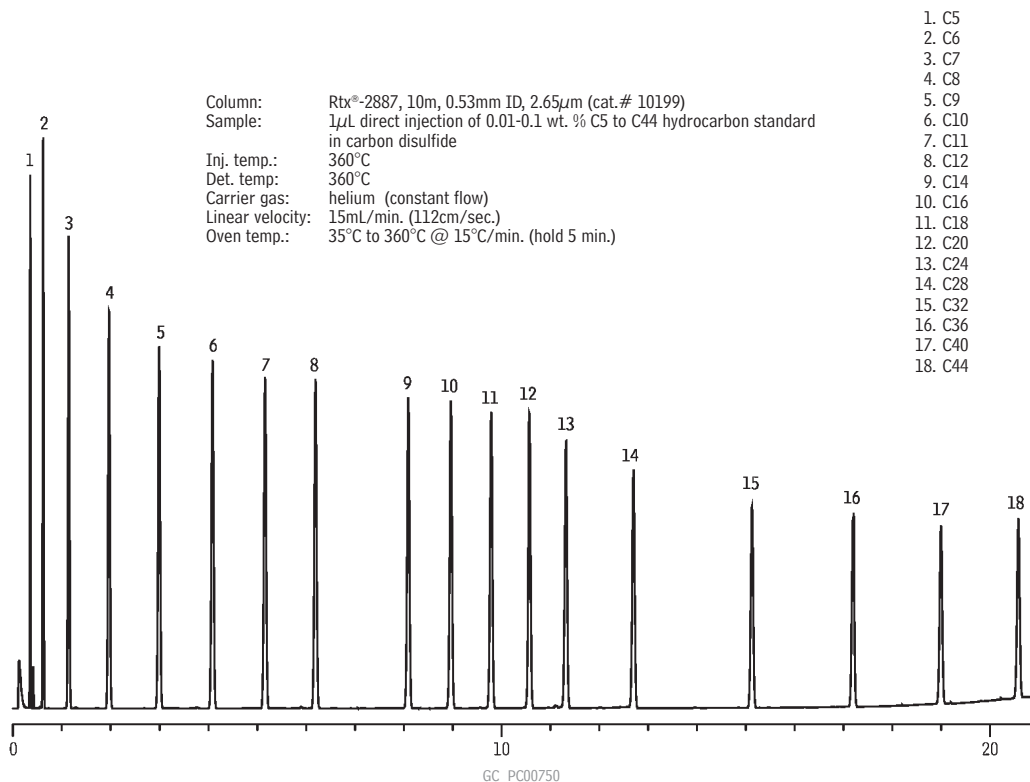
Column: MXT®-1 Sim Dist, 6m, 0.53mm ID, 0.15 μ m (cat.# 70101)
 Sample: Wet needle on-column injection of ASTM D2887 standard
 Oven temp.: -12°C to 430°C @ 20°C/min.
 Inj./det. temp.: -17°C to 433°C/430°C
 Carrier gas: hydrogen
 Linear velocity: 40cm/sec.
 FID sensitivity: 128 x 10¹¹ AFS

Simulated Distillation (High-Temperature) MXT®-500 Sim Dist



Column: MXT®-500 Sim Dist, 6m, 0.53mm ID, 0.15 μ m (cat.# 70104)
 Sample: cold on-column injection of Polywax® 655 in CS₂
 Oven temp.: 40°C to 430°C @ 6°C/min.
 Carrier gas: helium
 Linear velocity: 40cm/sec.
 FID sensitivity: 2 x 10¹¹ AFS

Simulated Distillation Rtx®-2887



Column: Rtx®-2887, 10m, 0.53mm ID, 2.65 μ m (cat.# 10199)
 Sample: 1 μ L direct injection of 0.01-0.1 wt. % C5 to C44 hydrocarbon standard in carbon disulfide
 Inj. temp.: 360°C
 Det. temp.: 360°C
 Carrier gas: helium (constant flow)
 Linear velocity: 15mL/min. (112cm/sec.)
 Oven temp.: 35°C to 360°C @ 15°C/min. (hold 5 min.)

1. C5
2. C6
3. C7
4. C8
5. C9
6. C10
7. C11
8. C12
9. C14
10. C16
11. C18
12. C20
13. C24
14. C28
15. C32
16. C36
17. C40
18. C44