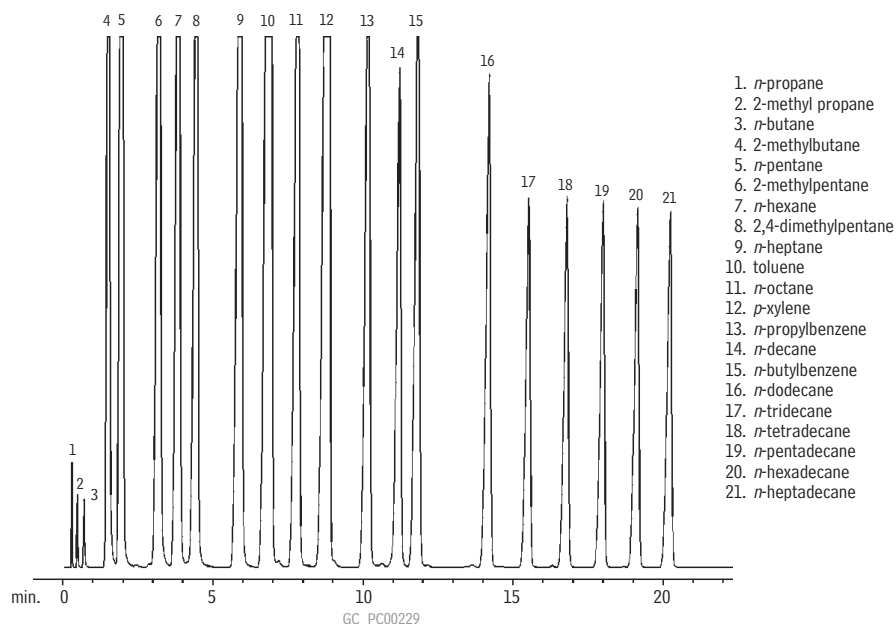


## Simulated Distillation (ASTM D-3710 Calibration)

### Rtx®-1 SimDist 2887

(packed)

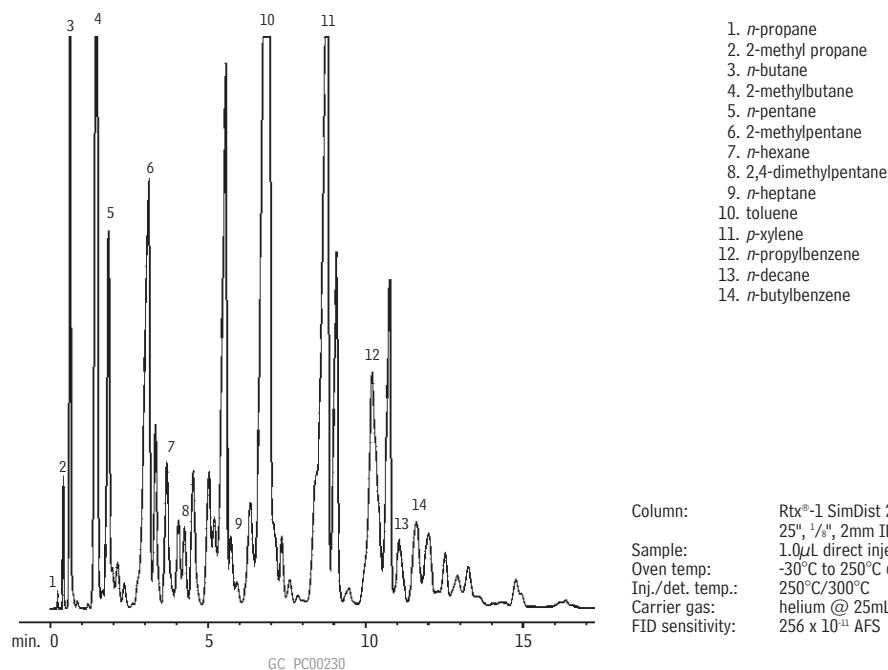


Column: Rtx®-1 SimDist 2887, SilcoSmooth™ stainless steel, 25', 1/8", 2mm ID (cat.# 80000)  
 Sample: D-3710 Calibration Mix, C3, C4, C16, & C17 added  
 Oven temp: -30°C to 250°C @ 10°C/min.  
 Inj./det. temp.: 250°C/300°C  
 Carrier gas: helium @ 25mL/min.  
 FID sensitivity: 256 x 10<sup>-11</sup> AFS

## Simulated Distillation (ASTM D-3710, Gasoline)

### Rtx®-1 SimDist 2887

(packed)



Column: Rtx®-1 SimDist 2887, SilcoSmooth™ stainless steel, 25', 1/8", 2mm ID (cat.# 80000)  
 Sample: 1.0µL direct injection of unleaded gasoline (ASTM D-2887)  
 Oven temp: -30°C to 250°C @ 10°C/min.  
 Inj./det. temp.: 250°C/300°C  
 Carrier gas: helium @ 25mL/min.  
 FID sensitivity: 256 x 10<sup>-11</sup> AFS