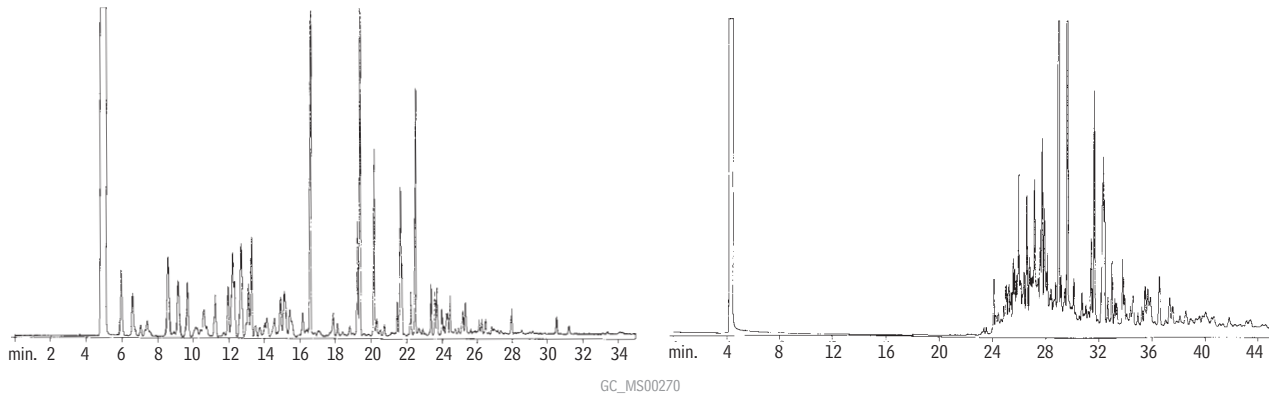


Unleaded Gasoline  
Rtx®-1

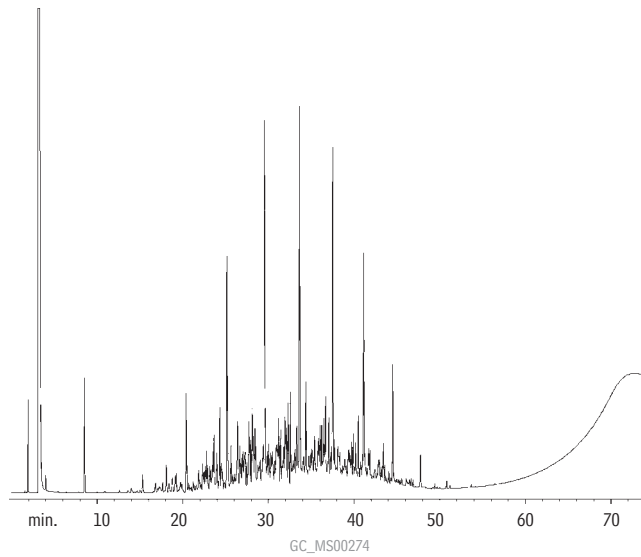
Unweathered

99% Weathered



Column: Rtx®-1, 30m, 0.53mm ID, 1.50µm (cat.# 10170)  
 Oven temp.: 40°C (hold 3 min.) to 75°C @ 15°C/min. to 275°C @ 20°C/min. (hold 5 min.)  
 Inj./det. temp.: 250°C/285°C  
 Carrier gas: hydrogen  
 Linear velocity: 50cm/sec. set @ 40°C  
 FID sensitivity: 4.10 x 10<sup>9</sup> AFS  
 Split ratio: 30:1

Kerosene  
Rtx®-1



Column: Rtx®-1, 30m, 0.32mm ID, 1.5µm (cat.# 10169)  
 Sample: 1.0µL split injection of a kerosene standard (cat.# 31094)  
 Conc.: 5000µg/mL  
 Oven temp.: 40°C (hold 5 min.) to 300°C @ 4°C/min. (hold 5 min.)  
 Inj./det. temp.: 275°C/300°C  
 Carrier gas: helium  
 Linear velocity: 30cm/sec. set @ 40°C  
 Split ratio: 30:1