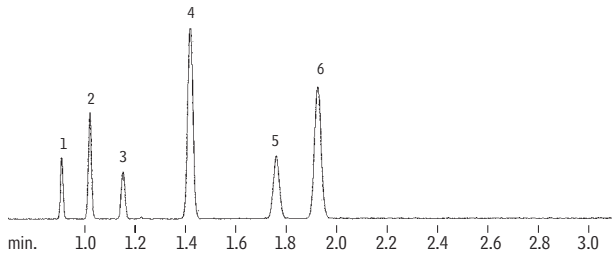


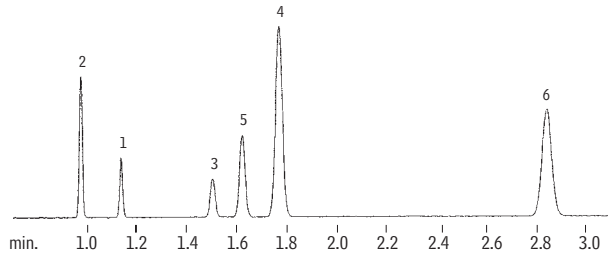
Blood Alcohol
Rtx®-BAC1 & Rtx®-BAC2 (0.32mm ID Columns)

(headspace analysis)

- | | |
|-----------------|-----------|
| 1. methanol | Conc. w/v |
| 2. acetaldehyde | 0.1% |
| 3. ethanol | 0.2% |
| 4. isopropanol | 0.2% |
| 5. acetone | 0.1% |
| 6. n-propanol | 0.01% |
| | 0.1% |



Rtx®-BAC1, 30m, 0.32mm ID, 1.8µm (cat.# 18003)



Rtx®-BAC2, 30m, 0.32mm ID, 1.2µm (cat.# 18002)

GC_PH00241

Dual-column analysis using a two-hole ferrule.

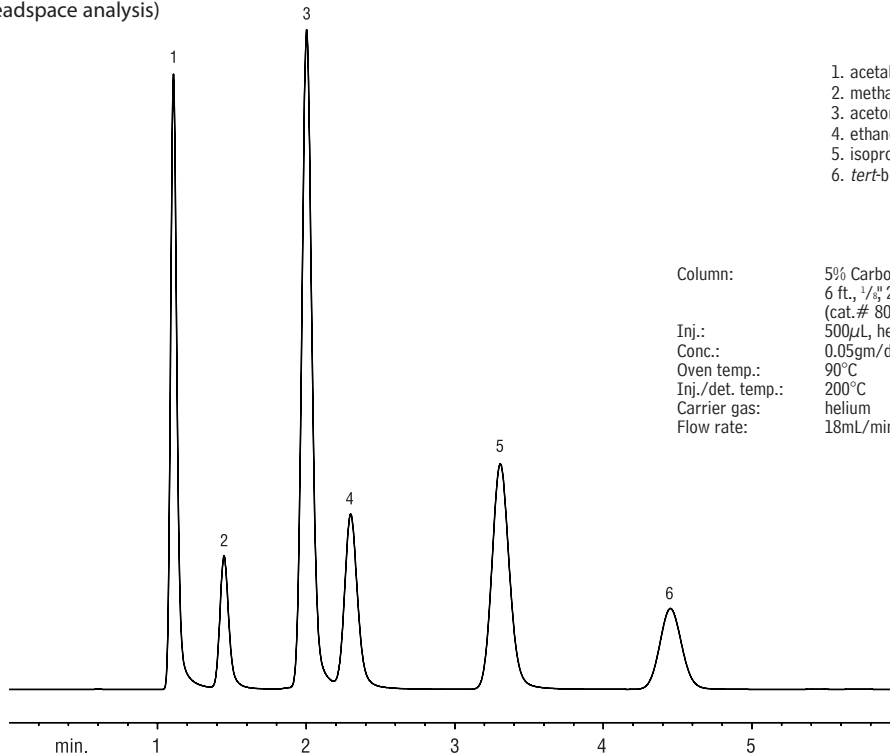
Sample: 1.0mL headspace sample of a blood alcohol mix on a PerkinElmer HS 40 headspace autosampler

Oven temp.: 40°C
 Inj. temp.: 200°C
 Carrier gas: helium
 Sample equilibration: 70°C, 15 min.
 Vial pressure: 30psi
 Vial pressurization time: 0.15 min.

Vial sampling time: 0.01 min.
 Transfer line: 0.32mm ID Hydroguard™ fused silica tubing
 Transfer line temp.: 200°C
 Injection port sleeve: 2mm ID
 Split flow: 20mL/min.

Blood Alcohol
5% Carbowax® 20M on CarboBlack B

(packed; headspace analysis)



1. acetaldehyde
2. methanol
3. acetone
4. ethanol
5. isopropanol
6. *tert*-butanol

Column: 5% Carbowax® 20M on 80/120 CarboBlack B, 6 ft., 1/8" 2.0mm ID SilcoSmooth™ tubing (cat.# 80105)
 Inj.: 500µL, headspace
 Conc.: 0.05gm/dL
 Oven temp.: 90°C
 Inj./det. temp.: 200°C
 Carrier gas: helium
 Flow rate: 18mL/min.

