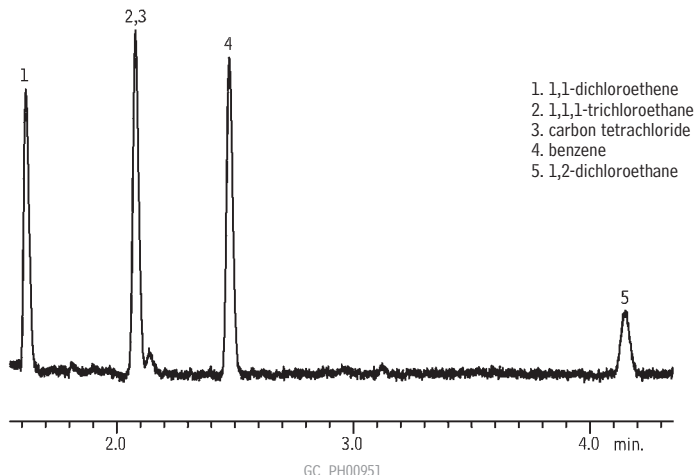


Residual Solvents Class 1

Stabilwax® (G16)

new!



1. 1,1-dichloroethene
2. 1,1,1-trichloroethane
3. carbon tetrachloride
4. benzene
5. 1,2-dichloroethane

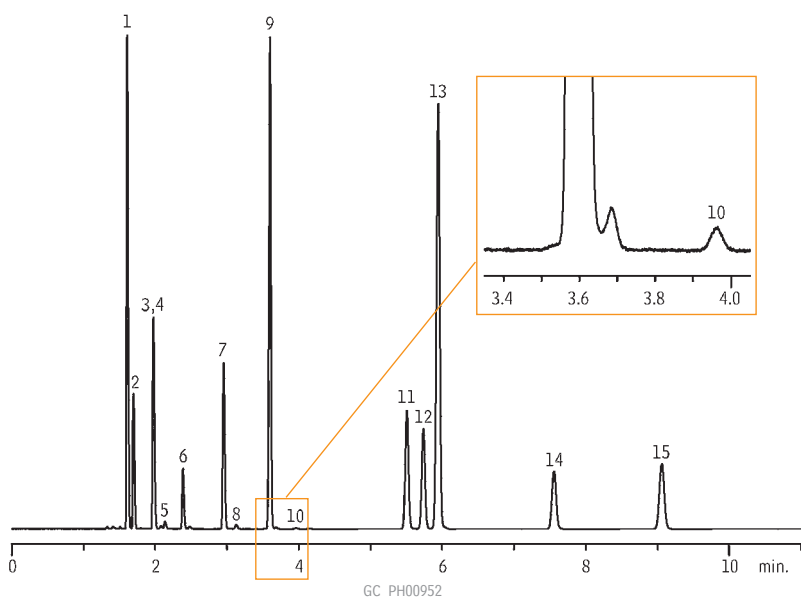
GC_PH00951

Column:	Stabilwax®, 30m, 0.32mm ID, 0.25µm (cat.# 10624)	Headspace Conditions
Sample:	USP Stock Mixture USP <467> Residual Solvents Class 1 Mix (cat.# 36279) in 20mL headspace vial (cat.# 24685), water diluent	Instrument: Overbrook Scientific HT200H
Inj.:	headspace injection (split ratio 1:5), 2mm splitless liner IP deactivated (cat.# 20712)	Syringe temp.: 100°C
Inj. temp.:	140°C	Sample temp.: 80°C
Carrier gas:	helium, constant flow	Sample equil. time.: 45 min.
Flow rate:	2.15mL/min., 35.2cm/sec.	Injection vol.: 1.0mL
Oven temp.:	50°C for 20 min. to 165°C @ 6°C/min. (hold for 20 min.)	Injection speed: setting 8
Det.:	FID @ 250°C	Injection dwell: 5 sec.

Residual Solvents Class 2

Stabilwax® (G16)

new!



1. cyclohexane
2. methylcyclohexane
3. *trans*-1,2-dichloroethene
4. tetrahydrofuran
5. methanol
6. dichloromethane
7. *cis*-1,2-dichloroethene
8. acetonitrile
9. toluene
10. 1,4-dioxane
11. ethyl benzene
12. *p*-xylene
13. *m*-xylene
14. *o*-xylene
15. chlorobenzene

Column:	Stabilwax®, 30m, 0.32mm ID, 0.25µm (cat.# 10624)
Sample:	USP Stock Standard Residual Solvents Class 2 Mix A (cat.# 36271) in 20mL headspace vial (cat.# 24685), water diluent
Inj.:	headspace injection (split ratio 1:5), 2mm splitless liner IP deactivated (cat.# 20712)
Inj. temp.:	140°C
Carrier gas:	helium, constant flow
Flow rate:	2.15mL/min., 35.2cm/sec.
Oven temp.:	50°C for 20 min. to 165°C @ 6°C/min. (hold for 20 min.)
Det.:	FID @ 250°C
Headspace Conditions	
Instrument:	Overbrook Scientific HT200H
Syringe temp.:	100°C
Sample temp.:	80°C
Sample equil. time.:	45 min.
Injection vol.:	1.0mL
Injection speed:	setting 8
Injection dwell:	5 sec.

GC_PH00952