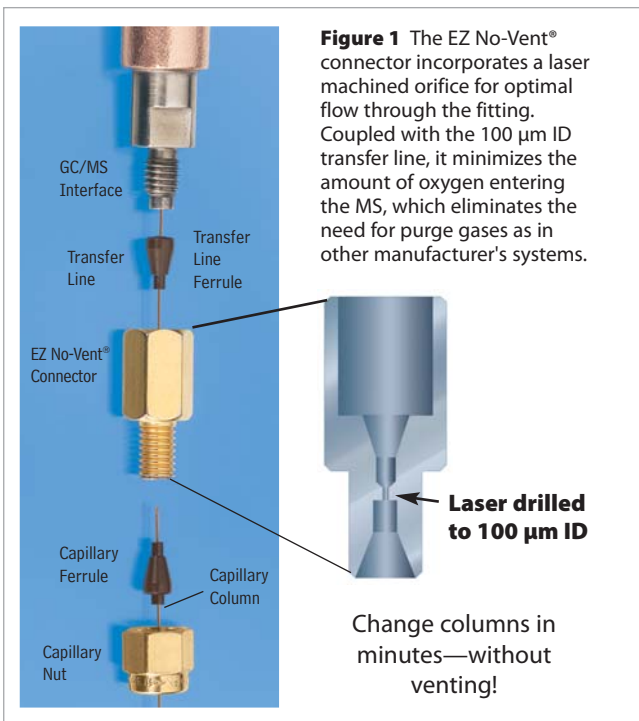


**EZ No-Vent® GC Column-Mass Spectrometer Connector**  
for Agilent GCs with 5971/5972, 5973, or 5975 GC/MS

- Change GC/MS columns in minutes without venting—100 µm transfer line throttles vacuum and eliminates the need to vent.
- Easy to install and maintain—no special tools or plumbing required.
- Gold-plated body for inertness.
- Deactivated transfer line keeps analytes focused.
- High-temperature polyimide ferrules eliminate leaks at the problematic transfer line fitting.
- Lower cost than other “no-vent” fittings.

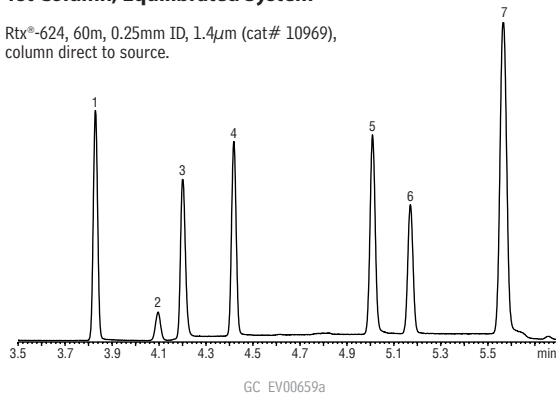
We designed the EZ No-Vent® GC column-mass spectrometer connector to be simple and easy to use. A critical orifice in the EZ No-Vent® connector minimizes the amount of oxygen allowed into the MS source, eliminating the need for purge gas as is required for other manufacturer’s vent systems. This enables you to skip the lengthy vent and pump-down cycle otherwise required when you make a column change. This can save nearly a day of down-time with each column change. The EZ No-Vent® connector easily attaches to the MS source without special tools or extra plumbing. Figure 1 shows the internal structure of the connector. Figure 2 illustrates the high performance achieved with the EZ No-Vent® Connector.



**Figure 2** Sharp, symmetric peaks for gases show the EZ No-Vent® connector does not add dead volume and allows rapid column changes.

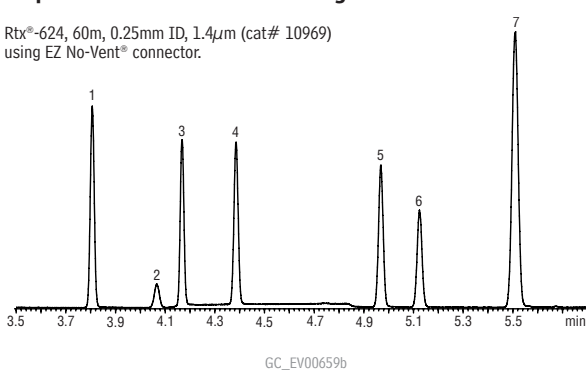
**1st Column, Equilibrated System**

Rtx®-624, 60m, 0.25mm ID, 1.4µm (cat# 10969), column direct to source.



**Acquired 76 minutes after installing 2nd column**

Rtx®-624, 60m, 0.25mm ID, 1.4µm (cat# 10969) using EZ No-Vent® connector.

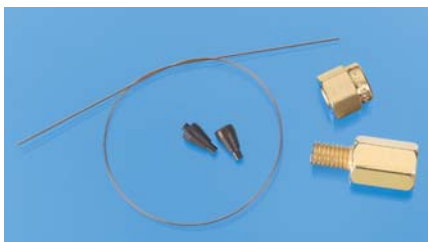


1. dichlorodifluoromethane
2. 1,2-dichlorotetrafluoroethene (Freon® 114)
3. chloromethane
4. vinyl chloride
5. bromomethane
6. chloroethane
7. trichlorofluoromethane

Sample: Volatile Gas Mix 502.2  
Calibration Mix#1 (gases)  
cat# 30042  
Oven temp.: 60°C isothermal  
Det: Agilent 5973 GC/MS  
Transfer line temp.: 280°C  
Inj.: Purge & Trap  
GC: Agilent 6890  
Scan range: 35-550amu  
Inj. temp.: 300°C  
Tune: BFB  
Carrier gas: helium, constant flow  
Ionization: EI  
Flow rate: 1.0mL/min.

restek  
**innovation!**

Kit installs easily,  
without special  
tools or plumbing.



Description	qty.	cat.#	price
<b>EZ No-Vent Connector Kit</b> includes: EZ No-Vent Connector, two 0.4mm ID adaptor ferrules for capillary column, two 0.4mm ID ferrules for transfer line, 100µm deactivated transfer line (3 ft.), column plug, column nut	kit	21323	
Replacement ferrules for connecting capillary column to EZ No-Vent Connector:			
0.4mm ID (Polyimide)	2-pk.	21015	
0.5mm ID (Polyimide)	2-pk.	21016	
Replacement ferrules for connecting transfer line to EZ No-Vent Connector: 0.4mm ID	2-pk.	21043	
Replacement 100µm deactivated transfer line	3 ft.	21018	
Replacement EZ No-Vent Column Nut	20-pk.	23100	
Replacement EZ No-Vent Plug	5-pk.	23112	
Open-End Wrenches, 1/4" x 5/16"	2-pk.	20110	