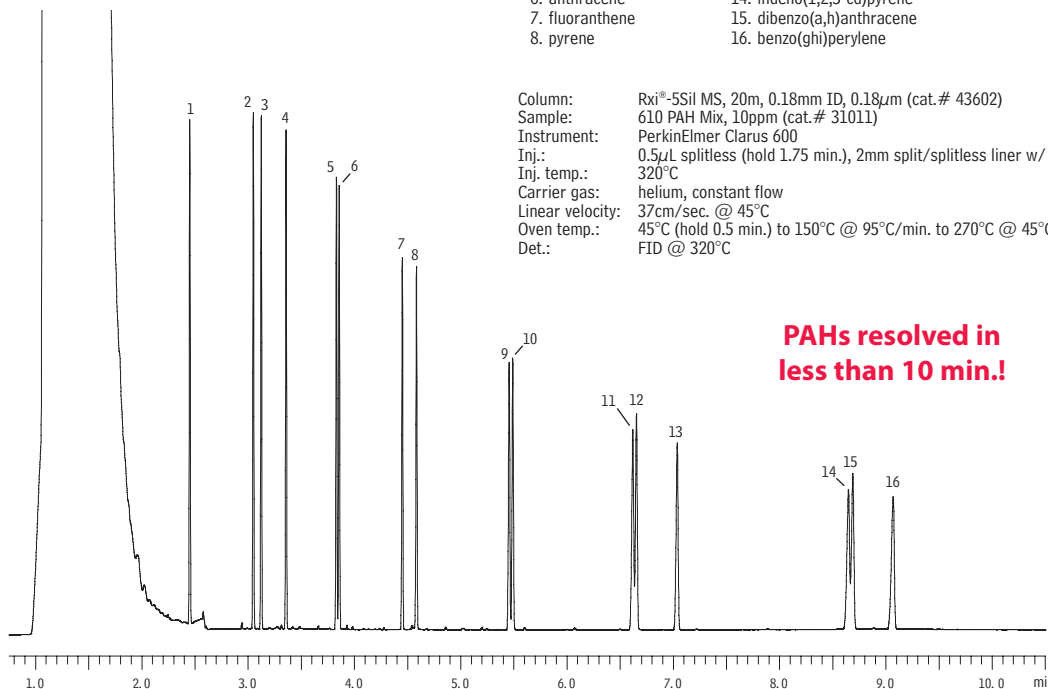




Polycyclic Aromatic Hydrocarbons
US EPA Method 610
Rxi®-5Sil MS (20m x 0.18 mm x 0.18 µm)

- | | |
|-------------------|----------------------------|
| 1. naphthalene | 9. benzo(a)anthracene |
| 2. acenaphthylene | 10. chrysene |
| 3. acenaphthene | 11. benzo(b)fluoranthene |
| 4. fluorene | 12. benzo(k)fluoranthene |
| 5. phenanthrene | 13. benzo(a)pyrene |
| 6. anthracene | 14. indeno(1,2,3-cd)pyrene |
| 7. fluoranthene | 15. dibenzo(a,h)anthracene |
| 8. pyrene | 16. benzo(ghi)perylene |



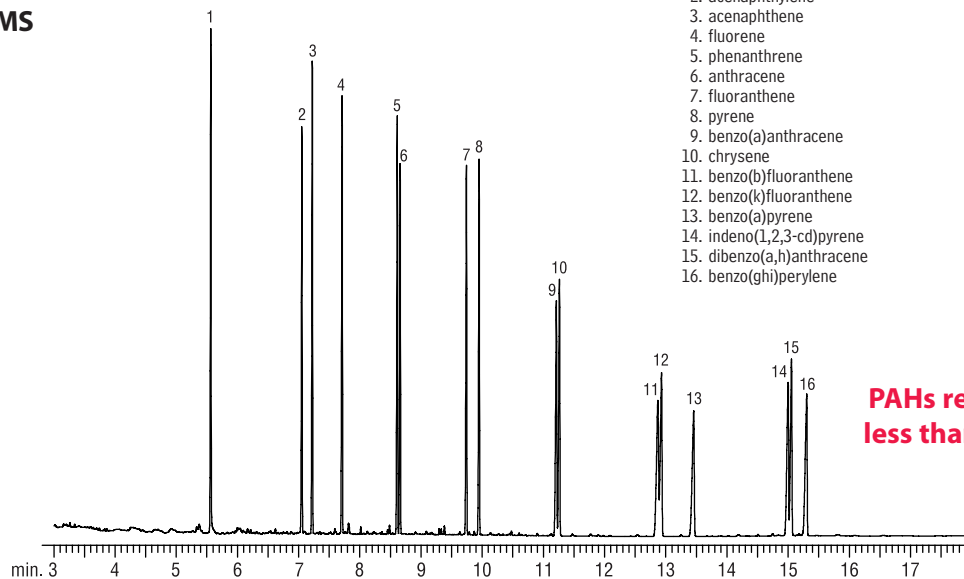
Column: Rxi®-5Sil MS, 20m, 0.18mm ID, 0.18µm (cat.# 43602)
 Sample: 610 PAH Mix, 10ppm (cat.# 31011)
 Instrument: PerkinElmer Clarus 600
 Inj.: 0.5µL splitless (hold 1.75 min.), 2mm split/splitless liner w/ wool (cat.# 21718)
 Inj. temp.: 320°C
 Carrier gas: helium, constant flow
 Linear velocity: 37cm/sec. @ 45°C
 Oven temp.: 45°C (hold 0.5 min.) to 150°C @ 95°C/min. to 270°C @ 45°C/min. to 300°C @ 7°C/min.
 Det.: FID @ 320°C

**PAHs resolved in
less than 10 min.!**

GC_EV01037

Polycyclic Aromatic Hydrocarbons
US EPA Method 610
Rtx®-5Sil MS

- | |
|----------------------------|
| 1. naphthalene |
| 2. acenaphthylene |
| 3. acenaphthene |
| 4. fluorene |
| 5. phenanthrene |
| 6. anthracene |
| 7. fluoranthene |
| 8. pyrene |
| 9. benzo(a)anthracene |
| 10. chrysene |
| 11. benzo(b)fluoranthene |
| 12. benzo(k)fluoranthene |
| 13. benzo(a)pyrene |
| 14. indeno(1,2,3-cd)pyrene |
| 15. dibenzo(a,h)anthracene |
| 16. benzo(ghi)perylene |



Column: Rtx®-5Sil MS, 30m, 0.25mm ID, 0.25µm (cat.# 12723)
 Sample: 50µg/mL 610 PAH Mix (cat.# 31011)
 in methylene chloride
 Inj.: 1.0µL splitless (hold 2 min.),
 2mm splitless inlet liner w/wool (cat.# 20829)
 Inj. temp.: 330°C
 Carrier gas: hydrogen, 4mL/min. constant flow
 Oven temp.: 40°C (hold 2 min.) to 250°C @ 25°C/min. to 265°C @ 5°C/min.
 to 300°C (hold 4 min.) @ 25°C/min.
 Det.: FID @ 350°C

**PAHs resolved in
less than 16 min.!**

GC_EV00595

