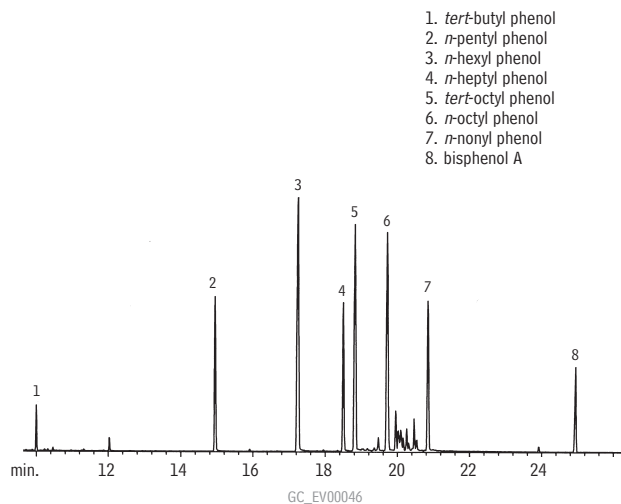


Endocrine Disruptors: Alkyl Phenols

Rtx®-5MS

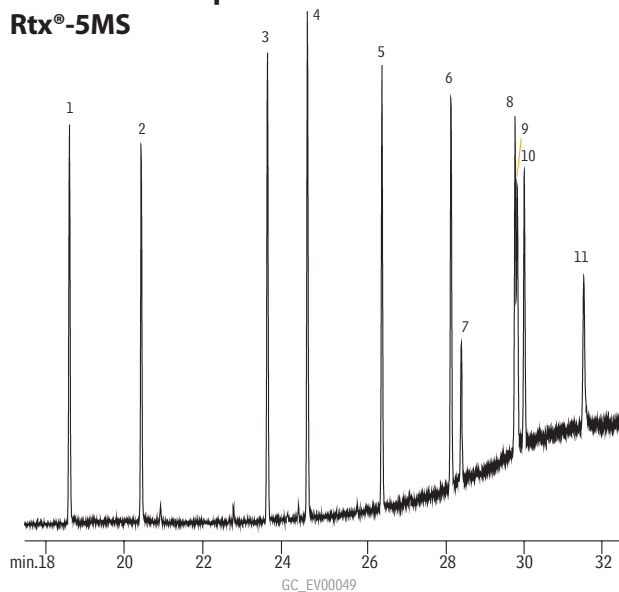


1. *tert*-butyl phenol
2. *n*-pentyl phenol
3. *n*-hexyl phenol
4. *n*-heptyl phenol
5. *tert*-octyl phenol
6. *n*-octyl phenol
7. *n*-nonyl phenol
8. bisphenol A

Column: Rtx®-5MS, 30m, 0.25mm ID, 0.25 μ m (cat.# 12623)
 Conc.: 5–10ng on-column
 Inj.: splitless, purge on @ 1 min.
 Oven temp.: 35°C (hold 1 min.) to 300°C @ 10°C/min. (hold 15 min.)
 Inj./det. temp.: 275°C/310°C
 Carrier gas: helium

Endocrine Disruptors: Phthalate Esters

Rtx®-5MS

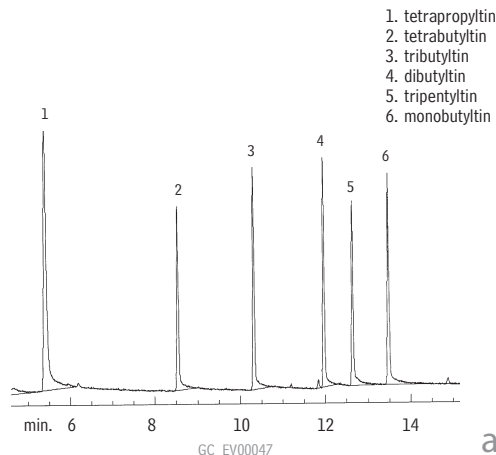


- | | |
|-----------------------|---------------------------|
| 1. dimethyl phthalate | 7. benzylethyl phthalate |
| 2. diethyl phthalate | 8. diheptyl phthalate |
| 3. isobutyl phthalate | 9. 2-ethylhexyl phthalate |
| 4. dibutyl phthalate | 10. cyclohexyl phthalate |
| 5. dipentyl phthalate | 11. dioctyl phthalate |
| 6. dihexyl phthalate | |

Column: Rtx®-5MS, 30m, 0.25mm ID, 0.50 μ m (cat.#12638)
 Conc.: 100pg on-column injection MS-SIM
 Oven temp.: 35°C (hold 1 min.) to 285°C @ 10°C/min.
 Pressure: 7.5psi constant pressure

Endocrine Disruptors:
Butyl Tins (hexyl derivatives)

Rtx®-5

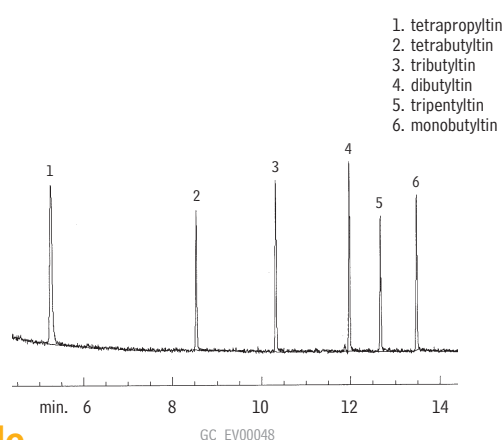


1. tetrapropyltin
2. tetrabutyltin
3. tributyltin
4. dibutyltin
5. tripropyltin
6. monobutyltin

Column: Rtx®-5, 30m, 0.32mm ID, 0.50 μ m (cat.# 10239)
 Conc.: 500pg on-column direct injection
 Oven temp.: 100°C (hold 1 min.) to 285°C @ 10°C/min.
 Inj./det. temp.: 250°C
 Carrier gas: helium
 Linear velocity: 45cm/sec.
 Detector: FPD with 610nm filter

Endocrine Disruptors:
Butyl Tins (hexyl derivatives)

Rtx®-35



1. tetrapropyltin
2. tetrabutyltin
3. tributyltin
4. dibutyltin
5. tripropyltin
6. monobutyltin

Column: Rtx®-35, 30m, 0.32mm ID, 0.50 μ m (cat.# 10439)
 Conc.: 500pg on-column direct injection
 Oven temp.: 100°C (hold 1 min.) to 285°C @ 10°C/min.
 Inj./det. temp.: 250°C
 Carrier gas: helium
 Linear velocity: 45cm/sec.
 Detector: FPD with 610nm filter

also available

Butyl tin reference materials—see page 496.