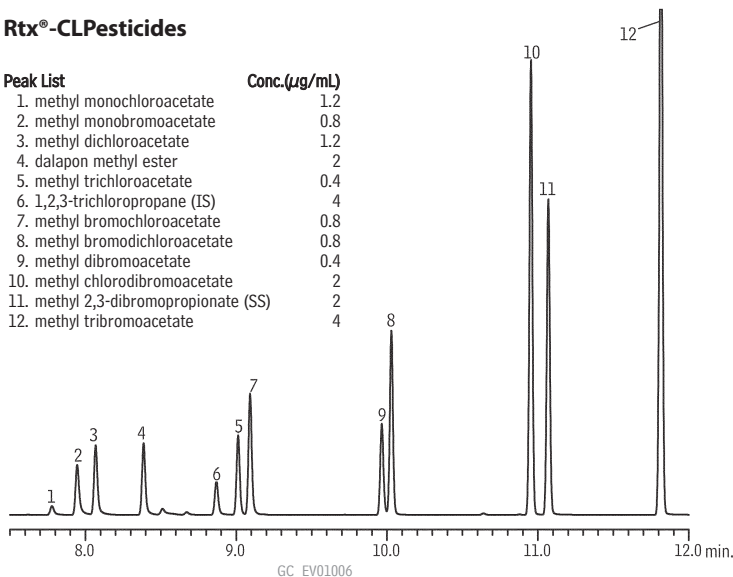
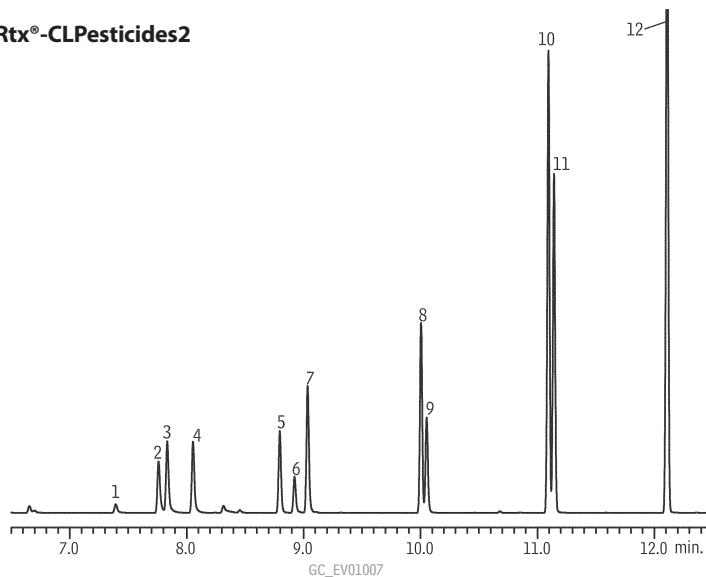


Haloacetic Acids & Dalapon

US EPA Method 552.2

Rtx[®]-CLPesticides & Rtx[®]-CLPesticides2Rtx[®]-CLPesticides

Peak List	Conc.(µg/mL)
1. methyl monochloroacetate	1.2
2. methyl monobromoacetate	0.8
3. methyl dichloroacetate	1.2
4. dalapon methyl ester	2
5. methyl trichloroacetate	0.4
6. 1,2,3-trichloropropane (IS)	4
7. methyl bromochloroacetate	0.8
8. methyl bromodichloroacetate	0.8
9. methyl dibromoacetate	0.4
10. methyl chlorodibromoacetate	2
11. methyl 2,3-dibromopropionate (SS)	2
12. methyl tribromoacetate	4

Rtx[®]-CLPesticides2

Column: Rtx[®]-CLPesticides2, 30m, 0.32mm ID, 0.25µm (cat.# 11324) and Rtx[®]-CLPesticides, 30m, 0.32mm ID, 0.32µm (cat.# 11141) with 5m x 0.32mm ID Rxi[®] deactivated guard tubing (cat.# 10039), connected using Universal "Y" Press-Tight[®] Connector (cat.# 20405-261)

Sample: Haloacetic Acid Methyl Ester Mix #2 (cat.# 31647), Dalapon Methyl Ester (cat.# 32057), Methyl-2,3-dibromopropionate (cat.# 31656), 552.2 Internal Standard (cat.# 31648), diluted in methyl *tert*-butyl ether (MTBE)

Inj.: 1µL splitless (hold 0.75 min.), 4mm cyclo double gooseneck liner (cat.# 20896)

Inj. temp.: 250°C

Carrier gas: helium, constant flow

Linear velocity: 25cm/sec. @ 35°C

Oven temp.: 35°C (hold 4 min.) to 250°C (hold 5 min.) @ 15°C/min.

Detector temp.: µ-ECD @ 300°C