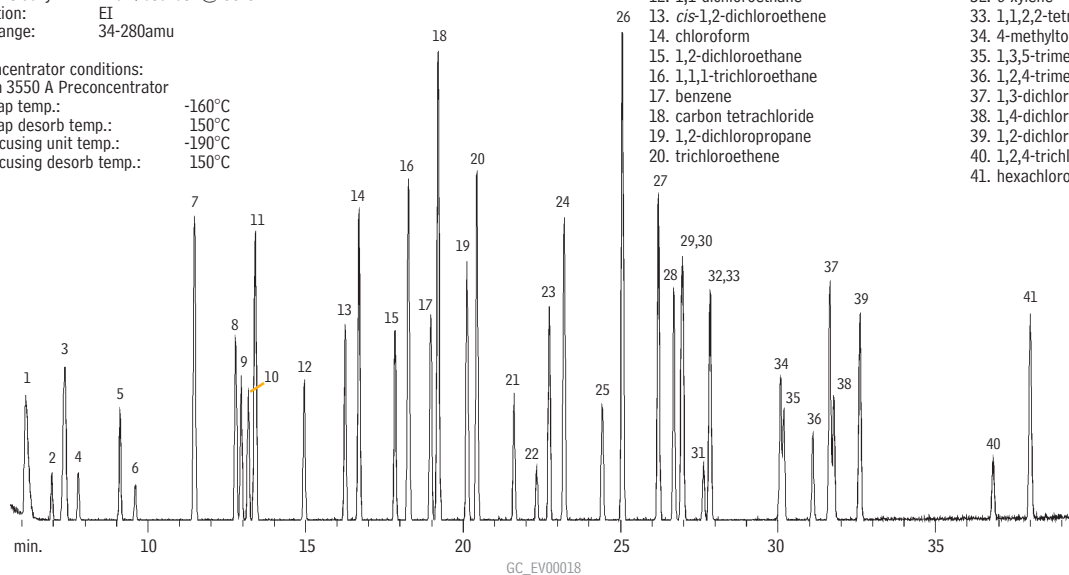


## US EPA TO-14 Compounds

## Rtx®-1

Column: Rtx®-1, 60m, 0.32mm ID, 3.0µm (cat.# 10187)  
 Sample: 5mL of 2ppmv TO-14 standard.  
 Oven temp.: 30°C (hold 4 min.) to 250°C @ 7°C/min. (hold 15 min.)  
 Detector: MS  
 Det. temp.: 250°C  
 Carrier gas: helium  
 Linear velocity: 21cm/sec. set @ 30°C  
 Ionization: EI  
 Scan range: 34-280amu

Preconcentrator conditions:  
 Nutech 3550 A Preconcentrator  
 Cryotrap temp.: -160°C  
 Cryotrap desorb temp.: 150°C  
 Cryofocusing unit temp.: -190°C  
 Cryofocusing desorb temp.: 150°C



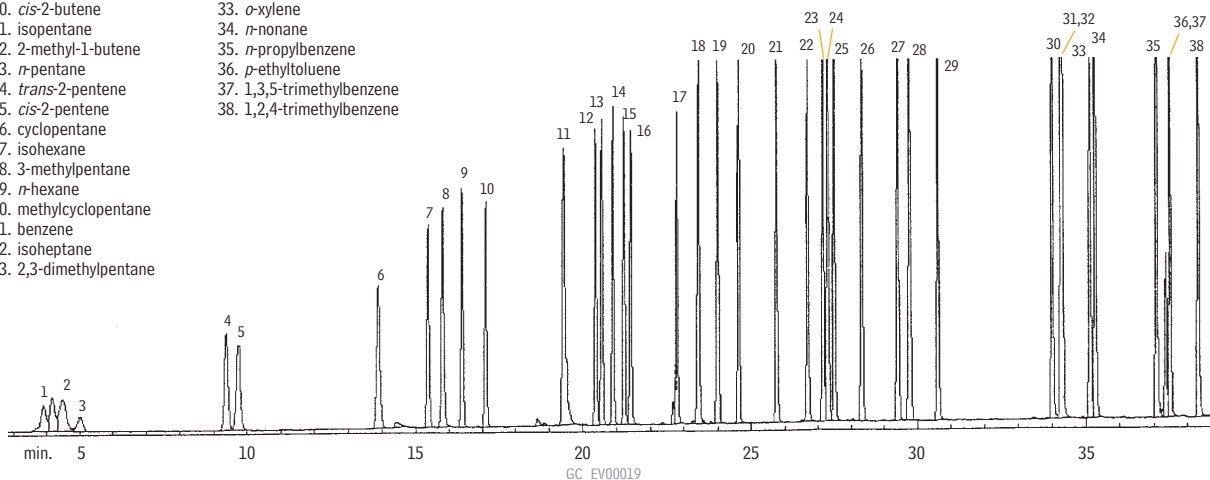
1. dichlorodifluoromethane
2. chloromethane
3. 1,2-dichlorotetrafluoroethane
4. vinyl chloride
5. bromomethane
6. chloroethane
7. trichlorofluoromethane
8. 1,1-dichloroethene
9. methylene chloride
10. 3-chloropropene
11. 1,1,2-trichloro-1,2,2-trifluoroethane
12. 1,1-dichloroethane
13. *cis*-1,2-dichloroethene
14. chloroform
15. 1,2-dichloroethane
16. 1,1,1-trichloroethane
17. benzene
18. carbon tetrachloride
19. 1,2-dichloropropane
20. trichloroethene
21. *cis*-1,3-dichloropropene
22. *trans*-1,3-dichloropropene
23. 1,1,2-trichloroethane
24. toluene
25. 1,2-dibromoethane
26. tetrachloroethene
27. chlorobenzene
28. ethylbenzene
29. *m*-xylene
30. *p*-xylene
31. styrene
32. *o*-xylene
33. 1,1,2,2-tetrachloroethane
34. 4-methyltoluene
35. 1,3,5-trimethylbenzene
36. 1,2,4-trimethylbenzene
37. 1,3-dichlorobenzene
38. 1,4-dichlorobenzene
39. 1,2-dichlorobenzene
40. 1,2,4-trichlorobenzene
41. hexachlorobutadiene

## Ozone Precursors

## Rtx®-1

Column: Rtx®-1, 60m, 0.32mm ID, 3.0µm (cat.# 10187)  
 Sample: 0.5L of C2-C9 gas standard cryogenically concentrated;  
 15nL/component desorbed onto column.  
 Oven temp.: -60°C (hold 5 min.) to 100°C @ 8°C/min., to  
 150°C @ 6°C/min., then to 240°C @ 8°C/min.  
 Carrier gas: helium  
 Linear velocity: 30cm/sec. (flow rate: 1.8cc/min.)  
 FID sensitivity: 64 x 10<sup>12</sup> AFS

1. ethylene
2. acetylene
3. ethane
4. propylene
5. propane
6. isobutane
7. 1-butene
8. *n*-butane
9. *trans*-2-butene
10. *cis*-2-butene
11. isopentane
12. 2-methyl-1-butene
13. *n*-pentane
14. *trans*-2-pentene
15. *cis*-2-pentene
16. cyclopentane
17. isohexane
18. 3-methylpentane
19. *n*-hexane
20. methylcyclopentane
21. benzene
22. isoheptane
23. 2,3-dimethylpentane
24. 3-methylhexane
25. 2,2,4-trimethylpentane
26. *n*-heptane
27. methylcyclohexane
28. 2,2,3-trimethylpentane
29. toluene
30. ethylbenzene
31. *m*-xylene
32. *p*-xylene
33. *o*-xylene
34. *n*-nonane
35. *n*-propylbenzene
36. *p*-ethyltoluene
37. 1,3,5-trimethylbenzene
38. 1,2,4-trimethylbenzene



Permission to publish this chromatogram granted by Radian Corporation.