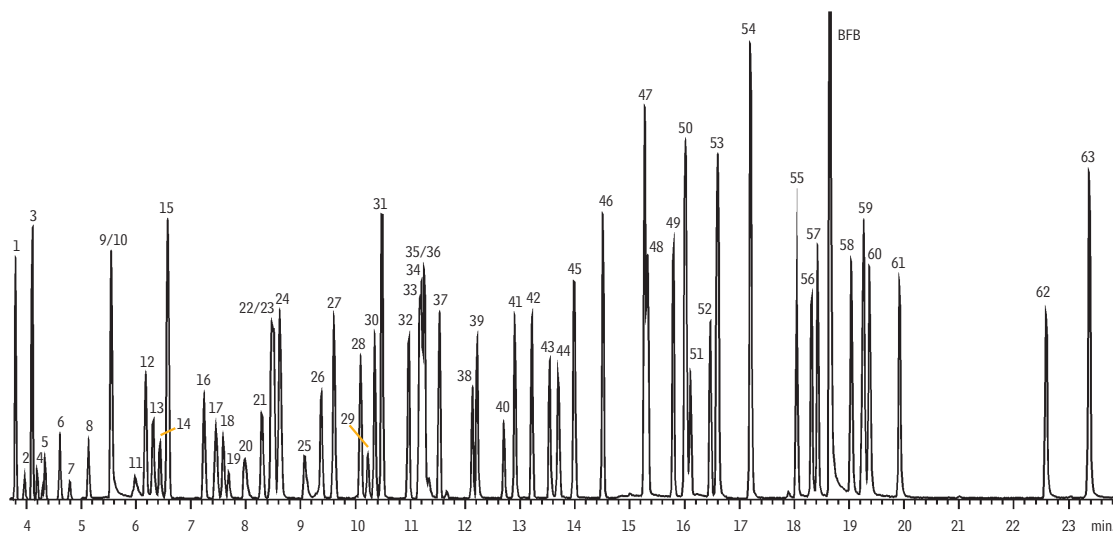


## US EPA TO-14/TO-15 Compounds

## Rtx®-1



GC\_EV00379

Column: Rtx®-1, 60m, 0.32mm ID, 1.0 $\mu$ m (cat.# 10157)  
 Sample: 200mL of 10ppbv TO-15 standard, injected into TO-Can® canister and humidified to 70% RH.  
 Concentrator: Nutech 3550 Preconcentrator  
 200mL of sample concentrated at -160°C, thermally desorbed at 150°C, and cryofocused at -185°C  
 Oven temp.: 30°C (hold 4 min.) to 175°C @ 9°C/min. to 220°C @ 40°C/min.  
 Carrier gas: helium @ 1.2mL/min.  
 Det.: Agilent 5971 MS  
 Scan range: 35-265amu

1. dichlorofluoromethane	23. <i>n</i> -hexane	45. 1,2-dibromoethane
2. chloromethane	24. chloroform	46. tetrachloroethene
3. dichlorotetrafluoroethane	25. tetrahydrofuran	47. chlorobenzene-d5 (IS)
4. vinyl chloride	26. 1,2-dichloroethane	48. chlorobenzene
5. 1,3-butadiene	27. 1,1,1-trichloroethane	49. ethylbenzene
6. bromomethane	28. benzene	50a. <i>m</i> -xylene
7. chloroethane	29. carbon tetrachloride	50b. <i>p</i> -xylene
8. bromoethene	30. cyclohexane	51. bromoform
9. acetone	31. 1,4-difluorobenzene (IS)	52. styrene
10. trichlorofluoromethane	32. 1,2-dichloropropane	53. 1,1,2,2-tetrachloroethane
11. isopropyl alcohol	33. bromodichloromethane	54. <i>o</i> -xylene
12. 1,1-dichloroethene	34. trichloroethene	55. 2-chlorotoluene
13. methylene chloride	35. 1,4-dioxane	56. 4-ethyltoluene
14. 3-chloropropene	36. 2,2,4-trimethylpentane	57. 1,3,5-trimethylbenzene
15. carbon disulfide	37. <i>n</i> -heptane	58. 1,2,4-trimethylbenzene
16. Freon® TF	38. <i>cis</i> -1,3-dichloropropene	59. 1,3-dichlorobenzene
17. <i>trans</i> -1,2-dichloroethene	39. methyl isobutyl ketone	60. 1,4-dichlorobenzene
18. 1,1-dichloroethane	40. <i>trans</i> -1,3-dichloropropene	61. 1,2-dichlorobenzene
19. methyl <i>tert</i> -butyl ether	41. 1,1,2-trichloroethane	62. 1,2,4-trichlorobenzene
20. methyl ethyl ketone	42. toluene	63. hexachlorobutadiene
21. <i>cis</i> -1,2-dichloroethene	43. methyl butyl ketone	
22. bromochloromethane (IS)	44. dibromochloromethane	

Chromatogram courtesy of Gina Maio, Severn Trent Laboratories, Inc., Burlington, VT.