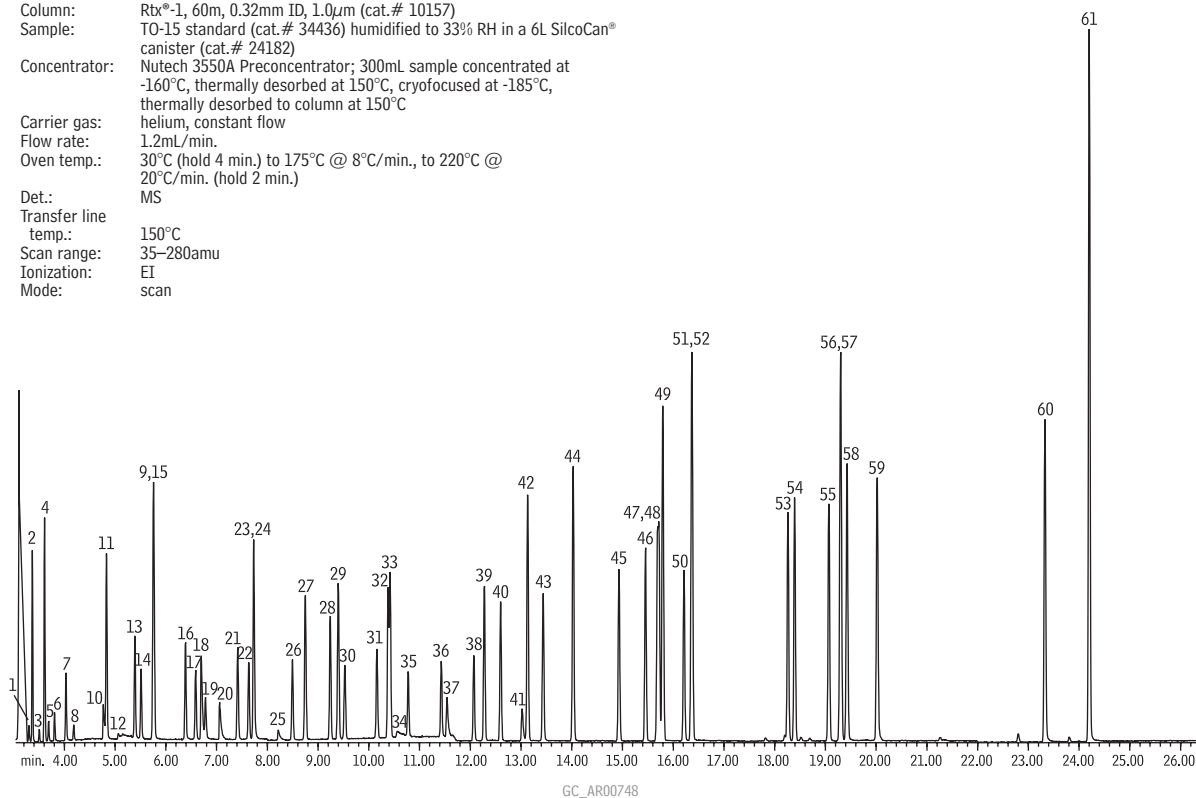


## US EPA TO-15 Compounds

## Rtx®-1

Column: Rtx®-1, 60m, 0.32mm ID, 1.0µm (cat.# 10157)  
 Sample: TO-15 standard (cat.# 34436) humidified to 33% RH in a 6L SilcoCan® canister (cat.# 24182)  
 Concentrator: Nutech 3550A Preconcentrator; 300mL sample concentrated at -160°C, thermally desorbed at 150°C, cryofocused at -185°C, thermally desorbed to column at 150°C  
 Carrier gas: helium, constant flow  
 Flow rate: 1.2mL/min.  
 Oven temp.: 30°C (hold 4 min.) to 175°C @ 8°C/min., to 220°C @ 20°C/min. (hold 2 min.)  
 Det.: MS  
 Transfer line temp.: 150°C  
 Scan range: 35–280amu  
 Ionization: EI  
 Mode: scan



- |  |                                       |                               |
|--|---------------------------------------|-------------------------------|
| 1. propylene   | 22. hexane                            | 43. 1,2-dibromoethane         |
| 2. Freon®-12 (dichlorodifluoromethane)                 | 23. chloroform                        | 44. tetrachloroethylene       |
| 3. chloromethane                                       | 24. ethyl acetate                     | 45. chlorobenzene             |
| 4. Freon®-114 (dichlorotetrafluoroethane)              | 25. tetrahydrofuran                   | 46. ethylbenzene              |
| 5. vinyl chloride                                      | 26. 1,2-dichloroethane                | 47. <i>p</i> -xylene          |
| 6. 1,3-butadiene                                       | 27. 1,1,1-trichloroethane             | 48. <i>m</i> -xylene          |
| 7. bromomethane  | 28. benzene                           | 49. bromoform                 |
| 8. chloroethane  | 29. carbon tetrachloride              | 50. styrene                   |
| 9. carbon disulfide                                    | 30. cyclohexane                       | 51. <i>o</i> -xylene          |
| 10. acetone  | 31. 1,2-dichloropropane               | 52. 1,1,2,2-tetrachloroethane |
| 11. Freon®-11 (trichlorofluoromethane)                 | 32. trichloroethylene                 | 53. 4-ethyltoluene            |
| 12. isopropyl alcohol                                  | 33. bromodichloromethane              | 54. 1,3,5-trimethylbenzene    |
| 13. 1,1-dichloroethene                                 | 34. 1,4-dioxane                       | 55. 1,2,4-trimethylbenzene    |
| 14. methylene chloride                                 | 35. heptane                           | 56. 1,3-dichlorobenzene       |
| 15. Freon®-113 (1,1,2-trichloro-1,2,2-trifluoroethane) | 36. <i>cis</i> -1,3-dichloropropene   | 57. benzyl chloride           |
| 16. <i>trans</i> -1,2-dichloroethene                   | 37. methyl isobutyl ketone            | 58. 1,4-dichlorobenzene       |
| 17. 1,1-dichloroethane                                 | 38. <i>trans</i> -1,3-dichloropropene | 59. 1,2-dichlorobenzene       |
| 18. methyl <i>tert</i> -butyl ether                    | 39. 1,1,2-trichloroethane             | 60. 1,2,4-trichlorobenzene    |
| 19. vinyl acetate                                      | 40. toluene                           | 61. hexachloro-1,3-butadiene  |
| 20. methyl ethyl ketone                                | 41. methyl butyl ketone               |                               |
| 21. <i>cis</i> -1,2-dichloroethene                     | 42. dibromochloromethane              |                               |

## Chromatogram Search Tool

Search by compound name, synonym,  
CAS # or keyword

[www.restek.com/chromatograms](http://www.restek.com/chromatograms)

