

GCxGC Second Dimension Selectivity Kit

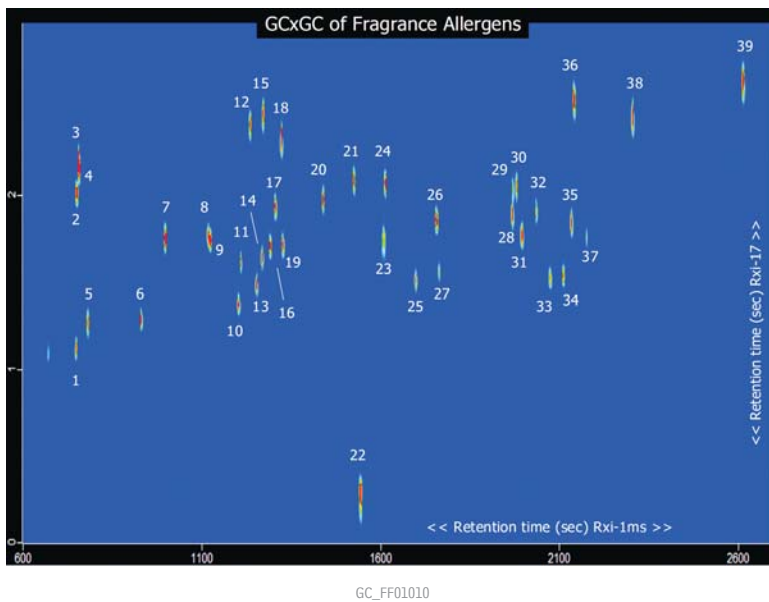
The selectivity kit contains four columns of different selectivity for method development. Includes one each of the following:

- Rxi®-17, 50% diphenyl dimethylpolysiloxane
- Rtx®-CLPesticides, trifluoropropyl containing polymer
- Stabilwax®, polar polyethylene glycol
- Rt®-LC350, liquid crystalline phase selective for aromatic compounds

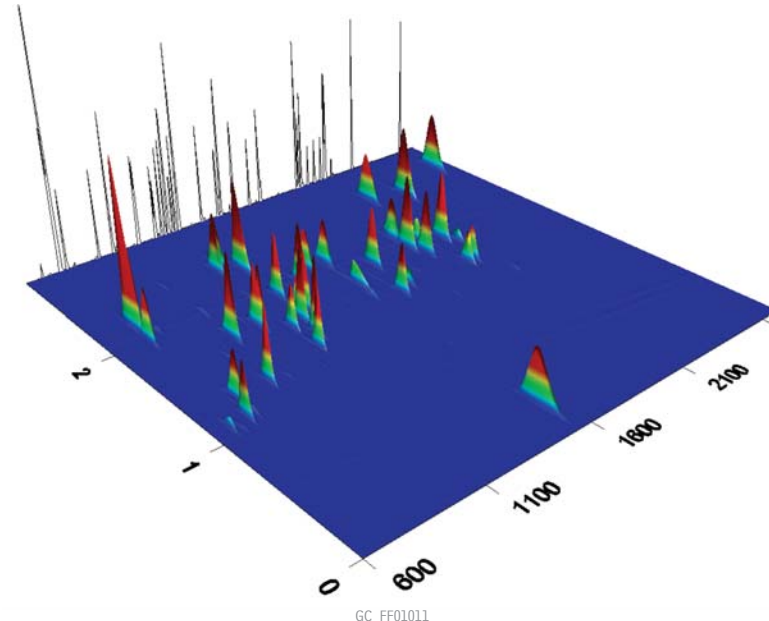
Description	qty.	cat.#	price
GCxGC Second Dimension Selectivity Kit	kit	15105	
Columns can also be purchased individually.			
Rxi-17, 1.1m (±3cm), 0.10mm ID, 0.10µm	ea.	15104	
Rtx-CLPesticides, 1.1m (±3cm), 0.10mm ID, 0.10µm	ea.	15103	
Stabilwax, 1.1m (±3cm), 0.10mm ID, 0.10µm	ea.	15102	
Rt-LC350, 1.1m (±3cm), 0.15mm ID, 0.10µm	ea.	15101	



Fragrance Allergens on Rxi®-1ms & Rxi®-17 (GC x GC)



- | | |
|--------------------------|----------------------------|
| 1. limonene | 21. methyl eugenol |
| 2. 1-fluoronaphthalene | 22. coumarin |
| 3. benzyl alcohol | 23. hydroxycitronellol |
| 4. phenyl acetaldehyde | 24. isoeugenol |
| 5. eucalyptol | 25. α-isomethyl ionone 1 |
| 6. linalool | 26. linal |
| 7. camphor | 27. α-isomethyl ionone 2 |
| 8. methyl-2-octynoate | 28. amyl cinnamal |
| 9. estragole | 29. lylal 1 |
| 10. citronellol | 30. lylal 2 |
| 11. citral 1 | 31. amylcinnamyl alcohol 1 |
| 12. trans-cinnamaldehyde | 32. amylcinnamyl alcohol 2 |
| 13. geraniol | 33. farnesol 1 |
| 14. citral 2 | 34. farnesol 2 |
| 15. anise alcohol | 35. hexyl cinnamal 1 |
| 16. hydroxycitronellol | 36. benzyl benzoate |
| 17. saffrole | 37. hexyl cinnamal 2 |
| 18. cinnamyl alcohol | 38. benzyl salicylate |
| 19. methyl-2-nonynoate | 39. benzyl cinnamate |
| 20. eugenol | |



Columns: Rxi®-1ms, 30m, 0.25mm ID, 0.25µm (cat.# 13323)
Rxi®-17, 1m, 0.10mm ID, 0.10µm (10m, cat.# 13501)

Sample: fragrance allergens in MTBE

Instrument: LECO Corporation GCxGC/FID with quad-jet, dual-stage modulator and secondary oven

Inj.: 0.2µL split (split ratio 1:200), 4mm laminar cup splitter (cat.# 20801)

Inj. temp.: 250°C

Carrier gas: helium, corrected constant flow via pressure ramps

Flow rate: 2mL/min.

Oven temp.: Rxi®-1ms: 40°C (hold 1 min.) to 240°C @ 4°C/min.
Rxi®-17: 45°C (hold 1 min.) to 245°C @ 4°C/min.

Modulation: modulator temperature offset: 20°C
second dimension separation time: 3 sec.
hot pulse time: 0.8 sec.
cool time between stages: 0.7 sec.

Det.: FID @ 300°C
makeup flow + column flow: 50mL/min.
hydrogen: 40mL/min.
air: 450mL/min.
data collection rate: 200 Hz