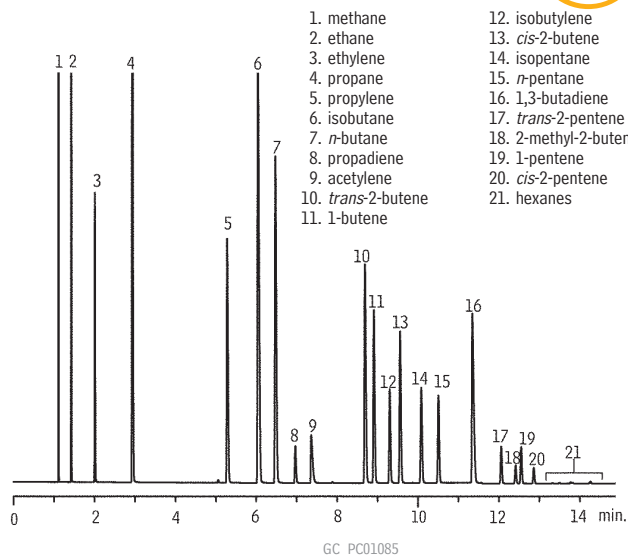


Refinery Gas

Rt®-Alumina BOND/Na₂SO₄
(PLOT)

NEW!



Column: Rt®-Alumina BOND/Na₂SO₄, 50m, 0.53mm ID, 10µm (cat.# 19756)
Sample: refinery gas
Inj.: 10µL split (split vent flow 80mL/min.), 2mm single gooseneck liner (cat.# 20795)
Inj. temp.: 200°C
Carrier gas: hydrogen, constant pressure, 8.0psi
Linear velocity: 74cm/sec. @ 45°C
Oven temp.: 45°C (hold 1 min.) to 200°C @ 10°C/min. (hold 3.5 min.)
Det.: FID @ 200°C



Diane Thompson, Customer Service

Restek Customer Service

In the U.S.

Call: 800-356-1688 (ext. 3) or 814-353-1300 (ext. 3)
Monday–Friday 8:00 a.m.–6:00 p.m. ET
Fax: 814-353-1309—24-hours a day
Online: www.restek.com—24-hours a day

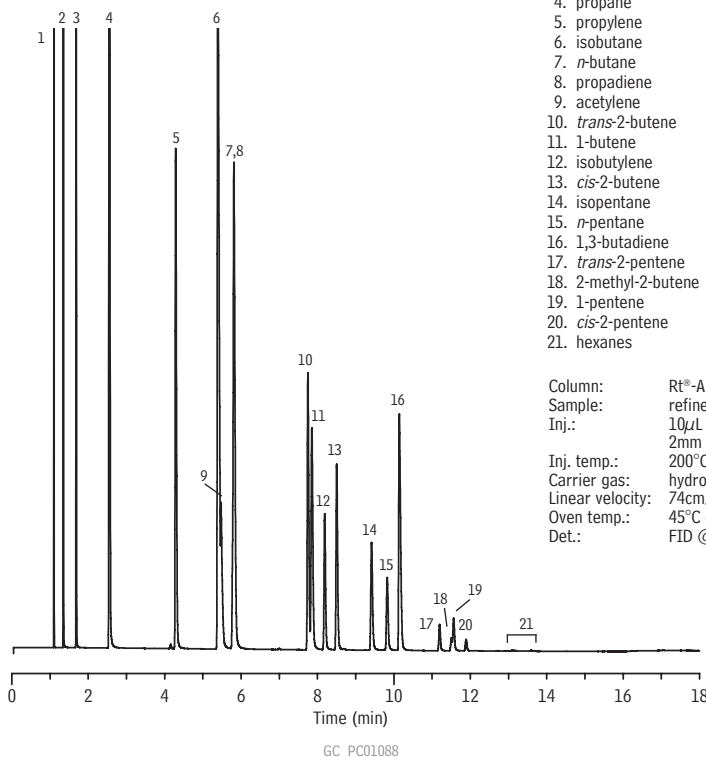
Outside the U.S.

Contact your Restek representative:
Refer to our list on pages 4-5 or visit our website at
www.restek.com

Refinery Gas

Rt®-Alumina BOND/KCl
(PLOT)

NEW!



1. methane
2. ethane
3. ethylene
4. propane
5. propylene
6. isobutane
7. n-butane
8. propadiene
9. acetylene
10. trans-2-butene
11. 1-butene
12. isobutylene
13. cis-2-butene
14. isopentane
15. n-pentane
16. 1,3-butadiene
17. trans-2-pentene
18. 2-methyl-2-butene
19. 1-pentene
20. cis-2-pentene
21. hexanes

Column: Rt®-Alumina BOND/KCl, 50m, 0.53mm ID, 10µm (cat.# 19760)
Sample: refinery gas
Inj.: 10µL split (split vent flow 80mL/min.), 2mm single gooseneck liner (cat.# 20795)
Inj. temp.: 200°C
Carrier gas: hydrogen, constant pressure, 8.0psi
Linear velocity: 74cm/sec. @ 45°C
Oven temp.: 45°C (hold 1 min.) to 200°C @ 10°C/min. (hold 3.5 min.)
Det.: FID @ 200°C