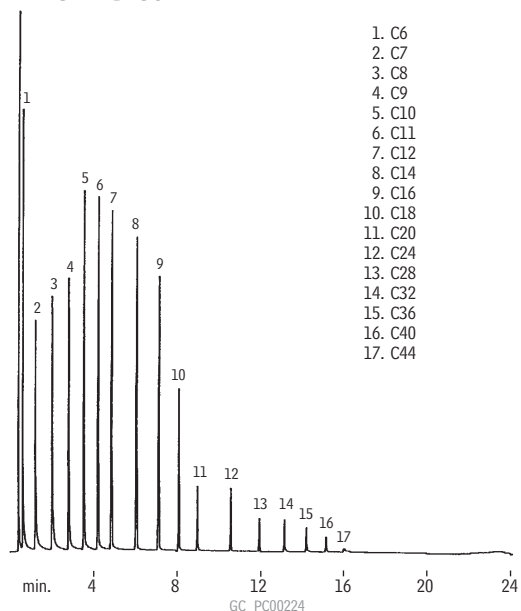


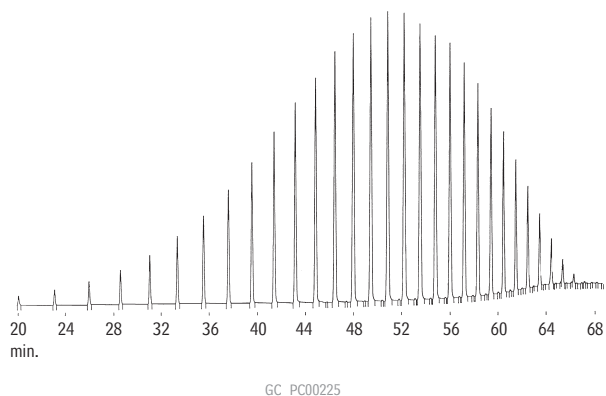
**Simulated Distillation  
(Standard Calibration)  
MXT®-1 Sim Dist**



Column: MXT®-1 Sim Dist, 6m, 0.53mm ID, 0.15µm (cat.# 70101)  
 Sample: wet needle on-column injection of ASTM D2887 standard  
 Oven temp.: -12°C to 430°C @ 20°C/min.  
 Inj./det. temp.: -17°C to 433°C/430°C  
 Carrier gas: hydrogen  
 Linear velocity: 40cm/sec.  
 FID sensitivity: 128 x 10<sup>-11</sup> AFS

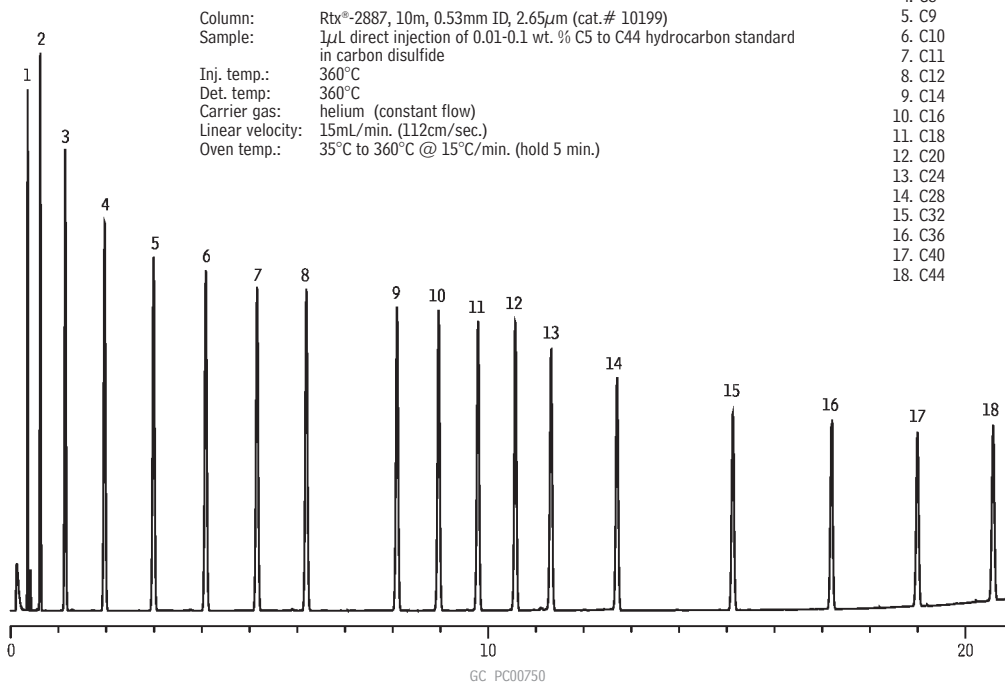
1. C6
2. C7
3. C8
4. C9
5. C10
6. C11
7. C12
8. C14
9. C16
10. C18
11. C20
12. C24
13. C28
14. C32
15. C36
16. C40
17. C44

**Simulated Distillation  
(High-Temperature)  
MXT®-500 Sim Dist**



Column: MXT®-500 Sim Dist, 6m, 0.53mm ID, 0.15µm (cat.# 70104)  
 Sample: cold on-column injection of Polywax® 655 in CS<sub>2</sub>  
 Oven temp.: 40°C to 430°C @ 6°C/min.  
 Carrier gas: helium  
 Linear velocity: 40cm/sec.  
 FID sensitivity: 2 x 10<sup>-11</sup> AFS

**Simulated Distillation  
Rtx®-2887**



Column: Rtx®-2887, 10m, 0.53mm ID, 2.65µm (cat.# 10199)  
 Sample: 1µL direct injection of 0.01-0.1 wt. % C5 to C44 hydrocarbon standard in carbon disulfide  
 Inj. temp.: 360°C  
 Det. temp.: 360°C  
 Carrier gas: helium (constant flow)  
 Linear velocity: 15mL/min. (112cm/sec.)  
 Oven temp.: 35°C to 360°C @ 15°C/min. (hold 5 min.)

1. C5
2. C6
3. C7
4. C8
5. C9
6. C10
7. C11
8. C12
9. C14
10. C16
11. C18
12. C20
13. C24
14. C28
15. C32
16. C36
17. C40
18. C44