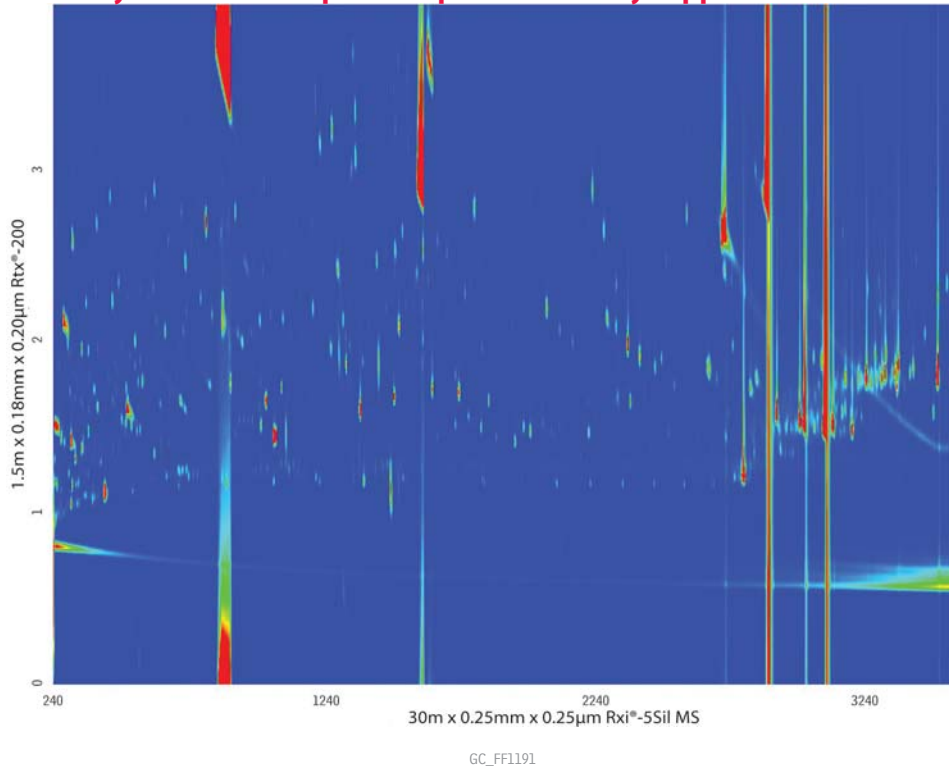


Dietary Supplement (Finished Product) QuEChERS Extract Cleaned with Cartridge SPE
(GCxGC-TOFMS Contour Plot)



GCxGC with orthogonal Rxi®-5Sil MS and Rtx®-200 columns is a powerful way to handle complex samples like dietary supplement extracts.



Column Rxi®-5Sil MS 30 m, 0.25 mm ID, 0.25 µm (cat.# 13623)
Rtx®-200 1.5 m, 0.18 mm ID, 0.20 µm (cat.# 45001)

Sample
Diluent: Toluene

Injection
Inj. Vol.: 1 µL splitless (hold 1 min.)
Liner: Gooseneck Splitless (4mm) w/Wool (cat.# 22405)
Inj. Temp.: 250 °C
Purge Flow: 40 mL/min.

Oven
Oven Temp: Rxi®-5Sil MS: 80 °C (hold 1 min.) to 310 °C at 4 °C/min. (hold 1.5 min.)
Rtx®-200: 90 °C (hold 1 min.) to 320 °C at 4 °C/min. (hold 1.5 min.)

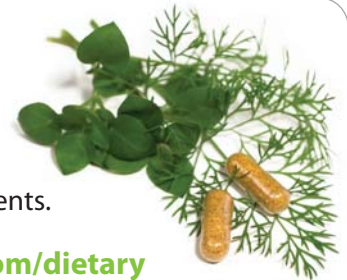
Carrier Gas
Flow Rate: 1.8 mL/min.
He, constant flow

Modulation
Modulator
Temp. Offset: 25 °C
Second Dimension
Separation Time: 4 sec.
Hot Pulse Time: 1.2 sec.
Cool Time
between Stages: 0.8 sec.

Detector
Transfer
Line Temp.: 290 °C
Analyzer Type: TOF
Source Temp.: 225 °C
Electron Energy: 70 eV
Mass Defect: -20 mu/100 u
Solvent Delay
Time: 4 min.
Ionization Mode: EI
Acquisition Range: 45 to 550 amu
Spectral
Acquisition Rate: 100 spectra/sec.

Instrument Notes
LECO Pegasus 4D GCxGC-TOFMS
See application note PHAN1251 for extraction and cleanup details. A 1.5 m length of the Rtx®-200 column was trimmed from a 10 m column. Columns were connected with a Universal Press-Tight® Connector (cat.# 20429).

Restek is your complete source for analyzing pesticides in dietary supplements.



www.restek.com/dietary