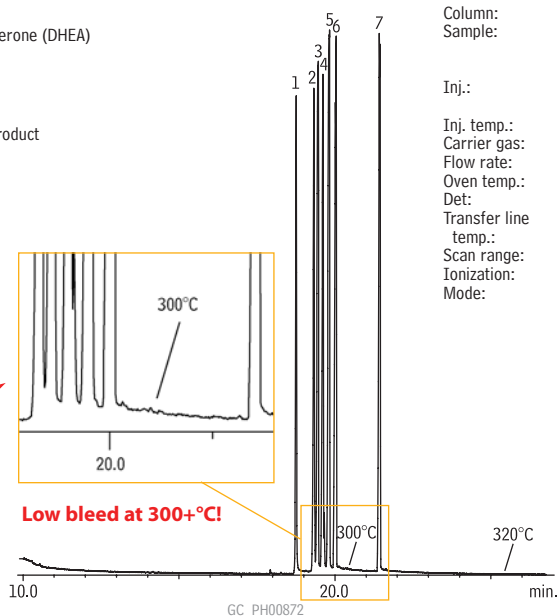


Steroids: Sex Hormones

Rxi®-1ms

1. androsterone
2. dehydroepiandrosterone (DHEA)
3. 17- α -estradiol
4. estrone
5. 17- β -estradiol
6. testosterone
7. derivatization by-product

Column: Rxi®-1ms, 30m, 0.25mm ID, 0.25 μ m (cat.# 13323)
 Sample: 100 μ g/mL each hormone in methanol or ethanol; compounds derivatized using 2% methoxyamine HCl (CH₃ONH₂) in pyridine, then N-trimethylsilylimidazole (TMSI), then analyzed
 Inj.: 1.0 μ L splitless (hold 0.5 min.), 3.5mm single gooseneck inlet liner (cat.# 20961)
 Inj. temp.: 250°C
 Carrier gas: helium, constant flow
 Flow rate: 1mL/min.
 Oven temp.: 100°C to 320°C @ 10°C/min. (hold 10 min.)
 Det: MS: Shimadzu L7A with QP5000
 Transfer line temp.: 280°C
 Scan range: 40-700amu
 Ionization: EI
 Mode: scan



Excellent resolution of closely eluting hormones.

Low bleed at 300+°C!

Rxi® Technology!

Exceptionally inert,
ultra low- bleed
capillary columns.



Stu Kline, Customer Service

Restek Customer Service

In the U.S.

Call: 800-356-1688 (ext. 3) or 814-353-1300 (ext. 3)

Monday–Friday 8:00 a.m.–6:00 p.m. ET

Fax: 814-353-1309—24-hours a day

Online: www.restek.com—24-hours a day

Outside the U.S.

Contact your Restek representative:
Refer to our list on pages 4-5 or visit our website at www.restek.com