

## Organic Volatile Impurities (OVI) Analysis

# Rxi<sup>®</sup>-624Sil MS Columns for USP<467> Residual Solvents analysis

NEW!

**Improve system suitability pass rates with the best resolution of acetonitrile and dichloromethane on any G43.**

- Symmetric peak shape for bases provides accurate integration and unmatched sensitivity.
- High thermal stability ensures a consistent baseline, making it the only MS friendly column in its class.
- Reproducible Rxi<sup>®</sup> technology provides the column-to-column reproducibility needed in validated methods.

### Rxi<sup>®</sup>-624Sil MS Columns (fused silica)

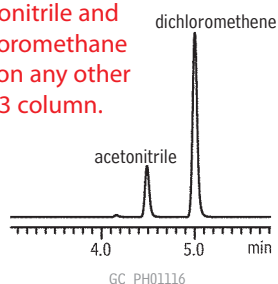
(midpolarity Crossbond<sup>®</sup> silarylene phase; equivalent to 6% cyanopropylphenyl/94% dimethyl arylene polysiloxane)

- Low bleed, high thermal stability column—maximum temperatures up to 320 °C.
- Inert—excellent peak shape for a wide range of compounds, including acidic and basic compounds.
- Selective—highly selective for residual solvents, great choice for USP<467>.
- Manufactured for column-to-column reproducibility—well-suited for validated methods.

ID	df	temp. limits	20-Meter	30-Meter	60-Meter
0.18mm	1.00µm	-20 to 300/320°C	13865		
0.25mm	1.40µm	-20 to 300/320°C		13868	
0.32mm	1.80µm	-20 to 300/320°C		13870	13872
0.53mm	3.00µm	-20 to 280/300°C		13871	

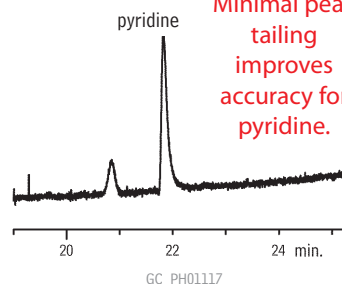
#### Class 2 Mix A

Better resolution of acetonitrile and dichloromethane than on any other G43 column.



#### Class 2 Mix B

Minimal peak tailing improves accuracy for pyridine.

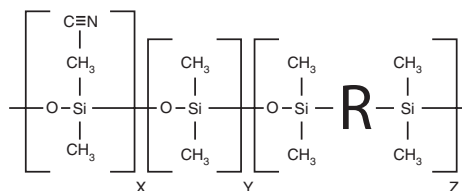


Column: Rxi<sup>®</sup>-624Sil MS, 30m, 0.32mm ID, 1.8µm (cat.# 13870)  
 Inj.: 1.0mL manual headspace injection, split (3:1), 1mm split liner (cat.# 20972)  
 Inj. temp.: 140°C  
 Carrier gas: helium, constant flow  
 Flow rate: 2.2mL/min.  
 Oven temp.: 40°C (hold 20 min.) to 240°C @ 10°C/min. (hold 20 min.)  
 Det: FID @ 250°C  
 Hydrogen: 40mL/min.  
 Air: 450mL/min.  
 Makeup: 45mL/min.  
 Instrument: Agilent 6890

## Make the Switch to Rxi<sup>®</sup> columns!

Replaces: DB-624, HP-624, VF-624, BP-624, ZB-624, AT-624, 007-1301, G43R

### Rxi<sup>®</sup>-624Sil MS Structure



Visit [www.restek.com/ovi](http://www.restek.com/ovi)  
for a complete product listing.