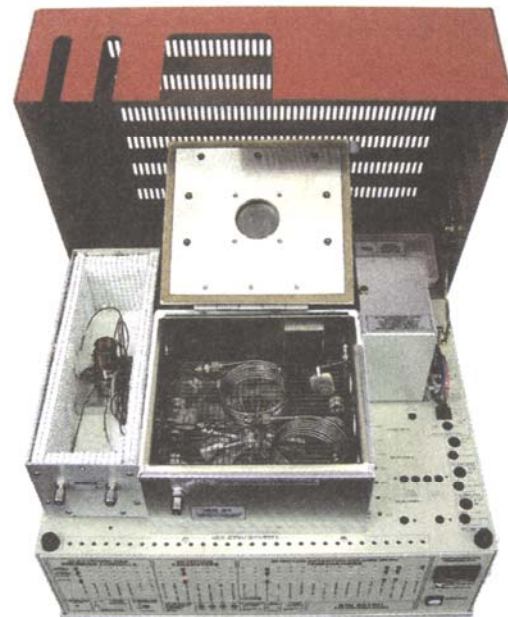


Multiple Gas Analyzer #1 GC System

Separates multiple gases with a single injection
Very tolerant of user adjustments and timing variations
Simpler than other multiple gas capable systems

The basic model includes:

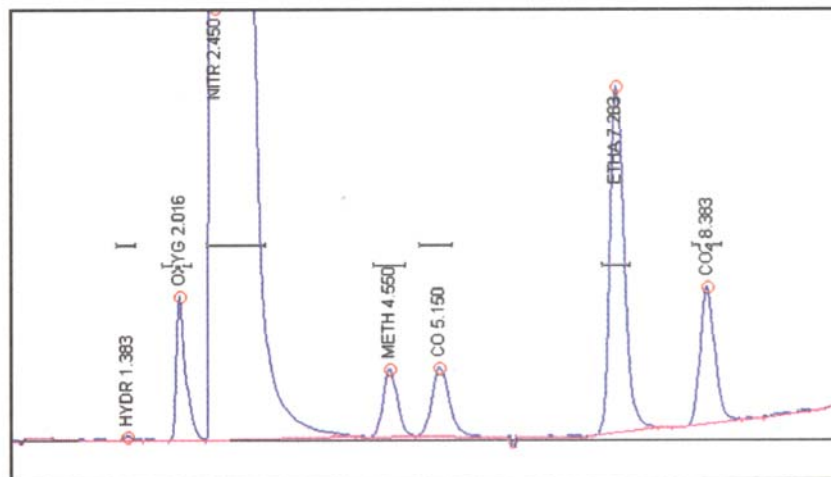
- **TCD Detector**
- **Two Columns - MoleSieve 13X & Silica Gel**
- **10-port Gas Sampling Valve and Loop**
- **1 channel PeakSimple Data System**
...on the compact 8610C chassis



The SRI Multiple Gas Analyzer #1 GC System (MG#1) can separate multiple gases with a single injection. It is preplumbed and ready to resolve H₂, O₂, N₂, Methane, CO, Ethane, CO₂, Ethylene, NO_x, Acetylene, Propane, Butanes, Pentanes and C₆-C₈. The MG#1 is very tolerant of user adjustments and timing variations because it is simpler than other multi-gas capable systems. Unlike complicated and timing-critical gas analysis configurations with three or four columns and three or four valves, the SRI Multiple Gas Analyzer uses a single 10-port gas sampling valve and two packed columns: a 2 meter Molecular Sieve 13X and a 2 meter Silica Gel.

The basic Multiple Gas Analyzer #1 is equipped with a TCD detector for detection limits in the 200-500ppm range. The second option is a TCD-Methanizer-FID configuration, which provides 5ppm detection limits for CO, CO₂ and all hydrocarbons. The third option is a TCD-HID detector combination for detection limits in the 10ppm range for all analytes.

This chromatogram shows the separation of a 1% Gas Mix + 2% ethane sample on a basic TCD equipped MG#1.

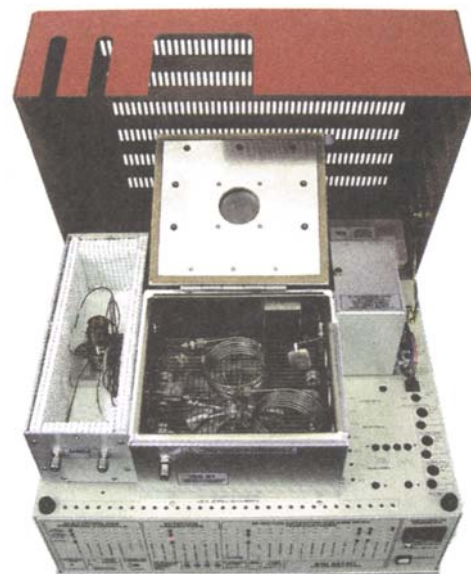


Multiple Gas Analyzer #1 GC System

- *Separates multiple gases with a single injection*
- *Very tolerant of user adjustments and timing variations*
- *Simpler than other multiple gas capable systems*

The basic model includes:

- *TCD Detector*
- *Two Columns - MoleSieve 13X & Silica Gel*
- *10-port Gas Sampling Valve and Loop*
- *1 channel PeakSimple Data System*
- *...on the compact 8610C chassis*



The SRI Multiple Gas Analyzer #1 GC System (MG#1) can separate multiple gases with a single injection. It is preplumbed and ready to resolve H₂, O₂, N₂, Methane, CO, Ethane, CO₂, Ethylene, NO_x, Acetylene, Propane, Butanes, Pentanes and C₆-C₈. The MG#1 is very tolerant of user adjustments and timing variations because it is simpler than other multi-gas capable systems. Unlike complicated and timing-critical gas analysis configurations with three or four columns and three or four valves, the SRI Multiple Gas Analyzer uses a single 10-port gas sampling valve and two packed columns: a 2 meter Molecular Sieve 13X and a 2 meter Silica Gel.

The basic Multiple Gas Analyzer #1 is equipped with a TCD detector for detection limits in the 200-500ppm range. The second option is a TCD-Methanizer-FID configuration, which provides 5ppm detection limits for CO, CO₂ and all hydrocarbons. The third option is a TCD-HID detector combination for detection limits in the 10ppm range for all analytes.

This chromatogram shows the separation of a 1% Gas Mix + 2% ethane sample on a basic TCD equipped MG#1.

