

Narrow Bore Capillary FID GC System



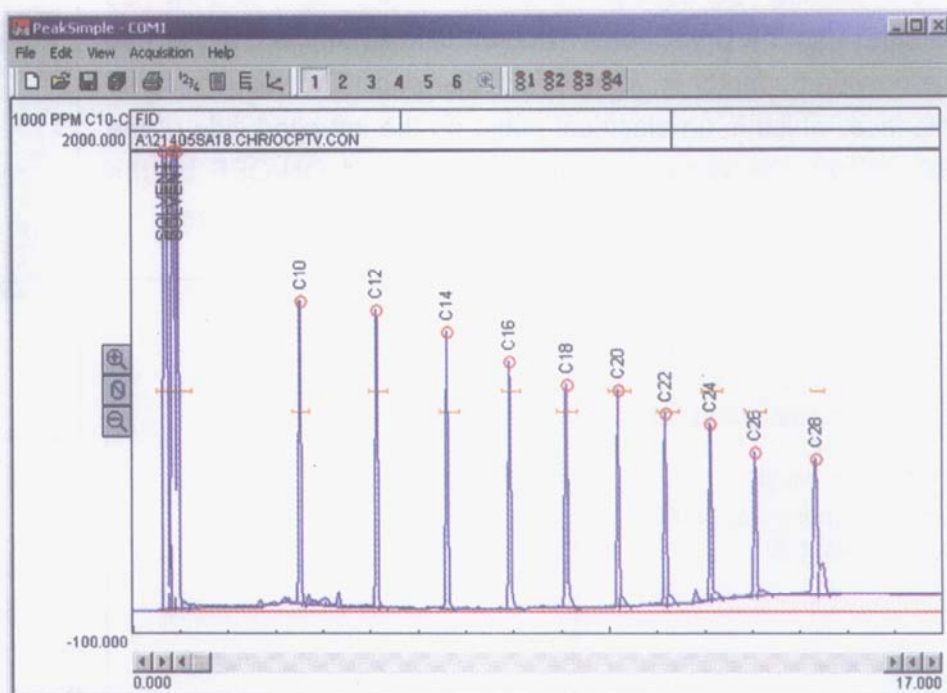
- *FID Detector*
- *On-Column PTV Injector*
- *30 meter Narrow Bore (0.25mm ID) Capillary Column*
- *Built-in, "whisper quiet" Air Compressor*
- *1 Channel PeakSimple Data System*
- *...on the compact 8610C chassis*

The Narrow Bore Capillary FID GC System includes everything you need for ultra high performance narrow bore capillary chromatography. In addition to a wide range of general gas chromatography applications, the Narrow Bore Capillary FID GC System is excellent for environmental testing and quality control applications.

The On-Column Programmable Temperature Vaporization (OCPTV) injector allows larger and simpler liquid injections than are otherwise possible with narrow bore columns. Like a traditional heated Split/Splitless injector, the OCPTV has a split vent and needle valve for venting solvent while concentrating sample. Unlike a heated Split/Splitless injector, the OCPTV vents the solvent without rapid vaporization. Carrier gas flow is programmable from the PeakSimple data system.

The OCPTV discriminates in favor of semivolatile analytes with boiling points higher than C_8 . The chromatogram at right shows an analysis of diesel range organics (C_{10} - C_{28}). The OCPTV causes the analytes to focus on the analytical column, resulting in sharp, well-defined peaks.

Traditional split injectors can usually only handle 1-2 μL injections. The OCPTV's ability to accommodate larger (1-20 μL) injections allows for detection limits an order of magnitude lower. For more information on the OCPTV, see page 59.



8610-5405 Narrow Bore Capillary FID GC System



OPTIONS & UPGRADES: additional detectors with 4 channel serial or 6 channel USB PeakSimple data system, Methanizer, gas sampling valves, additional column(s), H_2 -50XR hydrogen generator, autosampler.
(VOLTAGE: for 110VAC, use 8610-5405-1; for 220VAC, use 8610-5405-2)