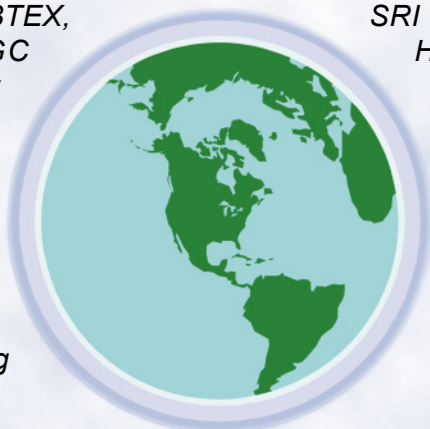




Environmental Testing Solutions from SRI

Time tested field favorites, our BTEX, Environmental, and TO-14 GC systems come completely equipped.

The unique SRI Purge & Trap design features dual traps with different adsorbents and independent temperature setpoints to optimize the trapping and releasing of analytes.



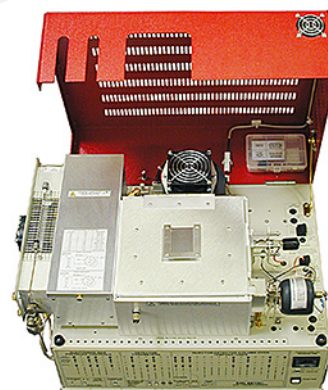
SRI Purge & Trap concentrators and Heated Static Headspace injectors are built into the GC to reduce dead volume for better peak shape.

All SRI GC systems are portable, with a built-in, Windows compatible PeakSimple data system for onsite field analysis or laboratory testing.

Over 1000 possible custom configurations—name your application!

BTEX, Environmental and TO-14 GC systems

The BTEX GC system comes complete with FID and PID detectors and a built-in, Method 5030 compliant Purge & Trap concentrator. The Environmental GC system is identical to the BTEX, except that it features a combination FID/DELCD detector. Both systems may be upgraded to the Method 5030/5035 compliant Purge & Trap concentrator which features interchangeable purge heads and a syringe port. Also equipped with PID and FID/DELCD detectors, the TO-14 Air Monitoring GC uses a dual trap concentrator similar to the purge and trap, and a PeakSimple controlled vacuum pump interface for drawing ambient air samples through the GC. All three units are equipped with a built-in, "whisper quiet" air compressor, and may be used with a hydrogen generator for tankless field operation.

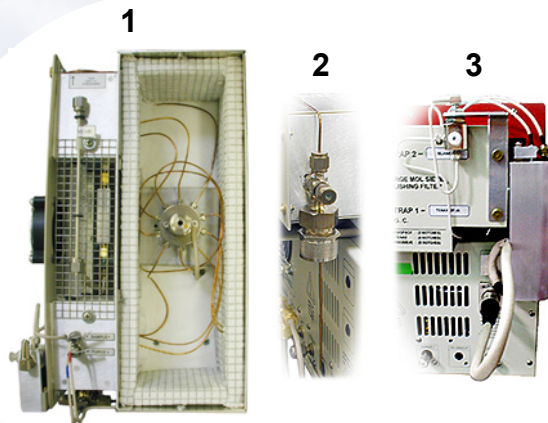


Heated Static Headspace Injector

The Heated Static Headspace Injector is ideal for complex or dirty samples, and for minimizing sample preparation time. The mechanically agitated VOA vial heater body is thermostatted from ambient to 90°C.

Purge & Trap Concentrator

- 1 The SRI built-in Purge & Trap Injector is EPA Method 5030 and/or 5035 compliant with single or dual traps and a heated 10 port gas sampling valve.
- 2 The Method 5030 purge head is designed for the ambient purging of aqueous samples using disposable test tubes.
- 3 The Method 5030 / 5035 Purge & Trap features a syringe port and interchangeable purge heads. The 5035 purge head shown here is heated (ambient-45°C) and mechanically agitated under control of the PeakSimple data system.

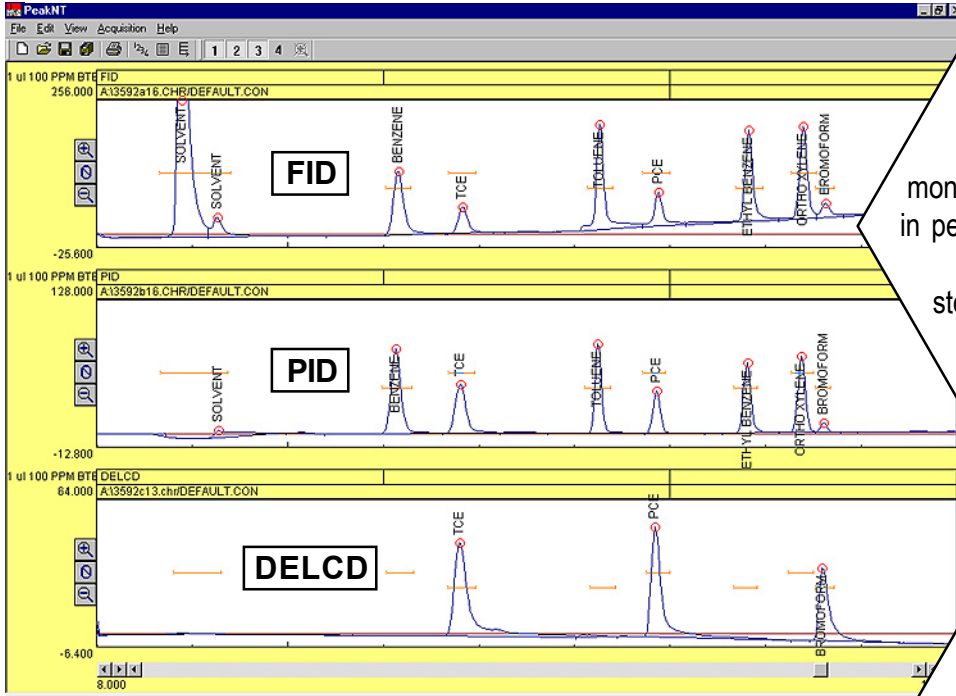


AIR

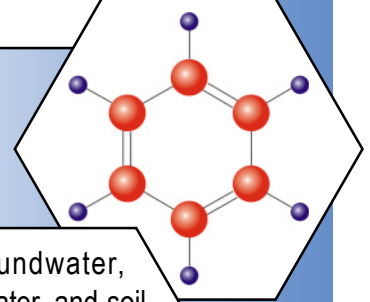
SOIL

WATER

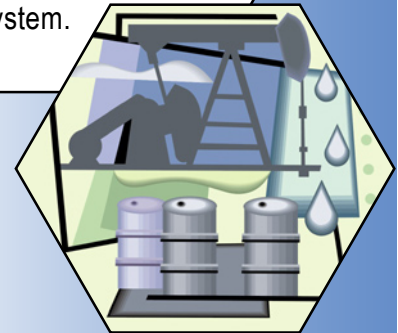
Environmental Testing Solutions from SRI



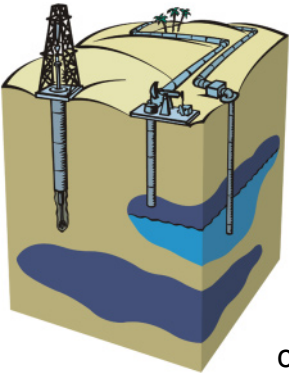
The BTEX chemicals (Benzene, Toluene, Ethylbenzene, and Xylenes) are volatile monoaromatic hydrocarbons found in petroleum products like gasoline. Due to industrial spills and storage tank leakage, they are common environmental pollutants.



Groundwater, wastewater, and soil are tested for BTEX chemicals in many everyday situations. This chromatogram was obtained using an SRI Environmental GC system.



There is more to industry than meets the eye. Not only are there constant technological advances and improvements, but we are learning more and more each day about the long term effects and consequences of chemicals in the environment. To keep abreast of testing requirements for environmental regulations has long been an important goal at SRI Instruments. Like the other areas of chemical analysis that we service, we strive to provide unique, portable, and economical solutions for your environmental testing needs.



Popular Systems

- 8610-0050 BTEX GC with PID and FID detectors, Method 5030 compliant Purge & Trap, built-in air compressor, and 60m capillary column
- 8610-0059 Environmental GC with PID and FID/DELCD detectors, Method 5030 compliant Purge & Trap, built-in air compressor and 60m capillary column
- 8610-0114 TO-14 Air Monitoring GC with PID and FID/DELCD detectors, dual trap sample concentrator, air compressor, vacuum pump interface and 60m capillary column
- 8610-0050 Heated Headspace GC with Heated Static Headspace Injector, FID detector, built-in air compressor, and 30m capillary column

Upgrades and Options

- 8690-5052 Upgrade the Environmental GC or BTEX GC to Method 5030/5035 compliant Purge & Trap concentrator
- 8680-0350 H₂-50 Hydrogen Generator
- 8690-0072 Optional Vacuum Pump Interface (specify 120 or 220 VAC)