



## Low Pressure

### Valves with 1/16" Valco ZDV fittings, 0.75 mm ports (.030")

Model C22Z

**Low pressure**  
**10-32 ZDV**  
**1/16" 0.75 mm**

Includes Valco ZDV PEEK nuts and ferrules.

Standard electric actuator:  
 110 VAC for USA  
 110/230 VAC to 24 VDC power supply for international.  
 Microelectric actuator:  
 24 VDC, with 110/230 VAC to 24 VDC power supply.

Sample loops are not included with valves. Order separately.

**SPECS**  
**100 psi gas/ 250 psi liq**  
**75°C max**  
 PPS stator  
 Valcon E2 rotor



**4 Port**



**6 Port**



**8 Port**



**10 Port**

	Prod No	Price	Prod No	Price	Prod No	Price	Prod No	Price
Manual	C22Z-3184		C22Z-3186		C22Z-3188		C22Z-3180	
With pneumatic actuator	C22Z-3184A		C22Z-3186A		C22Z-3188A		C22Z-3180A	
With standard electric actuator	C22Z-3184E		C22Z-3186E		C22Z-3188E		C22Z-3180E	
With microelectric actuator	C22Z-3184EH		C22Z-3186EH		C22Z-3188EH		C22Z-3180EH	
Replacement valve	C22Z-3184D		C22Z-3186D		C22Z-3188D		C22Z-3180D	
Replacement rotor	C12-314		C12-316		C12-318		C12-310	
Replacement stator	C22Z-384		C22Z-386		C22Z-388		C22Z-380	

#### OPTIONS

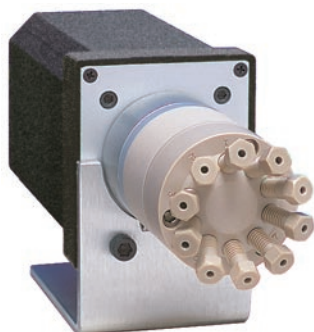
- Purge option
- Other polymeric rotors and stators are available.

Consult the factory for prices and information.

#### PURGE OPTION

The purge option permits a flow of liquid or gas to flush the valve interior of potentially toxic or corrosive components. We recommend this option for applications using materials (such as salt solutions) that could damage the metal parts of the valve.

Consult our technical staff for details.



**Model C22Z**  
**1/16" ZDV fittings**

### Sample loops

for Model C22Z



Loops include PEEK nuts and ferrules. Loops smaller than 500 µl are made from 1/16" OD tubing; loops 500 µl or bigger are made from 1/8" OD tubing with polymeric unions and 1/16" ends.





Volume	FEP		PTFE		PEEK	
	Prod No	Price	Prod No	Price	Prod No	Price
5 µl	CZSL5FEP		CZSL5TF		CZSL5PK	
10 µl	CZSL10FEP		CZSL10TF		CZSL10PK	
20 µl	CZSL20FEP		CZSL20TF		CZSL20PK	
50 µl	CZSL50FEP		CZSL50TF		CZSL50PK	
100 µl	CZSL100FEP		CZSL100TF		CZSL100PK	
250 µl	CZSL250FEP		CZSL250TF		CZSL250PK	
500 µl	CZSL500FEP		CZSL500TF		CZSL500PK	
1 ml	CZSL1KFEP		CZSL1KTF		CZSL1KPK	
2 ml	CZSL2KFEP		CZSL2KTF		CZSL2KPK	

#### MORE INFORMATION

- Actuators  
 Air ..... page 195  
 Microelectric .. 188-189  
 Standard electric ... 193  
 Materials  
 Metals..... 254-255  
 Polymers ..... 256  
 Valve rotors..... 257  
 Standoff  
 assemblies .... 205-207

### Valves with 1/4-28 fitting details for 1/16" tubing, 0.75 mm ports (.030")

Model C22

<b>SPECS</b> 100 psi gas/ 250 psi liq 75°C max PPS stator Valcon E2 rotor	Includes multicolored Cheminert 1/4-28 flangeless fittings for 1/16" tubing.	Standard electric actuator: 110 VAC for USA 110/230 VAC to 24 VDC power supply for international.  Microelectric actuator: 24 VDC, with 110/230 VAC to 24 VDC power supply.	Sample loops are not included with valves. Order separately.	<b>Low pressure</b>	
				<b>1/4-28 Internal</b>	
				<b>1/16" 0.75 mm</b>	
					
		<b>4 Port</b>		<b>6 Port</b>	
		Prod No	Price	Prod No	Price
Manual		C22-3184		C22-3186	
With pneumatic actuator		C22-3184A		C22-3186A	
With standard electric actuator		C22-3184E		C22-3186E	
With microelectric actuator		C22-3184EH		C22-3186EH	
Replacement valve		C22-3184D		C22-3186D	
Replacement rotor		C22-314		C22-316	
Replacement stator		C22-384		C22-386	
					
		<b>8 Port</b>		<b>10 Port</b>	
		Prod No	Price	Prod No	Price
Manual		C22-3188		C22-3180	
With pneumatic actuator		C22-3188A		C22-3180A	
With standard electric actuator		C22-3188E		C22-3180E	
With microelectric actuator		C22-3188EH		C22-3180EH	
Replacement valve		C22-3188D		C22-3180D	
Replacement rotor		C22-318		C22-310	
Replacement stator		C22-388		C22-380	

### Valves with 1/4-28 fitting details for 1/8" tubing, 1.50 mm ports (.060")

Model

<b>SPECS</b> 100 psi gas/ 250 psi liq 75°C max PPS stator Valcon E2 rotor	Includes multicolored Cheminert 1/4-28 flangeless fittings for 1/8" tubing.	Standard electric actuator: 110 VAC for USA 110/230 VAC to 24 VDC power supply for international.  Microelectric actuator: 24 VDC, with 110/230 VAC to 24 VDC power supply.	Sample loops are not included with valves. Order separately.	<b>Low pressure</b>	
				<b>1/4-28 Internal</b>	
				<b>1/8" 1.50 mm</b>	
		<b>4 Port</b>		<b>6 Port</b>	
		Prod No	Price	Prod No	Price
Manual		C22-6184		C22-6186	
With pneumatic actuator		C22-6184A		C22-6186A	
With standard electric actuator		C22-6184E		C22-6186E	
With microelectric actuator		C22-6184EH		C22-6186EH	
Replacement valve		C22-6184D		C22-6186D	
Replacement rotor		C22-614		C22-616	
Replacement stator		C22-684		C22-686	
		<b>8 Port</b>		<b>10 Port</b>	
		Prod No	Price	Prod No	Price
Manual		C22-6188		C22-6180	
With pneumatic actuator		C22-6188A		C22-6180A	
With standard electric actuator		C22-6188E		C22-6180E	
With microelectric actuator		C22-6188EH		C22-6180EH	
Replacement valve		C22-6188D		C22-6180D	
Replacement rotor		C22-618		C22-610	
Replacement stator		C22-688		C22-680	

### Sample loops

for Model C22

Loops include flangeless fittings with white color nuts. Loops smaller than 500 µl are made from 1/16" OD tubing; loops 500 µl or bigger are made from 1/8" OD tubing.

Volume	FEP		PTFE		PEEK	
	Prod No	Price	Prod No	Price	Prod No	Price
20 µl	CFSL20FEP		CFSL20TF	\$17.50	CFSL20PK	
50 µl	CFSL50FEP		CFSL50TF		CFSL50PK	
100 µl	CFSL100FEP		CFSL100TF		CFSL100PK	
250 µl	CFSL250FEP		CFSL250TF		CFSL250PK	
500 µl	CFSL500FEP		CFSL500TF		CFSL500PK	
1 ml	CFSL1KFEP		CFSL1KTF		CFSL1KPK	
2 ml	CFSL2KFEP		CFSL2KTF		CFSL2KPK	



Model C22  
1/4-28 fittings



## Low Pressure

### Internal sample injectors, 1/16" Valco ZDV fittings, 0.40 mm ports (.016")

Model C24Z

- Low pressure
- Internal sample
- 10-32 ZDV
- 1/16" 0.40 mm



Includes Valco ZDV PEEK nuts and ferrules.

Standard electric actuator:  
110 VAC for USA  
110/230 VAC to 24 VDC power supply for international.

Microelectric actuator:  
24 VDC, with 110/230 VAC to 24 VDC power supply.

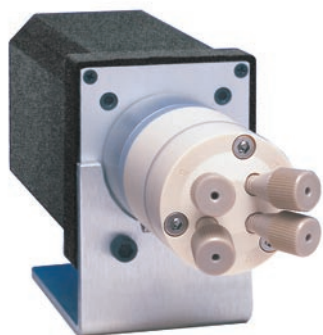
#### SPECS

**100 psi gas/ 250 psi liq**  
**75°C max**  
PPS stator  
Valcon E2 rotor

Sample volume	0.2 µl		0.5 µl		1 µl	
	Prod No	Price	Prod No	Price	Prod No	Price
Manual	C24Z-2184-.2		C24Z-2184-.5		C24Z-2184-1	
With pneumatic actuator	C24Z-2184-.2A		C24Z-2184-.5A		C24Z-2184-1A	
With standard electric actuator	C24Z-2184-.2E		C24Z-2184-.5E		C24Z-2184-1E	
With microelectric actuator	C24Z-2184-.2EH		C24Z-2184-.5EH		C24Z-2184-1EH	
Replacement valve	C24Z-2184-.2D		C24Z-2184-.5D		C24Z-2184-1D	
Replacement rotor	C24-10R-.2		C24-10R-.5		C24-10R-1	
Replacement stator	C24Z-1C8		C24Z-1C8		C24Z-1C8	

#### OPTIONS

- 2.0 µl sample volumes are also available.
- Purge option. *See more information below.*
- Other polymeric rotors and stators are available. Consult the factory for prices and information.



**Model C24Z**  
1/16" ZDV fittings

#### PURGE OPTION

The purge option permits a flow of liquid or gas to flush the valve interior of potentially toxic or corrosive components. We recommend this option for applications using materials (such as salt solutions) that could damage the metal parts of the valve.

Consult our technical staff for details.

#### MORE INFORMATION

Actuators	
.....	page 195
Microelectric ..	188-189
Standard electric ...	193
Materials	
.....	254-255
.....	256
Metals	.....
Polymers	257
Standoff	
Valve rotors....	205-207
assemblies	

### Internal sample injectors, 1/4-28 for 1/16" tubing, 0.50 mm ports (.020")

Model C24

**SPECS**  
 100 psi gas/ 250 psi liq  
 75°C max  
 PPS stator  
 Valcon E2 rotor

Includes multicolored Cheminert 1/4-28 flangeless fittings for 1/16" tubing.

Standard electric actuator:  
 110 VAC for USA  
 110/230 VAC to 24 VDC power supply for international.  
 Microelectric actuator:  
 24 VDC, with 110/230 VAC to 24 VDC power supply.



Low pressure

Internal sample

1/4-28 Internal

1/16" 0.50 mm

#### OPTIONS

- 0.2 µl sample volumes are also available.
- Purge option
- Other polymeric rotors and stators are available. Consult the factory for prices and information.

Sample volume	0.5 µl		1 µl		2 µl	
	Prod No	Price	Prod No	Price	Prod No	Price
Manual	C24-2184-.5		C24-2184-1		C24-2184-2	
With pneumatic actuator	C24-2184-.5A		C24-2184-1A		C24-2184-2A	
With standard electric actuator	C24-2184-.5E		C24-2184-1E		C24-2184-2E	
With microelectric actuator	C24-2184-.5EH		C24-2184-1EH		C24-2184-2EH	
Replacement valve	C24-2184-.5D		C24-2184-1D		C24-2184-2D	
Replacement rotor	C24-10R-.5		C24-10R-1		C24-10R-2	
Replacement stator	C24-1C8		C24-1C8		C24-1C8	



Model C24  
 1/4-28 fittings