

Low Pressure

Valves with 1/16" Valco ZDV fittings, 0.75 mm ports (.030")

Model C22Z

Low pressure
10-32 ZDV
1/16" 0.75 mm

Includes Valco ZDV PEEK nuts and ferrules.

Standard electric actuator:
 110 VAC for USA
 110/230 VAC to 24 VDC power supply for international.
 Microelectric actuator:
 24 VDC, with 110/230 VAC to 24 VDC power supply.

Sample loops are not included with valves. Order separately.

SPECS
100 psi gas/ 250 psi liq
75°C max
 PPS stator
 Valcon E2 rotor



4 Port



6 Port



8 Port



10 Port

	Prod No	Price	Prod No	Price	Prod No	Price	Prod No	Price
Manual	C22Z-3184		C22Z-3186		C22Z-3188		C22Z-3180	
With pneumatic actuator	C22Z-3184A		C22Z-3186A		C22Z-3188A		C22Z-3180A	
With standard electric actuator	C22Z-3184E		C22Z-3186E		C22Z-3188E		C22Z-3180E	
With microelectric actuator	C22Z-3184EH		C22Z-3186EH		C22Z-3188EH		C22Z-3180EH	
Replacement valve	C22Z-3184D		C22Z-3186D		C22Z-3188D		C22Z-3180D	
Replacement rotor	C12-314		C12-316		C12-318		C12-310	
Replacement stator	C22Z-384		C22Z-386		C22Z-388		C22Z-380	

OPTIONS

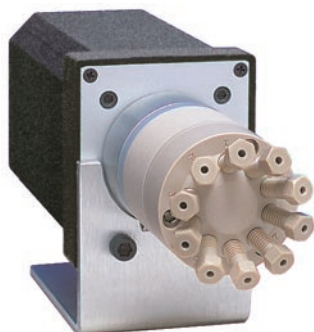
- Purge option
- Other polymeric rotors and stators are available.

Consult the factory for prices and information.

PURGE OPTION

The purge option permits a flow of liquid or gas to flush the valve interior of potentially toxic or corrosive components. We recommend this option for applications using materials (such as salt solutions) that could damage the metal parts of the valve.

Consult our technical staff for details.



Model C22Z
1/16" ZDV fittings

Sample loops for Model C22Z



Loops include PEEK nuts and ferrules. Loops smaller than 500 µl are made from 1/16" OD tubing; loops 500 µl or bigger are made from 1/8" OD tubing with polymeric unions and 1/16" ends.

Volume	FEP		PTFE		PEEK	
	Prod No	Price	Prod No	Price	Prod No	Price
5 µl	CZSL5FEP		CZSL5TF		CZSL5PK	
10 µl	CZSL10FEP		CZSL10TF		CZSL10PK	
20 µl	CZSL20FEP		CZSL20TF		CZSL20PK	
50 µl	CZSL50FEP		CZSL50TF		CZSL50PK	
100 µl	CZSL100FEP		CZSL100TF		CZSL100PK	
250 µl	CZSL250FEP		CZSL250TF		CZSL250PK	
500 µl	CZSL500FEP		CZSL500TF		CZSL500PK	
1 ml	CZSL1KFEP		CZSL1KTF		CZSL1KPK	
2 ml	CZSL2KFEP		CZSL2KTF		CZSL2KPK	

MORE INFORMATION

- Actuators
 - Air page 195
 - Microelectric .. 188-189
 - Standard electric ... 193
- Materials
 - Metals..... 254-255
 - Polymers 256
 - Valve rotors..... 257
- Standoff assemblies 205-207