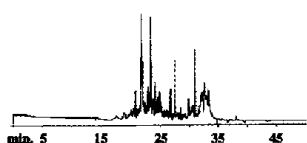


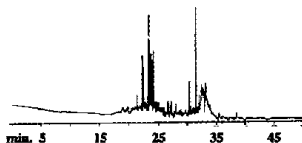


Figure 2
 ECD BLEED – Even a highly sensitive ECD can't make Restek's Thermolite™ or RedLite™ look bad!

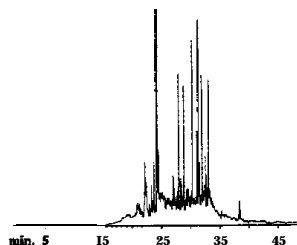
Restek Thermolite™
 (Lot# 178)



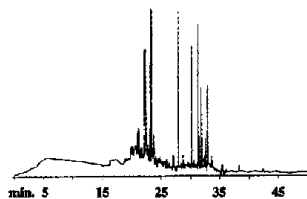
SeptaRestek RedLite™
 (Lot # 149)



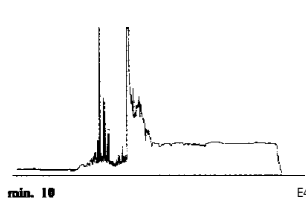
SeptaBaxter septa 77
 Lot# 0081)



Supelco Thermogreen™ LB-2
 [Lot#781-021c)



Chromacol Chromseal™
 9001 HT Septa



15m, 0.53mm ID, 1.0um
 Rtx™-5 (cat.# 10252)
Oven temp.: 40°C (hold
 15 min.) to 300°C @
 15°C/min. (hold 40 min.),
Inj./det. temp.: 250°C/
 300% **Carrier gas:**
 helium, **Linear velocity:**
 40cm/sec., **Splitless hold**
time: 15 min., **Split vent:**
 40 ml/min., **Septum**
purge: 3.5 ml/min., **ECD**
range: 5

Testing Parameters for Comparison Studies:

A clean, deactivated 4mm ID gooseneck splitless sleeve was placed into the GC inlet. A blank run was made to confirm system cleanliness. After verifying system cleanliness, a sample unconditioned septa was cored from the centerface of each septum and cut in half. Using clean forceps, the two pieces were inserted into the clean, conditioned splitless sleeve. The sleeve was placed into the inlet (approximately 30 to 40°C) of a HP 589011 GC. The system was thoroughly leak-checked using an electronic leak detector. Next, the injection port was heated to 250°C while the GC oven was held at 40°C. After 15 minutes at 40°C, the oven was programmed to 300°C @ 15°C/minute to elute the bleed volatiles that had accumulated on the head of the column. After the 15-minute initial hold, the inlet system was cooled to prevent additional accumulation of septum bleed in the inlet sleeve. At the end of each run, the septum was removed from the sleeve and a blank run was performed to verify system cleanliness and prevent cross-contamination. This is the standard quality assurance testing procedure used by Restek for Thermolite™ and RedLite™ septa.

Septa Product Listing

Size	Thermolite®	RedLite®
9.5mm 11mm	25pack	25- pack
	20359	22300
	20363	22306
9.5mm 11mm	50- pack	50- pack
	20360	22301
	20364	22307
9.5mm 11mm	100- pack	100- pack
	20361	22302
	20365	22308



**To reduce the risk of GC downtime,
 request Restek's Guide to
 Minimizing Septa Problems.**

Othersizes are available.
 Call your local distributor for a complete listing.